

# INFRASTRUCTURE

**EV Charging Stations/  
Utilities/  
Energy/  
Agriculture/  
Oil & Gas/  
Mining**

WELCOM TO WINMATE



Start to charging

**RUGGED AND MOBILE DEVICE TO  
STREAMLINE FIELD WORKERS  
EFFICIENCY**

**Q1 - 2023**

# About Winmate

Founded in 1996, Winmate Inc. is a pioneer in rugged computing technology. Winmate has provided business leaders worldwide with reliable, robust solutions for the most challenging industrial conditions for over two decades. From R&D to manufacturing to in-house testing, Winmate Inc. manages the entire product development process with ready-made products available for quick deployment. Today Winmate's innovative approach has helped countless enterprises at every level with equipment automation and seamless Industrial Internet of Things (IIoT) integration.

From the industrial display, panel PC, HMI, embedded systems to rugged mobile devices, Winmate caters to industries ranging from transportation and logistics to marine and military, railway, oil, and gas, and provides customization services to create a unique solution for specific customer requirements.

## The Winmate Difference

### Innovation and Ruggedness

With innovation and ruggedness, our products are designed to meet the requirements of vertical markets' environmental standards.

### Engineering Intelligence

We are committed to maintaining the highest standards in engineering excellence to ensure our products deliver reliability, durability, and optimized performance.

### Quality Commitment

Quality assurance and entire engineering processes are conducted in-house. It is why we invested significantly in our state-of-the-art testing facility with additional global support.

“  
**INNOVATIVE  
TECHNOLOGY FOR  
OPERATIONAL  
EXCELLENCE.**  
”

### Efficiency

Our team is committed to efficiency and maintaining the shortest possible development cycles. The whole development process is conducted in-house to achieve the market advantage in speed and quality from design to testing.

### Reliability

Reliability, service, and support are part of our foundation. Every product scrutinizes industrial standards testing to verify electrical, mechanical, thermal, and firmware design performance.

# Customized Solutions

Years of experience allow Winmate to offer customized solutions for different applications.

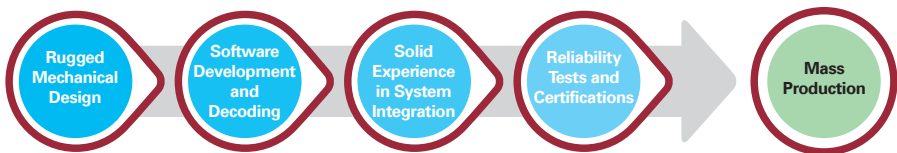
From product design to accessories, our engineering team designs and support the system integration process.

- CUSTOMIZED CONFIGURATION
- CUSTOM OS IMAGE
- CUSTOM BIOS
- ENCLOSURE DESIGN
- PERIPHERALS AND OPTIONS
- CUSTOM-DESIGNED ACCESSORIES

## Technical Know-How

We understand that access to cutting-edge solutions purposely built for their applications is imperative for enterprises operating in rugged or potentially hazardous environments. As a result, Winmate locates its resources from project research and design, software development and customization, product verification and validation, and in-house testing to research and implement the latest technologies available.

**The latest technologies we deploy for our rugged products:**



- Dry and wet optical bonding
- Panel enhancement for sunlight readability
- Anti-reflection (AR) and anti-glare (AG) glass protection coating
- Light sensor
- Hyper dimming
- Electronic potting
- Touch screen integration: projected capacitive, resistive, or SAW touch
- Waterproof enclosure
- Military EMI and mesh coating
- Wireless capabilities
- Data capture devices integration
- Defroster for ultra-low temperature environments
- Stainless steel SUS 316/ AISI 316
- Shock and vibration resistance
- Wide-range operation temperature

# Field Service Solutions

## Overview

Field service workers face various challenges working in remote locations and unfamiliar environments, and every minute of downtime results in lost revenue. Access to critical information and wireless communications are top priorities for workers to provide fast service. Winmate provides rugged mobile solutions capable of increasing productivity in the field.

Our rugged mobile solutions are built to withstand the rigors of the harshest environments and are designed to improve the efficiency and productivity of field workers. Durable portable computers allow workers to access information anytime, no matter where the task brings them. Wireless connectivity, data collection, and data transfer features allow workers to keep in touch with the operations control all day long.

### **Our rugged mobile computers include:**

- The latest Android™ or Windows® operating system
- Advanced data collection options
- Durable design

Winate's rugged mobile computers are built to last, reducing the total cost of ownership over time. Retailers, manufacturers, logistics companies, and field service organizations all choose Winmate mobile computers every day to improve daily operations.

## Technology

Winmate offers Android and Windows-based rugged mobile computers with additional application-focused features such as barcode scanners, RFID, and NFC readers. All the devices are solid, waterproof, and drop resistant.

### **Application-focused features:**

- Built-in barcode, RFID, fingerprint scanners
- Wireless connectivity 3G/ 4G LTE, WLAN, BT, GPS
- Waterproof and dustproof enclosure
- Shock, drop, and vibration resistance

# Electric Vehicle Charging Stations

## Overview

Electric car sales reached a record 3 million in 2020, up 40% from 2019. This strong growth was a stark contrast to general car market sluggishness globally, with overall car sales down 16% due to the COVID-19 crisis. After a decade of rapid growth, there are now over 10 million electric cars on the road, representing ~1% of the global car stock. For 2030, the Net Zero Emissions by 2050 Scenario projects 300 million electric cars on the road and they account for over 60% of new car sales, compared with only 4.6% in 2020.

### **Winmate has technology know-how for the production and development of explosion-proof devices:**

- Strong vibration
- Operating in cold environments
- Unstable power supply
- Wireless communications
- Extreme operating environment

Winmate, a rugged computing and embedded solutions provider for industries operating in some of the most challenging environments, is extending the portfolio of its proven industrial HMI panel PC series. Winmate's industrial Panel PCs featuring a new Gen. Intel® processor are now available as GC Series for use in heavy-duty industrial environments, as PO Series for embedded kiosks, and as Standard Industrial Panel PC (Chassis/ Open Frame/ Front IP65 / Panel Mount) for various industrial application scenarios. All new versions are available immediately.

## Technology

Winmate continues pursuing excellence and innovation in system design. To fulfill the diverse needs of customers and the EV market demand, Winmate partners with leading EV charging solution suppliers to develop IoT-based EV charging solutions with IP65 ratings that are modern, ergonomic, and customizable for outdoor environments. Besides using the high-brightness smart touch computer for a better user experience, the charging pile could fit well with all European, Japanese, and National standard EVs thus supporting precise power supply control and cut-off to avoid damages by accident caused by abnormal weather or grid.

### **Application-focused features:**

- G-WIN GC Series HMI Panel PC
- PO Series HMI Panel PC
- Standard Industrial Panel PC (15" and up)
- Chassis/ Open Frame/ Front IP65 / Panel Mount
- Technical details about the new HMI Panel PCs
- 7KW and 21KW Power Output with IoT-Based EV Charging Solution



**WE DELIVER ENTERPRISE MOBILITY SOLUTIONS  
FOR FIELD SERVICE OPERATIONS.**



---

## **RUGGED TABLETS**

Portable and wireless rugged tablet computers can survive in any environment and get real work done.

---



---

## **VEHICLE-MOUNTED COMPUTERS**

Rugged vehicle-mounted computers for data collection in the warehouse and logistic applications, designed to fit seamlessly into forklifts, trucks, and other vehicles.

---



---

## **G-WIN PANEL PC**

Rugged Panel PC for data collection in the warehouse and logistic applications, designed to fit seamlessly into forklifts, trucks, and other vehicles.

---

# Success Story

## Field Work Inspection



## Background

Inspection systems for industrial fieldwork are essential for safeguarding public areas and industrial operations. With portable digital radiography (DR) technology, field workers can use its X-ray scanning features to evaluate power lines and even preventive maintenance in oil or gas applications. Likewise, accurate DR systems can be used for industrial surveillance and construction site evaluations where a precise panel PC could be the difference between life and death.

## Core Products

Industrial Panel PC

- 13.3" Ultra-Rugged Tablet M133WK Series

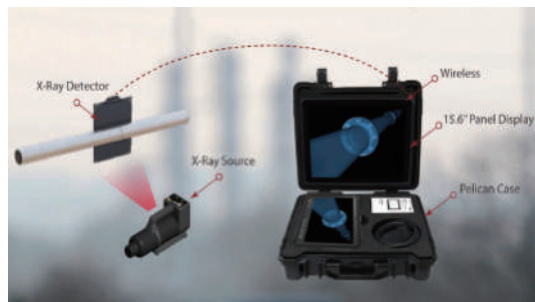
## Main Challenges

- Accurate X-ray inspections in industrial fieldwork
- Exposure to different weather conditions
- Responsive touch screen
- High performance

**“DIGITAL  
RADIOGRAPHY  
FOR EVALUATION  
AND PREVENTIVE  
MAINTENANCE  
IN FIELD SERVICE  
APPLICATIONS.”**

## Why Winmate

- Sunlight readable display with optical bonding technology
- Highly sensitive PCAP touchscreen
- Rugged design, IP65 water and dustproof
- High performance and fanless cooling system



Application Diagram: Portable Digital Radiography



# Application Story

## Industrial Field Work



### Background

Field service workers face various challenges working in remote locations and unfamiliar environments, and every minute of downtime results in lost revenue. Access to critical information and wireless communications is the top priority for workers to provide fast service. Winmate comes with rugged mobile solutions capable of increasing productivity in the field.

### Core Products

- Rugged mobile computer E430 Series, E500 Series
- Rugged tablet M101 Series

### Main Challenges

- Changing weather conditions
- Work in remote locations
- Data collection

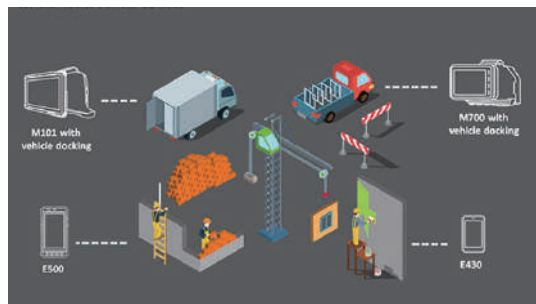
“

**RUGGED MOBILE  
DEVICES TO PERFORM  
INSPECTION,  
UTILITY CONTROL  
AND REAL-TIME  
REPORTING.**

”

### Why Winmate

- Rugged design
- Shock, drop, and vibration resistance
- Wireless communications



Application Diagram: Industrial Field Work



# 5" Handheld Computer E500QK



“

**RUGGED DESIGN  
BUILT TO SURVIVE.**

”

- 5" PCAP touchscreen
- Qualcomm® Snapdragon™ 660 (Octa-core 2.2 GHz)
- Android 9.0

---

3 GB RAM, 32 GB eMMC

---

Support hand/ gloves and rain mode

---

Optical bonding for sunlight viewability

---

8 MP webcam, 13 MP rear camera with autofocus

---

USB 3.0 Type C (OTG)

---

WLAN, BT, GPS, GLONASS, WWAN (Optional)

---

19 keypad include power key

---

Ambient light sensor, E-compass, Gyro, acceleration sensors

---

IP67 waterproof and dustproof

---

MIL-STD-810G shock, vibration and drop resistance

---

## Custom configuration



Docking  
Connector



NFC RFID  
Reader



WWAN

WWAN

## Application



### **Courier Shipping Service**

“COMPACT AND DURABLE  
HANDHELD COMPUTER”

Rugged specifications of the compact E500QK handheld computer mean that personnel can take photos, enter data, and take photos in any harsh environment. The latest

Android operating system offers tremendous potential for developing or adapting mobile computer applications.

## Custom configuration



Barcode  
Reader



NFC RFID  
Reader



WWAN  
WWAN

## Application



### Forklift Solution

“FROM FIXED MOUNTING  
TO PORTABLE SOLUTION”

The compact M700DM8 rugged  
tablet with custom vehicle  
docking delivers a portable and  
robust solution for warehouse  
management and route  
optimization.

# 7" Rugged Android Tablet M700DQ8



**“ COMPACT. DURABLE.  
VIBRATION RESISTANT. ”**

- 7", 1280 x 720, PCAP touchscreen
- Qualcomm® Snapdragon™ 660, Octa-core up to 2.2 GHz
- Android 9.0

---

3 GB RAM, 32 GB eMMC

---

Support hand/ gloves and rain mode

---

Optical bonding for sunlight viewability

---

Ambient light sensor, E-compass, Gyro & acceleration  
sensors

---

8 MP webcam, 13 MP rear camera with autofocus

---

USB 3.0 Type C (OTG)

---

WLAN, BT, GPS, GLONASS

---

NFC (Read / Write, Peer-to-Peer mode) (Optional)

---

550g lightweight portability

---

IP65 waterproof and dustproof

---

MIL-STD-810G shock, vibration and drop resistant

---

# 8" Windows Rugged Tablet M900P/ M900PT



**“ PORTABLE AND  
POWERFUL SOLUTION. ”**

- 8", 1280 x 800, IPS LED
- Intel® Pentium® N4200 (2M Cache, up to 2.5 GHz)
- Windows 10 IoT Enterprise

---

4 GB LPDDR4, 128 GB SSD

---

Light sensor, g-sensor, Gyro

---

2 MP webcam, 8 MP rear camera with autofocus

---

GPS, GLONASS

---

USB 3.0 (Type A), USB 3.0 (Type C)

---

Built-in smart card reader (Default M900PT)

---

IP65 waterproof and dustproof

---

MIL-STD-810G shock, vibration and drop resistance

---

## Custom configuration



Memory



Storage



HF RFID  
Reader



Barcode Reader



WWAN

## Application



### Connected Truck

“CONNECTIVITY FOR  
VEHICLES ON THE ROAD”

Winmate developed a smart truck solution for a heavy-duty vehicle. Installed on a dashboard by vehicle cradle, the 8" rugged tablet M900P and custom designed vehicle gateway VG-100 now connect in-vehicle systems and allow status monitoring of a semi-truck in Europe.

# 10.1" Windows Rugged Tablet M101S

## Custom configuration



## Application



## Delivery Service

**"INSTANTLY ACCESS ORDER INFORMATION"**

The M101S rugged tablet with an LTE module and barcode scanner boosts productivity and speeds up delivery services, giving quick access to order information anywhere you go. The solution includes a vehicle cradle for in-vehicle mounting and charging.



**“ ROBUST TABLET TO WITHSTAND INDUSTRIAL USE. ”**

- 10.1", 1920 x 1200, IPS LED
- Intel® Core™ i5-7200U Kaby Lake 2.5 GHz, up to 3.1GHz
- Intel® Core™ i5-7300U Kaby Lake 2.60 GHz, up to 3.5 GHz (Optional)
- Windows 10 IoT Enterprise

---

4 GB DDR4 SDRAM, 128 GB SSD, micro SDXC card slot

---

Light sensor, g-sensor, Gyro

---

2 MP webcam, 8 MP rear camera with autofocus

---

HF RFID 13.56MHZ and 1D/2D barcode scanner (Optional)

---

USB 3.0 Type-A, USB 3.0 Type-C

---

GPS, GLONASS

---

IP65 waterproof and dustproof

---

MIL-STD-810G shock, vibration and drop resistance

---

Hot-swappable battery design with optional High capacity battery pack

---

# 10.1" Android Rugged Tablet

## S101M9/ L

NEW  
PRODUCT

### Custom configuration



RFID  
Reader



Barcode Reader



WWAN



Battery Hotswap



Micro HDMI Port

### Application



### Industrial Android Durable Tablet

"BRILLIANT DISPLAY WITH  
ULTIMATE TOUCH"

The 10.1" S101 series features projected capacitive (PCAP) multi-touch for the best user experience and allows switching windows, taking snapshots, zooming in, and rotating objects easily to take the full advantages of the touch interface. Supports Rain, Glove, Stylus modes.



**“ ROBUST TABLET TO  
WITHSTAND INDUSTRIAL USE. ”**

- 10.1", 1280 x 800 TFT LCD Display (S101M9L)
- 10.1", 1920 x 1200 TFT LCD Display (S101M9)
- Android 11.0
- ARM A73 x 4 (2.0 GHz) + A53 x 4 (2.0 GHz)

---

Integrated 1D/2D barcode reader (Optional)

---

---

Integrated NFC module (Optional)

---

---

8.0 MP camera in front side

---

---

13.0 MP rear camera (with LED auxiliary light, auto focus)

---

---

4 GB RAM + 32 GB eMMC

---

---

Anti-glare touch treatment

---

---

WLAN, BT, GPS, GLONASS, WWAN (Optional)

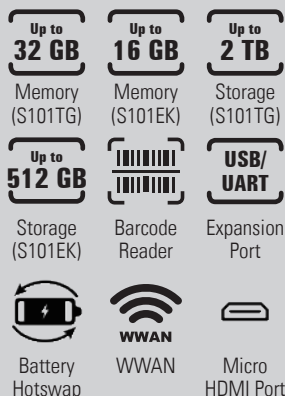
---

---

SOTI MobiControl compliance

---

## Custom configuration



## Application



### Industrial Field Work

“MOBILE DEVICES BUILT TO WITHSTAND THE HASSLE OF INDUSTRIAL USE”

Field workers equipped with modern technologies for remote data collection and communications with back office finish tasks faster and more efficient.

# 10.1" Windows Rugged Tablet S101TG/ S101EK

**NEW  
PRODUCT**



## RUGGED ENOUGH TO WITHSTAND WEAR & TEAR.

- 10.1", 1920 x 1200 WUXGA with PCAP touch
- 11th generation Intel® Tiger Lake processor (S101TG)
- Intel® Elkhart Lake Celeron® N6210 (S101EK)

---

4 GB DDR4, 128 GB SSD, micro SDXC card slot

---

Light sensor/ g-sensor/ Gyro

---

2MP Webcam , 8MP Auto-focus rear camera

---

Anti-glare touch treatment

---

USB 3.0 Type-A, USB 3.0 Type-C, RJ45-10/100/1000 GigaLAN port, Micro SDXC slot, docking connector

---

WLAN, BT, GPS, GLONASS

---

Support hand/ gloves and rain mode

---

MIL-STD-810H shock, vibration, and drop resistance

---

# 10.1" Windows Rugged Tablet

## M101P



“ **OPTIMUM SIZE,  
MAXIMUM PRODUCTIVITY.** „

- 10.1", 1920 x 1200, IPS LED
- Intel® Pentium® N4200 (2M Cache, up to 2.5 GHz)
- Windows 10 IoT Enterprise (Optional),  
Linux Ubuntu 20.04 (Optional)

4 GB LPDDR4, 128 GB SSD, micro SDXC card slot

Light sensor, g-sensor, Gyro

2 MP webcam, 8 MP rear camera with autofocus

Anti-glare touch treatment

USB 3.0 Type-A, USB 3.0 Type-C

WLAN, BT, GPS, GLONASS

IP65 waterproof and dustproof

MIL-STD-810G shock, vibration, and drop resistance

### Custom configuration



Memory



Storage



Barcode  
Reader



WWAN



HF RFID  
Reader



Micro HDMI  
Port



High  
Capacity  
Battery 16hr



Expansion  
Port

### Application



### Substation Field Work

“RUGGED AND MOBILE  
DEVICE TO STREAMLINE  
FIELD WORKERS  
EFFICIENCY”

Field workers in power  
substations usually work outside  
and require mobile devices to  
perform inspection, utility control  
and instant reporting.



## Custom configuration



Memory

Storage

WWAN



GigaLAN  
Port

Barcode  
Reader

HF RFID  
Reader



Micro HDMI  
Port

## Application



### Automotive Manufacturing

"SUITABLE FOR FACTORY  
ENVIRONMENT"

The M116P series rugged tablet features high processing capabilities, wireless connectivity options, and data capture modules for extraordinary performance.

# 11.6" Windows Rugged Tablet M116P



“**BRILLIANT SUNLIGHT  
READABLE SCREEN.**”

- 11.6", 1920 x 1080, LED Panel
- Intel® Pentium® N4200 1.1 GHz, up to 2.5 GHz
- Windows 10 IoT Enterprise (Optional)

---

4 GB LPDDR4, 128 GB SSD

---

Light sensor, g-sensor, Gyro

---

2 MP webcam, 8 MP rear camera with autofocus

---

WLAN, BT, GPS, GLONASS

---

USB 3.0 (Type A), USB 3.0 (Type C)

---

Smart Card Reader (Default M116PT)

---

Kensington lock

---

IP65 waterproof and dustproof

---

MIL-STD-810G shock, vibration, and drop resistance

---

# 11.6" Windows Rugged Tablet M116K



## “HIGH PROCESSING POWER IN A RUGGED ENCLOSURE.”

- 11.6", 1920 x 1080, IPS LED
- Intel® Core™ i5-7200U 2.5 GHz, up to 3.1 GHz
- Intel® Core™ i5-7300U 2.60 GHz, up to 3.5 GHz (Optional)
- Windows 10 IoT Enterprise

---

4 GB DDR4, 128 GB SSD

---

Light sensor, g-sensor, Gyro

---

2 MP webcam, 8 MP rear camera with autofocus

---

Anti-glare touch treatment

---

WLAN, BT, GPS, GLONASS

---

USB 3.0 (Type A), USB 3.0 (Type C)

---

TPM 2.0, Kensington lock

---

IP65 waterproof and dustproof

---

MIL-STD-810G shock, vibration, and drop resistance

---

Sunlight readable screen with an anti-glare solution

---

## Custom configuration



Memory



Storage



WWAN



GigaLAN  
Port



Barcode  
Reader



HF/RFID  
Reader



Micro HDMI  
Port

## Application



### Warehouse Management

“TRUSTWORTHY  
PERFORMANCE  
ACROSS THE LOGISTICS  
ECOSYSTEM”

The M116 series rugged tablet is purpose-built for warehouse, transportation, and field service applications. The M116 series delivers excellent performance, multiple wireless connectivity options, and data capture modules for various enterprise mobility applications. Use it all day, thanks to the hot-swap battery design.

## Custom configuration



Memory



Storage



WWAN

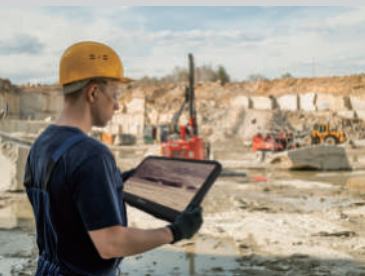


Smart Card  
Reader  
(M140TGT)



HF RFID  
Reader

## Application



## See The Data With Less Scrolling

"USE IT AT EASE  
ANYWHERE AND EVERY  
TIME"

The M140TGT's 14 inch tablet comes with an optional kickstand/hard handle, and mounting choices make it very easy to carry. Rest assured that the device can withstand the impact, shock, vibration, liquid spills, and dust.

# 14" Windows Rugged Tablet M140TGT/ M140TGT

NEW  
PRODUCT



“ **ALWAYS ON INDUSTRIAL  
MOBILE PC.**

”

- 11th Gen. Intel® Processor Family – Tiger Lake Processor
- 14-inch tablet, 1920 x 1080 wide viewing angle LED Panel

---

Optical bonding and anti-glare technology for sunlight readability

---

---

IP65 waterproof and dustproof

---

---

Hot-swappable battery for whole-day work

---

---

Integrated smart card reader

---

---

Operate in temperatures ranging from -20°C to 60°C (when charging) or -10°C to 50°C (on battery)

---

WWW.WINMATE.COM



## **RUGGED ANDROID TABLETS SET A NEW STANDARD FOR FIELD SERVICE WORKERS**

PERFORMANCE IMPROVED.  
FASTER THAN EVER.

# Oil & Gas



## Overview

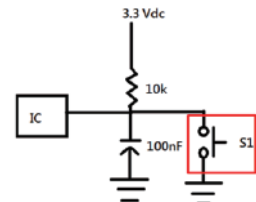
Oil rigs and remote pipeline locations are the most dangerous and challenging work environments anywhere. Winmate rugged computers are designed for the harsh environments of an oil refinery or a drilling rig and come with ATEX Zone 2 and Class 1 Division 2 (C1D2) certifications. By employing automated processes, oil and gas companies can increase production wells, improve production control, and reap the benefits of modern technologies.

## Technology

Winate has technology know-how for the production and development of explosion-proof devices:

### Intrinsic Safety Schematic Design

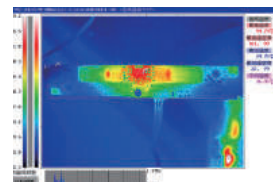
Our engineers design the intrinsic safety schematics for the explosion-proof product line. Our engineers design the electronic system to ensure that the temperature under all fault conditions can never rise to a value that may cause explosive gasses' ignition.



*Intrinsically safe design*

### Non-Sparking Device

Our design guarantees that the ignition of a hazardous atmosphere does not occur. It is achieved by ensuring that only low voltages and currents enter the hazardous area and that no significant energy storage is possible.



*Thermal design*

# Application Story

## Operator Control HMI for Oil Drilling Rig



### Background

In the Oil & Gas industry, complex process control is required at all stages, from exploration, extraction, and transportation, to the refinement and the distribution of fossil fuels. These processes occur in harsh environments with the constant threat of dangerous substances in the air, where combustion can occur when proper precautions are ignored.

### Core products

- ATEX Aluminum Panel PC
- ATEX Stainless Display
- ATEX DIN-Rail Box PC

### Main Challenges

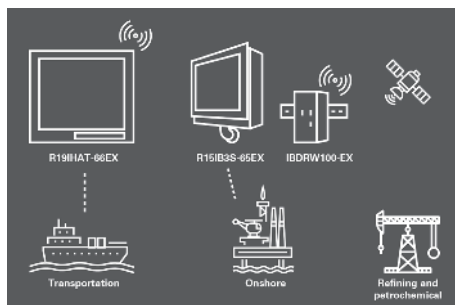
- Hazardous working environment
- Wide operating temperature
- Explosion-proof solution

### Why Winmate

- Certified for C1D2, ATEX Zone 2
- Large, high-brightness display with optical bonding technology
- Wide operating temperature



Winmate's ATEX HMI Panel PC



Application Diagram: Hazardous Locations



# Application Story

## Safe Operation in Hazardous



"With ATEX-Grade Industrial Rugged Panel PCs for Mining, Energy and Utilities Sectors"

## Background

The mining sector entails numerous environmental challenges, off-grid location, dust, etc., that demands only the most rugged industrial Panel PCs available on the marketplace. These rugged industrial Panel PCs should assist various fieldwork-related capacities from numerous safety properties and vital technical applications to smooth-run the operations. At the same time, durable to hold up against the harshest climate conditions like severe temperature from subfreezing to extreme heat malfunctioning.

Mining is also a labor-intensive sector, making a sturdy and reputable touchscreen display is required. The devices used should handle on-site duties, increase and speed up work progress. Top-quality, rugged touchscreen PCs must be water- and dustproof, resistant to shock, vibration, drop, and anti-explosion. These features are essential for protecting the stability of the task at hand and ensuring the safety and security of the fieldworkers.

## Core products

- R19IHAT-66EX - 19" Intel® Core™ i5/i7 ATEX 1000nits Panel PC

## Main Challenges

- Sunlight readability.
- Devices that include external and internal applications to enhance and improve fieldwork.
- Need to withstand extreme weather and environmental conditions.
- Use in the hazardous area.

## Why Winmate

- Certified for Hazardous Locations
- Fully Rugged and Waterproof Design
- Tailor-made for Your Needs



Application Diagram: Mining Sector



# Application Story

## Smart Charging Station Solution



### Background

With countries worldwide introducing mandates to cut the number of diesel and petrol cars, drivers are looking towards the future dominant car technology, i.e., electric vehicles (EVs). Deloitte predicts that over 25.3 million EVs will be sold by 2030. With the rise in EV use, the demand for electric vehicle charging stations is soaring.

Smart electric vehicle charging stations are connected to the Cloud. This allows all users to log in, locate charging stations on a map, reserve specific locations, pay online, check the charging status, and view focused promotions. The dedicated mobile app can be accessed using a smartphone, laptop, tablet, or directly through a touch screen at the charging station.

### Core products

- 7" ATEX grade Android Tablet
- 15" C1D2 Panel PC
- ATEX grade embedded system

### Main Challenges

- Outdoor applications
- Wide Range Communication Capabilities
- Embedded OS support and One-Stop Shopping
- Product longevity

### Why Winmate

- Rugged Design for outdoor applications
- Vast Experiences in hazardous environments
- Specially built for industrial needs
- Product customization supports

**“ SMART OUTDOOR PUBLIC CHARGING STATIONS HMI FOR ELECTRIC VEHICLES. ”**



Application Diagram: EV Charging

# 7" ATEX Rugged Android PDA M700DQ8-EX



“**ATEX ZONE 2 CERTIFICATION.**”

- Qualcomm® Snapdragon™ 660, Octa-core up to 2.2 GHz
- ATEX grade rugged android PDA
- 1280 x 720, TFT Panel with direct optical bonding

---

Supports Android 9.0 OS

---

Sunlight readable android tablet

---

IP65 waterproof and dustproof

---

Rated for extreme temperature use

---

ATEX Zone 2 application certification

---

## Custom configuration



WWAN



NFC RFID  
Reader

## Application



## **Real-Time Data and Wireless Connectivity**

“REAL TIME DATA  
AND WIRELESS  
CONNECTIVITY”

Real-time data access to the right information is crucial for mobile workers. With a host of features that include GPS / AGPS / GLONASS, WLAN, BT, and optional 4G LTE, workers can now share files or communicate with each other anytime and anywhere.

## ATEX DIN Rail Box PC (C1D2)

# IBDRW100-EX/ IBDRW100-EX-P



“

**COMPACT FOR  
HAZARDOUS LOCATIONS.**

”

- Class 1, Division 2 device certified for hazardous area application
- DIN Rail design for industrial automation applications
- Intel® Celeron® N2930 Bay Trail-M Processor (EX)
- Onboard Intel® Atom® Processor E3950 1.6 GHz, up to 2.0 GHz (EX-P)

1 x RS232 / 422 / 485 communication, select thru BIOS (EX-P)

1 x SO-DIMM, DDR3L 1866 MHz, 4GB

Fanless design

4 x Giga LAN, 3 x USB 3.2 Gen 1, 1 x USB 2.0, 1 x VGA, 1 x Line out, 1 x line in, 1 x Mic in, 1 x Power Jack (EX-P)

Fanless, streamlined enclosure for highly efficient heat Dissipation

AWS IoT Greengrass certified

Operating temperature -40°~70°C (EX-P)

## Custom configuration

Up to  
**8 GB**

Memory

Up to  
**512 GB**

Storage



WLAN

## Application



### Petrochemical Processing Plant

“STABLE PERFORMANCE  
IN A COMPACT RUGGED  
DESIGN”

Winmate's compact fanless DIN-Rail Box PC IBDRW100-EX-P serves as the system controller of a monitoring system in a petrochemical plant to control and monitor on-site data.

# C1D2 Box PC

## ITMH100-EX

### Custom configuration



Memory



Storage



WLAN



HDMI



**“CLASS 1 DIVISION 2, GROUP A-D,  
T5 CERTIFICATION.”**

”

- Intel® Tiger Lake UP3 Core™ i5 1135G7
- Multi Video Output , HDMI/ Display Port

---

Auto detection of the connected display, no settings necessary

---

---

Quick & easy replaceable hard disk design, no tools required

---

---

Support wide range 9-29V DC input

---

---

Optional with modular front display as a Panel PC

---

---

Expansion slot for PCIe x4

---

### Application



### Ultimate Productivity for Field Work

#### “MULTI VIDEO OUTPUT”

Features a powerful multi-video output function and supports various combinations of portrait and landscape screens to perfectly fit your digital signage applications.

# 12.1"~23.8" ATEX Panel PC M Series



**“ EXPLOSION PROOF.  
FOR SAFE OPERATIONS. ”**

- Intel® 11th Generation Tiger Lake UP3 Core™ i5 CPU
- Signature true flat display screen with edge-to-edge design
- Aluminum, anti-corrosion treated housing
- Superior sealing with front IP65 protection against dust and water

---

Projected Capacitive Multi-Touch Screen (PCAP)

---

Fanless design

---

Support wide range 9-29 V DC input

---

Quick & easy removable 2.5" SSD bay slot

---

Support PCIe x 4 card

---

Class 1 Division 2, Group A-D, certified for hazardous area application

---

Signature true flat display screen with edge-to-edge design

---

Superior sealing with front IP65 protection against dust and water

---

## Custom configuration

Up to  
**32 GB**

Memory

Up to  
**512 GB**

Storage



WLAN



HDMI



DP

## Application



## **Oilfield Drilling Monitoring System**

**“THE HIGHEST STANDARD  
IN RELIABILITY AND  
SERVICE”**

The M Series panel PCs were installed as part of an oilfield drilling monitoring system that now allows for better control over operations.

## Custom configuration



Memory



Storage

## Application



### Gas Pipe Monitoring

“GAS DISTRIBUTION  
PROCESS VISUALIZATION  
AND OPERATOR  
CONTROL”

ATEX-certified 15" panel PC  
R15IB3S-65EX visualizes each  
step of the gas distribution  
journey from extraction to the  
refinery to improve production  
control and monitor possible  
leakage.

# 15" ATEX Panel PC R15IB3S-65EX/ R15ID3S-65EX



## “ OPTIMIZE PERFORMANCE IN HAZARDOUS LOCATIONS. ”

- 15", 1024 x 768, PCAP touchscreen
- Intel® Celeron® Processor N2930 (R15IB3S-65EX)  
Intel® Atom® N2600 Processor (R15ID3S-65EX)
- Windows IoT Enterprise/ Linux Ubuntu

---

Class 1, Division 2 & ATEX Zone 2 certified for  
hazardous area applications

---

Fanless, streamlined enclosure for highly efficient  
heat dissipation

---

Five wire resistive touch screen (Explosion-proof)  
(R15ID3S-65EX)

---

Stainless housing

---

Wide operation temperature from -20 to 50°C

---

Projected Capacitive Multi-Touch Screen (PCAP)  
(R15IB3S-65EX)

---

# 19" ATEX Panel PC

## R19IHAT-66EX/ R19IHAT-66EX-T



## “ OPTIMIZE PERFORMANCE IN HAZARDOUS LOCATIONS. ”

- 19", 800 nits LCD panel PC (Optional 1000 nits)
- Intel® Haswell Core™ i5-4300U (Optional i7-4650U) (EX)
- Intel® 11th Tiger Lake Core™ i5-1135G7 Processor (EX-T)
- Windows IoT Enterprise/ Linux Ubuntu

Class 1, Division 2 & ATEX Zone 2 certified for hazardous area applications

Fanless, streamlined enclosure for highly efficient heat dissipation

Aluminum housing

Intelligent heater for working in extreme cold environments -40°C

4GB SO-DIMM, DDR3L 1600 MHz (EX)

4GB SO-DIMM, DDR4 3200 MHz (EX-T)

VESA mount and Panel mount

### Custom configuration

Up to  
**8 GB**

Memory (EX)

Up to  
**64 GB**

Memory (EX-T)

Up to  
**512 GB**

Storage

### Application



### Field Work Inspection

“INDUSTRIAL ATEX  
PANEL PC FOR PORTABLE  
DIGITAL RADIOGRAPHY.”

With portable digital radiography (DR) technology, field workers can use its x-ray scanning features to evaluate power lines and even preventive maintenance in oil or gas applications.



# 15" IP65 Stainless ATEX Display R15L600-65EX

## Custom configuration



M12 Type  
RS232



1000  
Brightness



**“ EXPLOSION PROOF.  
FOR SAFE OPERATIONS. ”**

- 15", 1024 x 768, 550 nits LCD Panel
- Stainless steel design
- Fanless design

---

Explosion-proof 5-wire resistive touch

---

IP65 Certified, dust-proof and water-resistant

---

Support 9-36V DC input, M12 Type connector

---

Class 1, Division 2 & ATEX Zone 2 application certification

---

Wide temperature range -20°C to 50°C

---

## Application



### Oilfield Drilling Monitoring System

**"THE HIGHEST STANDARD  
IN RELIABILITY AND  
SERVICE"**

The 15" aluminum display was installed as part of an oilfield drilling monitoring system that now allows for better control over operations.

# 6.5"~23.8" Outdoor Display Resistive Display



“ REACH BEYOND  
THE FRONT DOOR. ”

- Industrial-grade high-quality and high-resolutions displays
- Wide temperature liquid crystal panel is up to 60°C

---

Backlight design to ensure high reliability and durability

---

High humidity and durability testing to ensure reliability in outdoor environments circular polarizer design provides sunlight readability

---

Comprehensive product line is available in sizes ranging from 6.5" to 23.8" for optimum visibility in outdoor

---

## Custom configuration



HDMI



DVI



Audio line in  
& Speaker



-25~60°C  
Wide temperature  
solution

## Application



## **Captivate Your Audience with Outdoor Displays**

“BUILT TO WEATHER THE  
STORM AND DISPLAYS  
THAT SHINE IN ANY  
LIGHT”

With Winmate, you can extend your message beyond your business, whether it's in your storefront window or outside in the elements. Ready to work around the clock, Winmate outdoor digital signage and window displays empower you to always present a dynamic and vibrant message.

# 7"~55" Outdoor Display PCAP Display

## Custom configuration



HDMI



DVI



Audio line in  
& Speaker



-25~60°C  
Wide temperature  
solution



## “ OUTDOOR DIGITAL SIGNAGE AND WINDOW DISPLAY. ”

- Industrial-grade high-quality and high-resolutions displays
- Wide temperature liquid crystal panel is up to 60°C

---

Backlight design to ensure high reliability and durability

---

High humidity and durability testing to ensure reliability in outdoor environments circular polarizer design provides sunlight readability

---

Comprehensive product line is available in sizes ranging from 7" to 55" for optimum visibility in outdoor

---

## Application



## Outdoor Smart Signage Solutions

“DISPLAY YOUR MESSAGE  
IN HEAT, COLD, RAIN,  
SNOW AND DUST”

Winmate outdoor digital signage engineered from the ground up to weather the elements with high-brightness, protective glass and IP56 certification.

**BRIGHT TO  
MEET YOUR  
CUSTOMERS  
WHERE  
THEY ARE**







# **RUGGED COMPUTING PRODUCTS FOR MISSION CRITICAL**

TOMORROW'S TECHNOLOGY FOR  
TODAY'S CHALLENGE

