



www.winmate.com

INFRASTRUCTURE

**EV Charging Stations/
Utilities/
Energy/
Agriculture/
Oil & Gas/
Mining**

A composite image. The top half shows an industrial facility, possibly an oil or gas refinery, with yellow steel structures and smokestacks, set against a sunset sky over the ocean. The bottom half shows a person's hands using a mobile device mounted in a vehicle's dashboard, with a steering wheel visible on the left.

**RUGGED AND MOBILE DEVICE TO
STREAMLINE FIELD WORKERS
EFFICIENCY**

Q1 - 2024

About Winmate

Founded in 1996, Winmate Inc. is a pioneer in rugged computing technology. Winmate has provided business leaders worldwide with reliable, robust solutions for the most challenging industrial conditions for over two decades. From R&D to manufacturing to in-house testing, Winmate Inc. manages the entire product development process with ready-made products available for quick deployment. Today Winmate's innovative approach has helped countless enterprises at every level with equipment automation and seamless Industrial Internet of Things (IIoT) integration.

From the industrial display, panel PC, HMI, embedded systems to rugged mobile devices, Winmate caters to industries ranging from transportation and logistics to marine and military, railway, oil, and gas, and provides customization services to create a unique solution for specific customer requirements.

The Winmate Difference

Innovation and Ruggedness

With innovation and ruggedness, our products are designed to meet the requirements of vertical markets' environmental standards.

Engineering Intelligence

We are committed to maintaining the highest standards in engineering excellence to ensure our products deliver reliability, durability, and optimized performance.

Quality Commitment

Quality assurance and entire engineering processes are conducted in-house. It is why we invested significantly in our state-of-the-art testing facility with additional global support.

“
**INNOVATIVE
TECHNOLOGY FOR
OPERATIONAL
EXCELLENCE.**
”

Efficiency

Our team is committed to efficiency and maintaining the shortest possible development cycles. The whole development process is conducted in-house to achieve the market advantage in speed and quality from design to testing.

Reliability

Reliability, service, and support are part of our foundation. Every product scrutinizes industrial standards testing to verify electrical, mechanical, thermal, and firmware design performance.

Customized Solutions

Years of experience allow Winmate to offer customized solutions for different applications.

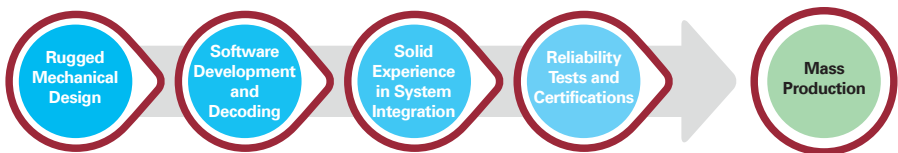
From product design to accessories, our engineering team designs and support the system integration process.

- CUSTOMIZED CONFIGURATION
- CUSTOM OS IMAGE
- CUSTOM BIOS
- ENCLOSURE DESIGN
- PERIPHERALS AND OPTIONS
- CUSTOM-DESIGNED ACCESSORIES

Technical Know-How

We understand that access to cutting-edge solutions purposely built for their applications is imperative for enterprises operating in rugged or potentially hazardous environments. As a result, Winmate locates its resources from project research and design, software development and customization, product verification and validation, and in-house testing to research and implement the latest technologies available.

The latest technologies we deploy for our rugged products:



- Dry and wet optical bonding
- Panel enhancement for sunlight readability
- Anti-reflection (AR) and anti-glare (AG) glass protection coating
- Light sensor
- Hyper dimming
- Electronic potting
- Touch screen integration: projected capacitive, resistive, or SAW touch
- Waterproof enclosure
- Military EMI and mesh coating
- Wireless capabilities
- Data capture devices integration
- Defroster for ultra-low temperature environments
- Stainless steel SUS 316/ AISI 316
- Shock and vibration resistance
- Wide-range operation temperature



**WE DELIVER ENTERPRISE MOBILITY SOLUTIONS
FOR FIELD SERVICE OPERATIONS.**



RUGGED TABLETS

Portable and wireless rugged tablet computers can survive in any environment and get real work done.



VEHICLE-MOUNTED COMPUTERS

Rugged vehicle-mounted computers for data collection in the warehouse and logistic applications, designed to fit seamlessly into forklifts, trucks, and other vehicles.



G-WIN PANEL PC

Rugged Panel PC for data collection in the warehouse and logistic applications, designed to fit seamlessly into forklifts, trucks, and other vehicles.

W12MG3S-GSB1



Application Story

Transforming Agriculture with 12.3" Panel PC



Background

In a traditional way of agriculture, where generations of farmers had relied on age-old methods, a shift towards modernization became imperative. Traditional methods were no longer sufficient to optimize crop yields and resource management. This is where Winmate's innovative technology came into play.

Core Products

- W12MG3S-GSB1 - 12.3" ARM 2 x A78 2.2GHz + 6 x A55 2.0GHz
- L156 Series - 15.6" Rugged Laptop

Main Challenges

- Data Integration
- Harsh Conditions
- User-Friendly Interface

Why Winmate

- Robust build
- Versatile OS
- Rapid Data Processing
- Customization

“ **EMPOWERING AGRICULTURE WITH ROBUST PERFORMANCE AND SEAMLESS DATA INTEGRATION** ”



Application Diagram: Mining Sector

12" G-WIN GS Series Panel PC W12MG3S-GSB1

NEW
PRODUCT



“PRECISION AND EFFICIENCY IN YOUR HANDS”

- 12.3", 1920 x 720 Panel PC with projected capacitive multitouch screen
- ARM 2 x A78 2.2GHz + 6 x A55 2.0GHz
- Android 13

M12 waterproof connectors , IP65 waterproof and dustproof

Shock and vibration resistance according to MIL-STD-810H

Support Android 13 operating system

Wide power input 10-60V DC with ignition

Custom Configuration



WLAN



BT



WWAN



GPS/
GLONASS



SIM Card
Slot



M12 Type

Application



Farming Management

EFFICIENCY UNLEASHED:
RUGGED TABLET FOR
AGRICULTURE

W12MG3S-GSB1 Panel PC boasts a robust ARM A78+A55, ensuring top-tier performance for your agricultural needs. Its IP65 rating protects against water and dust, while the true flat, easy-to-clean design simplifies maintenance.

Application Story

Industrial Field Work



Background

Field service workers face various challenges working in remote locations and unfamiliar environments, and every minute of downtime results in lost revenue. Access to critical information and wireless communications is the top priority for workers to provide fast service. Winmate comes with rugged mobile solutions capable of increasing productivity in the field.

Core Products

- Rugged mobile computer E430 Series, E500 Series
- Rugged tablet M101 Series

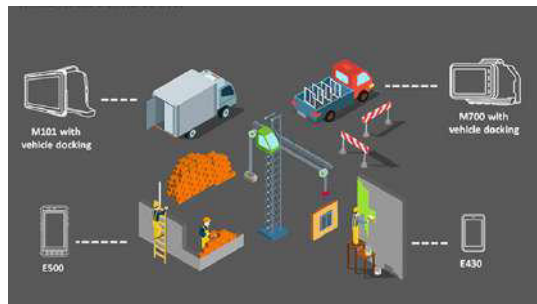
Main Challenges

- Changing weather conditions
- Work in remote locations
- Data collection

“
**RUGGED MOBILE
DEVICES TO PERFORM
INSPECTION,
UTILITY CONTROL
AND REAL-TIME
REPORTING.**
”

Why Winmate

- Rugged design
- Shock, drop, and vibration resistance
- Wireless communications



Application Diagram: Industrial Field Work

5" Handheld Computer E500QK



FC CE

“ **RUGGED DESIGN
BUILT TO SURVIVE.** ”

- 5", P-CAP touchscreen
- Qualcomm® Snapdragon™ 660 (Octa-core 2.2 GHz)
- Android 9.0

3 GB RAM, 32 GB eMMC

Support hand/ gloves and rain mode

Optical bonding for sunlight viewability

8 MP webcam, 13 MP rear camera with autofocus

USB 3.0 Type C (OTG)

WLAN, BT, GPS, GLONASS, WWAN (Optional)

19 keypad include power key

Ambient light sensor, E-compass, Gyro, acceleration sensors

IP67 waterproof and dustproof

MIL-STD-810G shock, vibration and drop resistance

Custom Configuration



Docking
Connector



NFC RFID
Reader



WWAN

Application



Courier Shipping Service

COMPACT AND DURABLE HANDHELD COMPUTER

Rugged specifications of the compact E500QK handheld computer mean that personnel can take photos, enter data, and take photos in any harsh environment. The latest

Android operating system offers tremendous potential for developing or adapting mobile computer applications.

7" Rugged Android Tablet M700DQ8



“ **COMPACT. DURABLE.
VIBRATION RESISTANT.** ”

- 7", 1280 x 720, P-CAP touchscreen
- Qualcomm® Snapdragon™ 660, Octa-core up to 2.2 GHz

3 GB RAM, 32 GB eMMC

Support hand/ gloves and rain mode

Optical bonding for sunlight viewability

Ambient light sensor, E-compass, Gyro & acceleration sensors

8 MP webcam, 13 MP rear camera with autofocus

USB 3.0 Type C (OTG)

WLAN, BT, GPS, GLONASS

NFC (Read / Write, Peer-to-Peer mode) (Optional)

550g lightweight portability

IP65 waterproof and dustproof

MIL-STD-810G shock, vibration and drop resistant

Custom Configuration



Barcode
Reader



NFC RFID
Reader



WWAN

Application



Forklift Solution

FROM FIXED MOUNTING TO PORTABLE SOLUTION

The compact M700DQ8 rugged tablet with custom vehicle docking delivers a portable and robust solution for warehouse management and route optimization.

7" Rugged Android Tablet M700DM9



FCC CE

“ RATED FOR EXTREME TEMPERATURE USE. ”

- 7", 1280 x 720, P-CAP touchscreen
- ARM A73 + A53 Rugged Android Tablet

IP65 waterproof and dustproof

4 GB RAM + 64 GB eMMC

Rated for extreme temperature use

Supports Android 11.0 OS, Sunlight readable android tablet

Custom Configuration



Barcode
Reader



NFC RFID
Reader



WWAN

Application



Forklift Solution

FROM FIXED MOUNTING TO PORTABLE SOLUTION

The compact M700DM9 rugged tablet with custom vehicle docking delivers a portable and robust solution for warehouse management and route optimization.

8" Windows Rugged Tablet M900P/ M900PT

Custom Configuration



Memory



Storage



HF RFID
Reader



Barcode Reader



WWAN



**PORTABLE AND
POWERFUL SOLUTION.**

- 8", 1280 x 800, IPS LED
- Intel® Pentium® N4200 (2M Cache, up to 2.5 GHz)
- Windows 10 IoT Enterprise

4 GB LPDDR4, 128 GB SSD

Light sensor, g-sensor, Gyro

2 MP webcam, 8 MP rear camera with autofocus

GPS, GLONASS

USB 3.0 (Type A), USB 3.0 (Type C)

Built-in smart card reader (Default M900PT)

IP65 waterproof and dustproof

MIL-STD-810G shock, vibration and drop resistance



Connected Truck

CONNECTIVITY FOR VEHICLES ON THE ROAD

Winmate developed a smart truck solution for a heavy-duty vehicle. Installed on a dashboard by vehicle cradle, the 8" rugged tablet M900P and custom designed vehicle gateway VG-100 now connect in-vehicle systems and allow status monitoring of a semi-truck in Europe.

10.1" Windows Rugged Tablet M101P



“ **OPTIMUM SIZE,
MAXIMUM PRODUCTIVITY.** ”

- 10.1", 1920 x 1200, IPS LED
- Intel® Pentium® N4200 (2M Cache, up to 2.5 GHz)
- Windows 10 IoT Enterprise (Optional),
Linux Ubuntu 20.04 (Optional)

4 GB LPDDR4, 128 GB SSD, micro SDXC card slot

Light sensor, g-sensor, Gyro

2 MP webcam, 8 MP rear camera with autofocus

Anti-glare touch treatment

USB 3.0 Type-A, USB 3.0 Type-C

WLAN, BT, GPS, GLONASS

IP65 waterproof and dustproof

MIL-STD-810G shock, vibration, and drop resistance

Custom Configuration



Memory



Storage



Barcode
Reader



WWAN



HF RFID
Reader



Expansion
Port



High
Capacity
Battery 16hr

Application



Substation Field Work

**RUGGED AND MOBILE
DEVICE TO STREAMLINE
FIELD WORKERS
EFFICIENCY**

Field workers in power substations usually work outside and require mobile devices to perform inspection, utility control and instant reporting.

11.6" Windows Rugged Tablet M116P

Custom Configuration



Memory



Storage



WWAN



GigaLAN
Port



Barcode
Reader



HF RFID
Reader



Application



Automotive Manufacturing

SUITABLE FOR FACTORY ENVIRONMENT

The M116P series rugged tablet features high processing capabilities, wireless connectivity options, and data capture modules for extraordinary performance.

“**BRILLIANT SUNLIGHT
READABLE SCREEN.**”

- 11.6", 1920 x 1080, LED Panel
- Intel® Pentium® N4200 1.1 GHz, up to 2.5 GHz
- Windows 10 IoT Enterprise (Optional)

4 GB LPDDR4, 128 GB SSD

Light sensor, g-sensor, Gyro

2 MP webcam, 8 MP rear camera with autofocus

WLAN, BT, GPS, GLONASS

USB 3.0 (Type A), USB 3.0 (Type C)

Smart Card Reader (Default M116PT)

Kensington lock

IP65 waterproof and dustproof

MIL-STD-810G shock, vibration, and drop resistance

11.6" Windows Rugged Tablet M116TG



“ **HIGH PROCESSING POWER IN A RUGGED ENCLOSURE.** ”

- 11.6", 1920 x 1080, IPS LED
- Intel® Core™ i5-1135G7 Tiger Lake Processor
- Windows 10 IoT Enterprise

IP65 waterproof and dustproof, MIL-STD-810H shock, vibration and drop resistance

Sunlight readable with antiglare solution

Hotswappable battery design

USB Type-C port support power delivery 20V In

Custom Configuration



Memory



Storage



WWAN



Gigabit LAN Port



Barcode Reader



HF RFID Reader

Application



Warehouse Management

TRUSTWORTHY
PERFORMANCE
ACROSS THE LOGISTICS
ECOSYSTEM

The M116TG series rugged tablet, designed for warehouse, transportation, and field service, offers top performance, versatile connectivity, data capture, and all-day usage with a hot-swap battery.

14" Windows Rugged Tablet M140TG/ M140TGT



Custom Configuration

Up to
32 GB

Memory

Up to
2 TB

Storage



WWAN

WWAN



Smart Card
Reader
(M140TGT)



HF RFID
Reader



GPS/
GLONASS

Application



See The Data With Less Scrolling

USE IT AT EASE
ANYWHERE AND EVERY
TIME

The M140TG's 14 inch tablet comes with an optional kickstand/hard handle, and mounting choices make it very easy to carry. Rest assured that the device can withstand the impact, shock, vibration, liquid spills, and dust.



“ ALWAYS ON INDUSTRIAL
MOBILE PC. ”

- 11th Gen. Intel® Processor Family – Tiger Lake Processor
- 14-inch tablet, 1920 x 1080 wide viewing angle LED Panel

Optical bonding and anti-glare technology for sunlight readability

IP65 waterproof and dustproof

Hot-swappable battery for whole-day work

Integrated smart card reader

Operate in temperatures ranging from -20°C to 60°C (when charging) or -10°C to 50°C (on battery)

10.1" Windows Rugged Tablet S101TG/ S101EK



“ RUGGED ENOUGH TO WITHSTAND WEAR & TEAR. ”

- 10.1", 1920 x 1200 WUXGA with P-CAP touch
- 11th generation Intel® Tiger Lake processor (S101TG)
- Intel® Elkhart Lake Celeron® N6211 (S101EK)

-
- 4 GB DDR4, 128 GB SSD, micro SDXC card slot
-
- Light sensor/ g-sensor/ Gyro
-
- 2MP Webcam , 8MP Auto-focus rear camera
-
- Anti-glare touch treatment
-
- USB 3.0 Type-A, USB 3.0 Type-C, RJ45-10/100/1000 GigaLAN port, Micro SDXC slot, docking connector
-
- WLAN, BT, GPS, GLONASS
-
- Support hand/ gloves and rain mode
-
- MIL-STD-810H shock, vibration, and drop resistance

Custom Configuration

Up to 32 GB Memory (S101TG)	Up to 16 GB Memory (S101EK)	Up to 2 TB Storage (S101TG)
Up to 512 GB Storage (S101EK)	 Barcode Reader	USB/UART Expansion Port
 Battery Hotswap	 WWAN	

Application



Industrial Field Work

MOBILE DEVICES BUILT TO WITHSTAND THE HASSLE OF INDUSTRIAL USE

Field workers equipped with modern technologies for remote data collection and communications with back office finish tasks faster and more efficient.

10.1" Android Rugged Tablet S101M9/ L



Custom Configuration



RFID
Reader



Barcode Reader



WWAN



Battery Hotswap



Micro HDMI Port



Application



Industrial Android Durable Tablet

BRILLIANT DISPLAY WITH ULTIMATE TOUCH

The 10.1" S101 series features projected capacitive (P-CAP) multi-touch for the best user experience and allows switching windows, taking snapshots, zooming in, and rotating objects easily to take the full advantages of the touch interface. Supports Rain, Glove, Stylus modes.

“**ROBUST TABLET TO
WITHSTAND INDUSTRIAL USE.**”

- 10.1", 1280 x 800 TFT LCD Display (S101M9L)
- 10.1", 1920 x 1200 TFT LCD Display (S101M9)
- Android 11.0
- ARM A73 x 4 (2.0 GHz) + A53 x 4 (2.0 GHz)

Integrated 1D/2D barcode reader (Optional)

Integrated NFC module (Optional)

8.0 MP camera in front side

13.0 MP rear camera (with LED auxiliary light, auto focus)

4 GB RAM + 32 GB eMMC

Anti-glare touch treatment

WLAN, BT, GPS, GLONASS, WWAN (Optional)

SOTI MobiControl compliance



RUGGED ANDROID TABLETS SET A NEW STANDARD FOR FIELD SERVICE WORKERS

PERFORMANCE IMPROVED.
FASTER THAN EVER.

Oil & Gas



Overview

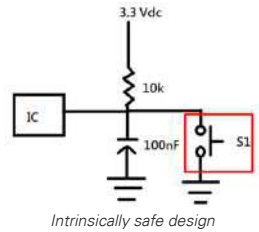
Oil rigs and remote pipeline locations are the most dangerous and challenging work environments anywhere. Winmate rugged computers are designed for the harsh environments of an oil refinery or a drilling rig and come with ATEX Zone 2 and Class 1 Division 2 (C1D2) certifications. By employing automated processes, oil and gas companies can increase production wells, improve production control, and reap the benefits of modern technologies.

Technology

Winate has technology know-how for the production and development of explosion-proof devices:

Intrinsic Safety Schematic Design

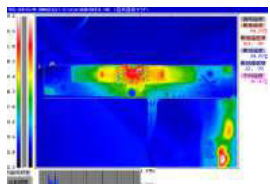
Our engineers design the intrinsic safety schematics for the explosion-proof product line. Our engineers design the electronic system to ensure that the temperature under all fault conditions can never rise to a value that may cause explosive gasses' ignition.



Intrinsically safe design

Non-Sparking Device

Our design guarantees that the ignition of a hazardous atmosphere does not occur. It is achieved by ensuring that only low voltages and currents enter the hazardous area and that no significant energy storage is possible.



Thermal design

Application Story

Operator Control HMI for Oil Drilling Rig



Background

In the Oil & Gas industry, complex process control is required at all stages, from exploration, extraction, and transportation, to the refinement and the distribution of fossil fuels. These processes occur in harsh environments with the constant threat of dangerous substances in the air, where combustion can occur when proper precautions are ignored.

Core products

- ATEX Aluminum Panel PC
- ATEX Stainless Display
- ATEX DIN-Rail Box PC

Main Challenges

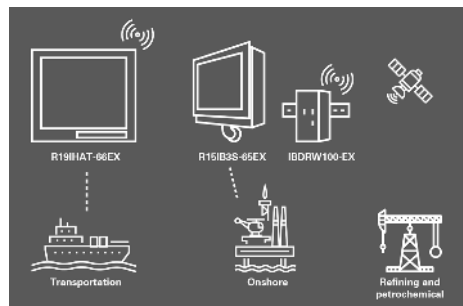
- Hazardous working environment
- Wide operating temperature
- Explosion-proof solution

Why Winmate

- Certified for C1D2, ATEX Zone 2
- Large, high-brightness display with optical bonding technology
- Wide operating temperature



Winate's ATEX HMI Panel PC



Application Diagram: Hazardous Locations

Application Story

Safe Operation in Hazardous



“With ATEX-Grade Industrial Rugged Panel PCs for Mining, Energy and Utilities Sectors”

Background

The mining sector entails numerous environmental challenges, off-grid location, dust, etc., that demands only the most rugged industrial Panel PCs available on the marketplace. These rugged industrial Panel PCs should assist various fieldwork-related capacities from numerous safety properties and vital technical applications to smooth-run the operations. At the same time, durable to hold up against the harshest climate conditions like severe temperature from subfreezing to extreme heat malfunctioning.

Mining is also a labor-intensive sector, making a sturdy and reputable touchscreen display is required. The devices used should handle on-site duties, increase and speed up work progress. Top-quality, rugged touchscreen PCs must be water- and dustproof, resistant to shock, vibration, drop, and anti-explosion. These features are essential for protecting the stability of the task at hand and ensuring the safety and security of the fieldworkers.

Core products

- R19IHAT-66EX-T ; 19" Intel® Core™ i5/i7 ATEX 1000nits Panel PC

Main Challenges

- Sunlight readability.
- Devices that include external and internal applications to enhance and improve fieldwork.
- Need to withstand extreme weather and environmental conditions.
- Use in the hazardous area.

Why Winmate

- Certified for Hazardous Locations
- Fully Rugged and Waterproof Design
- Tailor-made for Your Needs



Application Diagram: Mining Sector

Application Story

Smart Charging Station Solution



Background

With countries worldwide introducing mandates to cut the number of diesel and petrol cars, drivers are looking towards the future dominant car technology, i.e., electric vehicles (EVs). Deloitte predicts that over 25.3 million EVs will be sold by 2030. With the rise in EV use, the demand for electric vehicle charging stations is soaring.

Smart electric vehicle charging stations are connected to the Cloud. This allows all users to log in, locate charging stations on a map, reserve specific locations, pay online, check the charging status, and view focused promotions. The dedicated mobile app can be accessed using a smartphone, laptop, tablet, or directly through a touch screen at the charging station.

Core products

- 7" ATEX grade Android Tablet
- 15" C1D2 Panel PC
- ATEX grade embedded system

Main Challenges

- Outdoor applications
- Wide Range Communication Capabilities
- Embedded OS support and One-Stop Shopping
- Product longevity

Why Winmate

- Rugged Design for outdoor applications
- Vast Experiences in hazardous environments
- Specially built for industrial needs
- Product customization supports

“**SMART OUTDOOR PUBLIC CHARGING STATIONS HMI FOR ELECTRIC VEHICLES.**”



Application Diagram: EV Charging

7" ATEX Rugged Android PDA M700DQ8-EX



Custom Configuration



WWAN



NFC RFID
Reader



Barcode
Reader



“

ATEX ZONE 2 CERTIFICATION.

”

- Qualcomm® Snapdragon™ 660, Octa-core up to 2.2 GHz
- ATEX grade rugged android PDA
- 1280 x 720, TFT Panel with direct optical bonding

Supports Android 9.0 OS

Sunlight readable android tablet

IP65 waterproof and dustproof

Rated for extreme temperature use

ATEX Zone 2 application certification



Real-Time Data and Wireless Connectivity

REAL TIME DATA AND WIRELESS CONNECTIVITY

Real-time data access to the right information is crucial for mobile workers. With a host of features that include GPS / GLONASS, WLAN, BT, and optional 4G LTE, workers can now share files or communicate with each other anytime and anywhere.

10.1" ATEX Windows Rugged Tablet M101S-EX



“ **ROBUST TABLET TO
WITHSTAND INDUSTRIAL USE.** ”

- 10.1", 1920 x 1200, IPS LED
- Intel® Core™ i5-7200U Kaby Lake 2.5 GHz, up to 3.1GHz
- Windows 10 IoT Enterprise

Allows cross-zone operations in hazardous and explosive environments

Ex Certificate: Class I Division 2 (CID2), ATEX/IECEx Zone 2

Sunlight readable with anti-glare solution, fully ATEX tablet

Hot-swappable battery design with optional High capacity battery pack

IP65 waterproof and dustproof, MIL-STD-810G shock, vibration and drop resistance

Custom Configuration



Memory



Storage



Barcode Reader



WWAN



HF RFID Reader

Application



Delivery Service

INSTANTLY ACCESS ORDER INFORMATION

The M101S-EX rugged tablet with an LTE module and barcode scanner boosts productivity and speeds up delivery services, giving quick access to order information anywhere you go. The solution includes a vehicle cradle for in-vehicle mounting and charging.

C1D2 Box PC ITMH100-EX

Custom Configuration



Memory



Storage



WLAN



HDMI



**“CLASS 1 DIVISION 2, GROUP A-D,
T5 CERTIFICATION.”**

”

- Intel® Tiger Lake UP3 Core™ i5 1135G7
- Multi Video Output , HDMI/ Display Port

Auto detection of the connected display, no settings necessary

Quick & easy replaceable hard disk design, no tools required

Support wide range 9-29V DC input

Optional with modular front display as a Panel PC

Expansion slot for PCIe x4

Application



Ultimate Productivity for Field Work

MULTI VIDEO OUTPUT

Features a powerful multi-video output function and supports various combinations of portrait and landscape screens to perfectly fit your digital signage applications.

ATEX DIN Rail Box PC (C1D2)

IBDRW100-EX/ IBDRW100-EX-P



“ COMPACT FOR HAZARDOUS LOCATIONS. ”

- Class 1, Division 2 device certified for hazardous area application
- DIN Rail design for industrial automation applications
- Intel® Celeron® N2930 Bay Trail-M Processor (EX)
- Onboard Intel® Atom® Processor E3950 1.6 GHz, up to 2.0 GHz (EX-P)

1 x RS232 / 422 / 485 communication, select thru BIOS (EX-P)

1 x SO-DIMM, DDR3L 1866 MHz, 4GB

Fanless design

4 x Giga LAN, 3 x USB 3.2 Gen 1, 1 x USB 2.0, 1 x VGA, 1 x Line out, 1 x line in, 1 x Mic in, 1 x Power Jack (EX-P)

Fanless, streamlined enclosure for highly efficient heat Dissipation

AWS IoT Greengrass certified

Operating temperature -40°~70°C (EX-P)

Custom Configuration

Up to
8 GB

Memory

Up to
512 GB

Storage



WLAN

WLAN

Application



Petrochemical Processing Plant

STABLE PERFORMANCE
IN A COMPACT RUGGED
DESIGN

Winmate's compact fanless DIN-Rail Box PC IBDRW100-EX-P serves as the system controller of a monitoring system in a petrochemical plant to control and monitor on-site data.

12.1" ~23.8" ATEX Panel PC M Series

Custom Configuration



Memory



Storage



WLAN



HDMI



DP



**“ EXPLOSION PROOF.
FOR SAFE OPERATIONS. ”**

- Intel® 11th Generation Tiger Lake UP3 Core™ i5 CPU
- Signature true flat display screen with edge-to-edge design
- Aluminum, anti-corrosion treated housing
- Superior sealing with front IP65 protection against dust and water



Oilfield Drilling Monitoring System

**THE HIGHEST STANDARD
IN RELIABILITY AND
SERVICE**

The M Series panel PCs was installed as part of an oilfield drilling monitoring system that now allows for better control over operations.

Projected Capacitive Multi-Touch Screen (P-CAP)

Fanless design

Support wide range 9-29 V DC input

Quick & easy removable 2.5" SSD bay slot

Support PCIe x 4 card

Class 1 Division 2, Group A-D, certified for hazardous area application

Signature true flat display screen with edge-to-edge design

Superior sealing with front IP65 protection against dust and water

15" ATEX Panel PC

R15IB3S-65EX/ R15ID3S-65EX



“ OPTIMIZE PERFORMANCE IN HAZARDOUS LOCATIONS. ”

- 15", 1024 x 768, P-CAP touchscreen
- Intel® Celeron® Processor N2930 (R15IB3S-65EX)
Intel® Atom® N2600 Processor (R15ID3S-65EX)
- Windows IoT Enterprise/ Linux Ubuntu

Class 1, Division 2 & ATEX Zone 2 certified for hazardous area applications

Fanless, streamlined enclosure for highly efficient heat dissipation

Five wire resistive touch screen (Explosion-proof) (R15ID3S-65EX)

Stainless housing

Wide operation temperature from -20 to 50°C

Projected Capacitive Multi-Touch Screen (P-CAP) (R15IB3S-65EX)

Custom Configuration

Up to
8 GB

Memory
(R15IB3S-65EX)

Up to
512 GB

Storage

Application



Gas Pipe Monitoring

**GAS DISTRIBUTION
PROCESS VISUALIZATION
AND OPERATOR
CONTROL**

ATEX-certified 15" panel PC R15IB3S-65EX visualizes each step of the gas distribution journey from extraction to the refinery to improve production control and monitor possible leakage.

Custom Configuration

Up to
8 GB

Memory (EX)

Up to
64 GB

Memory (EX-T)

Up to
512 GB

Storage (EX)

Up to
4 TB

Storage (EX-T)

19" ATEX Panel PC R19IHAT-66EX/ R19IHAT-66EX-T



Application



“ OPTIMIZE PERFORMANCE IN HAZARDOUS LOCATIONS. ”

- 19"; 800 nits LCD panel PC (Optional 1000 nits)
- Intel® Haswell Core™ i5-4300U (Optional i7-4650U) (EX)
- Intel® 11th Tiger Lake Core™ i5-1135G7 Processor (EX-T)
- Windows IoT Enterprise/ Linux Ubuntu

Class 1, Division 2 & ATEX Zone 2 certified for hazardous area applications

Fanless, streamlined enclosure for highly efficient heat dissipation

Aluminum housing

Intelligent heater for working in extreme cold environments -40°C

4GB SO-DIMM, DDR3L 1600 MHz (EX)

4GB SO-DIMM, DDR4 3200 MHz (EX-T)

VESA mount and Panel mount

Field Work Inspection

INDUSTRIAL ATEX PANEL PC FOR PORTABLE DIGITAL RADIOGRAPHY

With portable digital radiography (DR) technology, field workers can use its x-ray scanning features to evaluate power lines and even preventive maintenance in oil or gas applications.

**BRIGHT TO
MEET YOUR
CUSTOMERS
WHERE
THEY ARE**



15" IP65 Stainless ATEX Display R15L600-65EX



Custom Configuration



M12 Type
RS232



1000
Brightness

Application



Oilfield Drilling Monitoring System

THE HIGHEST STANDARD
IN RELIABILITY AND
SERVICE

The 15" aluminum display was installed as part of an oilfield drilling monitoring system that now allows for better control over operations.



“ **EXPLOSION PROOF.
FOR SAFE OPERATIONS.** ”

- 15", 1024 x 768, 550 nits LCD Panel
- Stainless steel design
- Fanless design

Explosion-proof 5-wire resistive touch

IP65 Certified, dust-proof and water-resistant

Support 9-36V DC input, M12 Type connector

Class 1, Division 2 & ATEX Zone 2 application certification

Wide temperature range -20°C to 50°C

6.5" ~ 23.8" Outdoor Display Resistive Display



“ REACH BEYOND
THE FRONT DOOR. ”

- Industrial-grade high-quality and high-resolutions displays
- Wide temperature liquid crystal panel is up to 60°C

Backlight design to ensure high reliability and durability

High humidity and durability testing to ensure reliability in outdoor environments circular polarizer design provides sunlight readability

Comprehensive product line is available in sizes ranging from 6.5" to 23.8" for optimum visibility in outdoor

Custom Configuration



HDMI



DVI

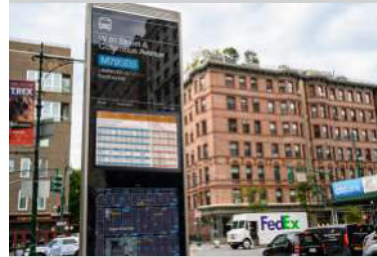


Audio line in
& Speaker



-25~60°C
Wide temperature
solution

Application



Captivate Your Audience with Outdoor Displays

**BUILT TO WEATHER THE
STORM AND DISPLAYS
THAT SHINE IN ANY
LIGHT**

With Winmate, you can extend your message beyond your business, whether it's in your storefront window or outside in the elements. Ready to work around the clock, Winmate outdoor digital signage and window displays empower you to always present a dynamic and vibrant message.

7" ~ 55" Outdoor Display P-CAP Display

Custom Configuration



HDMI



DVI



Audio line in
& Speaker



-25~60°C
Wide temperature
solution



“ **OUTDOOR DIGITAL SIGNAGE
AND WINDOW DISPLAY.** ”

Application



Outdoor Smart Signage Solutions

DISPLAY YOUR MESSAGE
IN HEAT, COLD, RAIN,
SNOW AND DUST

Winmate outdoor digital signage engineered from the ground up to weather the elements with high-brightness, protective glass and IP56 certification.

- Industrial-grade high-quality and high-resolutions displays
- Wide temperature liquid crystal panel is up to 60°C

Backlight design to ensure high reliability and durability

High humidity and durability testing to ensure reliability in outdoor environments circular polarizer design provides sunlight readability

Comprehensive product line is available in sizes ranging from 7" to 55" for optimum visibility in outdoor

RUGGED COMPUTING PRODUCTS FOR MISSION CRITICAL



TOMORROW'S TECHNOLOGY FOR TODAY'S CHALLENGE