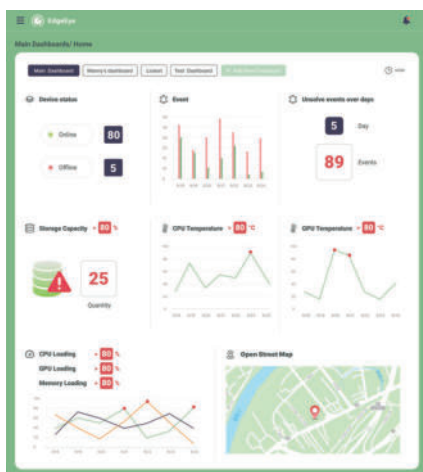




EdgeEye: Device Remote Management System

Browser-accessed cloud management platform conveniently manage edge devices anywhere



EdgeEye revolutionizes device management, offering users a simplified, yet powerful platform for overseeing edge device performance. From real-time device monitoring, swift anomaly alerts, and robust out-of-band management tools for recovery actions, power control, and more—significantly cutting down on onsite maintenance time and costs while ensuring minimal downtime.

EdgeEye, purpose-built for the edge, offers businesses great operational efficiency, resilience, and cost savings.

Status Monitoring



Help clients monitor the hardware status, such as CPU/ GPU loading, memory utilization and memory capacity.

Alert Notification



Defines custom threshold of hardware status, and the system will send warning notification immediately when triggering the threshold.

Remote Control



Support functions of reboot, shutdown, backup and recovery via out-of-band management modules.

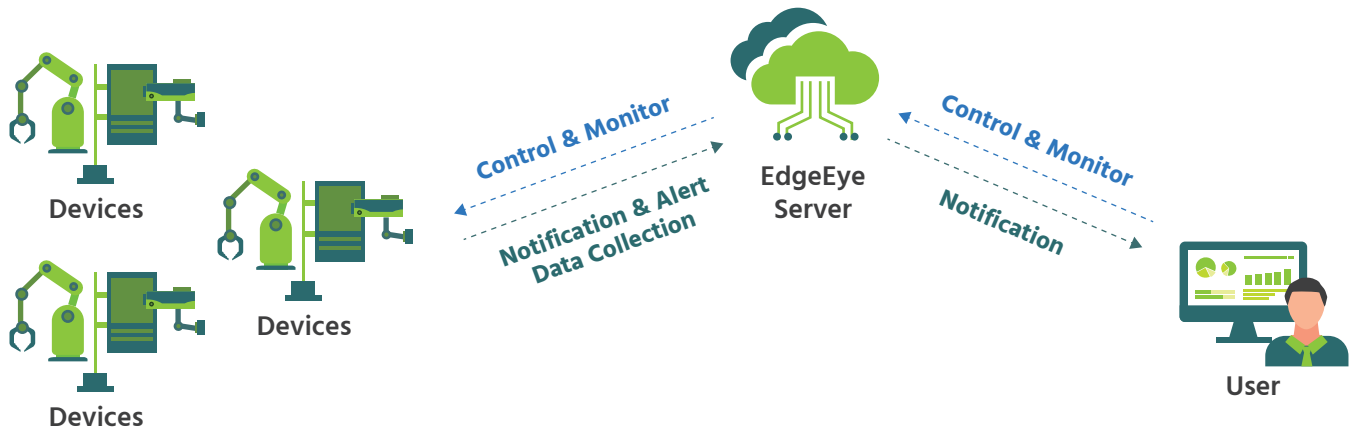
User-Friendly Interface



Flexibly set and arrange monitoring data format, supporting group scheduling and control function.

Remote Out-of-Band Management

For edge devices equipped with out-of-band management modules, EdgeEye enables remote Out-of-Band device management function to resolve instantly unresponsive devices and abnormalities conditions.



Dual-band Management

Support out-of-band and in-band backup for total management availability and increased maintenance efficiency.



Power Control

Remotely reboot or power off devices to instantly resolve system crashes.



24/7 Stays Online

Ensure devices stay powered on for remote monitoring and uptime.

System Requirements

Server-side EdgeEye

- CPU: Intel Core i5 2.3 GHz
- Storage: 32GB RAM / 200GB root partition for the system
- Operating System: Linux Ubuntu 18.04+



Supports Aetina MegaEdge

Client-side EdgeEye

- Operating System: Linux Ubuntu 18.04+
- Browser: Google Chrome 9.0+ / Chromium



Supports Aetina DeviceEdge