



NEW PRODUCT SPEC SHEET

Model Number: K555



- Recommend for Intel® Core™ i5 I5-750; Xeon® Processor 3400 Series; Core™ i7 Processors I7-870 & I7-860; Socket LGA1156
- Active Cooler for 2U Server & Up

Overall Specification:

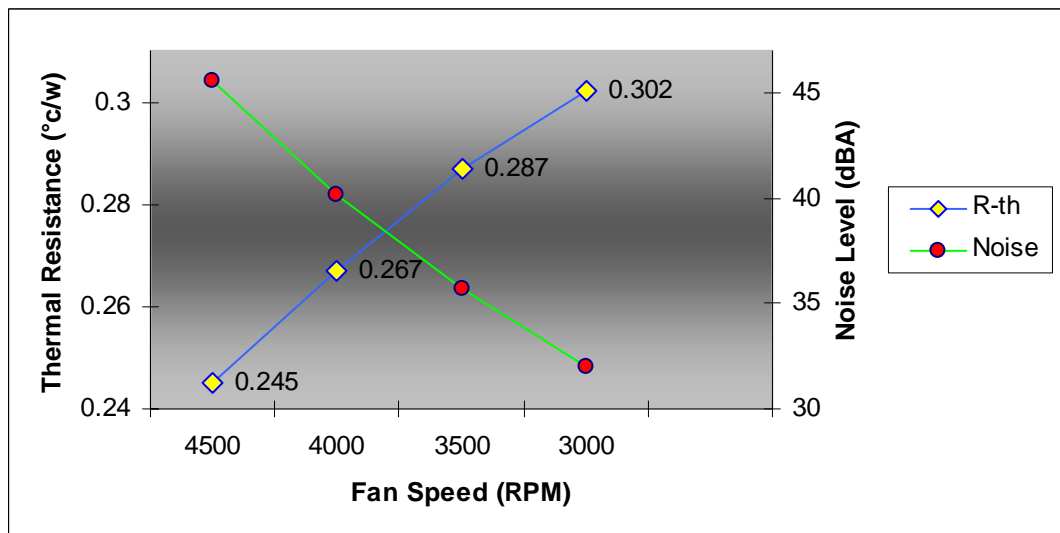
- Dimension: 94.0 x 87.5 x 67.7mm
- Weight: 460g ± 5g
- Material: Copper Base & Aluminum Fins with Heat pipes embedded
- 7720 Top-Down Blowing Fan
- Captive with Screw-on Retention
- Finger Guard Protection
- Back Strip Set is included
- Thermal Grease Pre-Printed with GE-Toshiba TIG830SP
- Support CPU Power up to 95 Watts

Fan Specification:

- Dimension: 77 x 77 x 20mm
- Bearing: Double-Ball
- Rated Voltage: 12V
- Rated Speed:
 - At Duty Cycle 0~20%: 1000 RPM
 - At Duty Cycle 50%: 2500 RPM
 - At Duty Cycle 100%: 4500 RPM
- Rated Input Power:
 - At Duty Cycle 0~20%: 0.84 W
 - At Duty Cycle 50%: 1.44 W
 - At Duty Cycle 100%: 6.0 W

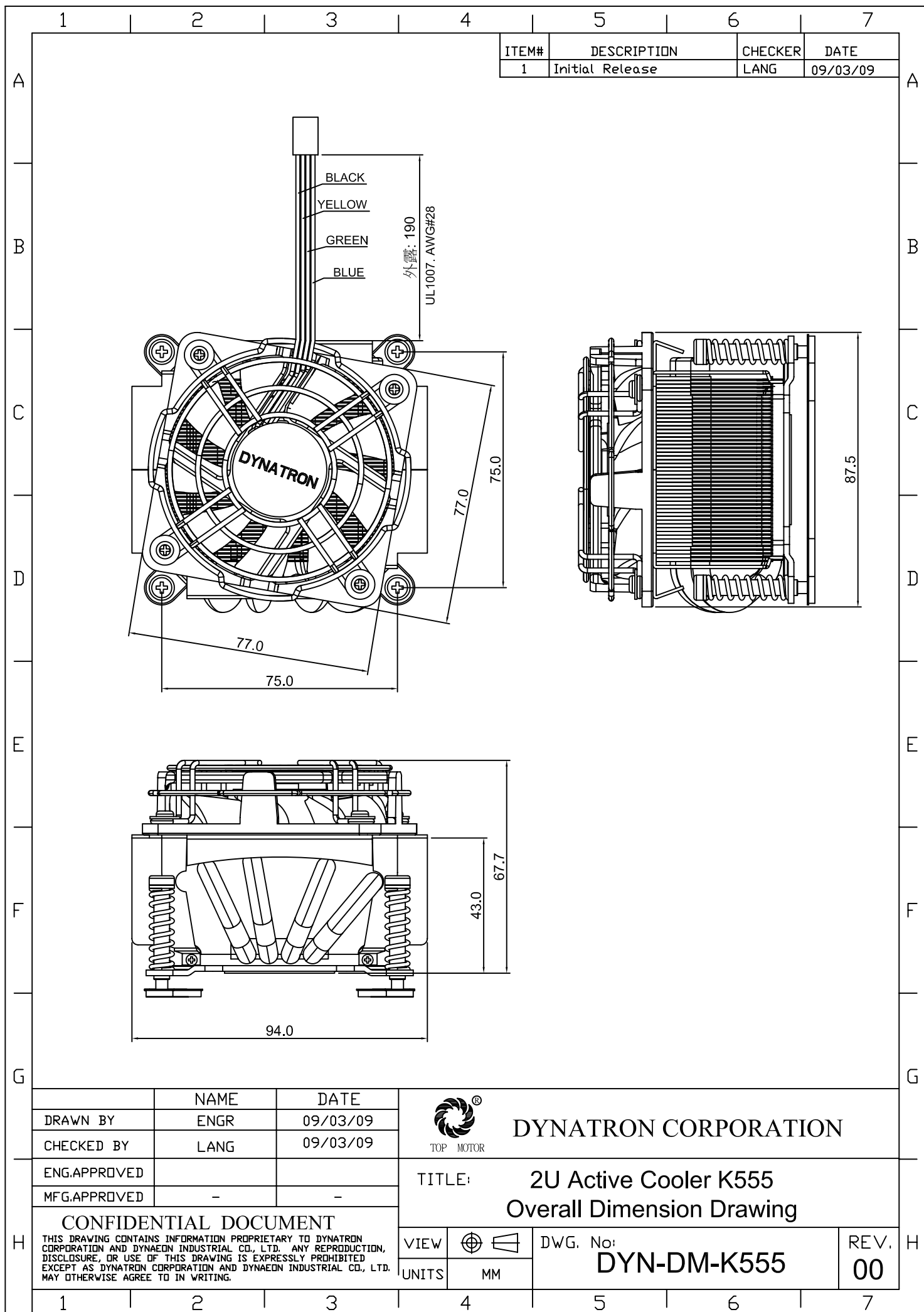
- Rated Airflow:
 - At Duty Cycle 0~20%: 10.12 CFM
 - At Duty Cycle 50%: 25.30 CFM
 - At Duty Cycle 100%: 45.56 CFM
- Rated Static Pressure:
 - At Duty Cycle 0~20%: 0.185mm-H₂O
 - At Duty Cycle 50%: 1.156mm-H₂O
 - At Duty Cycle 100%: 3.746mm-H₂O
- Rated Acoustical Noise:
 - At Duty Cycle 0~20%: 13.14 dBA
 - At Duty Cycle 50%: 33.04 dBA
 - At Duty Cycle 100%: 45.8 dBA
- Lead Wire Pin Out:
 - Pin#1-Black(-)
 - Pin#2- Yellow(+)
 - Pin#3- Green(Tachometer/ Signal Output)
 - Pin#4- Blue (PWM)

Performance Chart, K555 Thermal Resistance & Noise VS. Cooling Fan Speed



9/11/2009

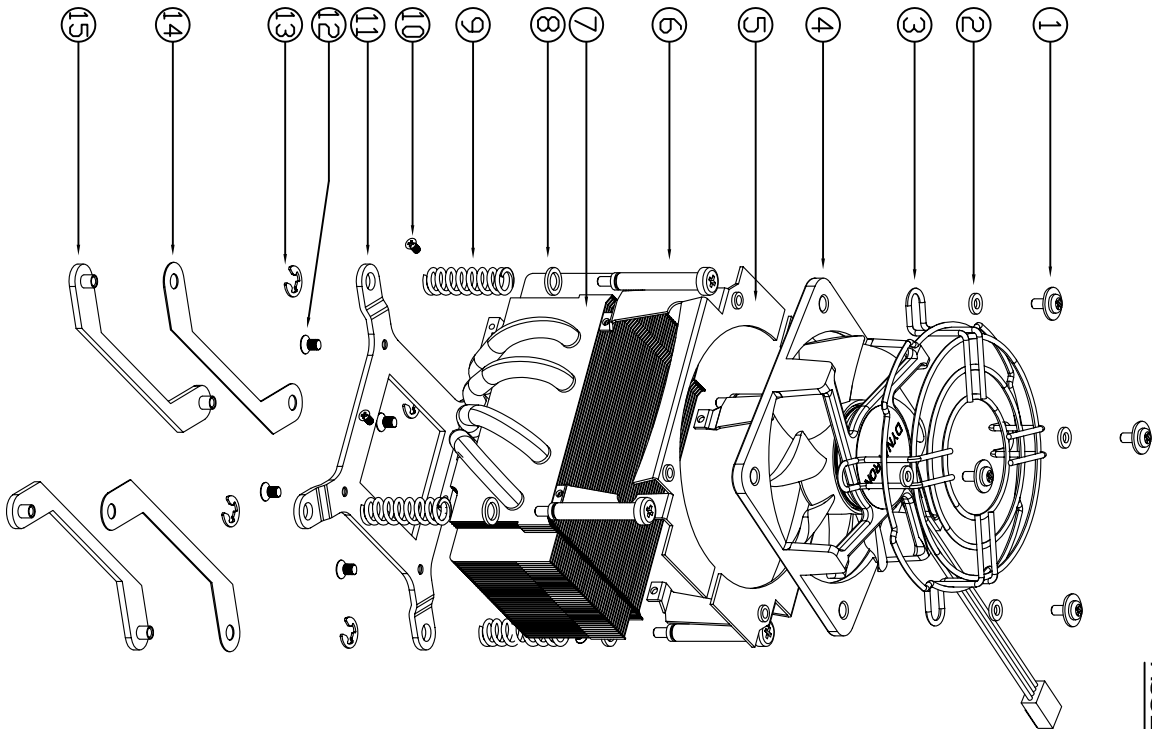
Lang



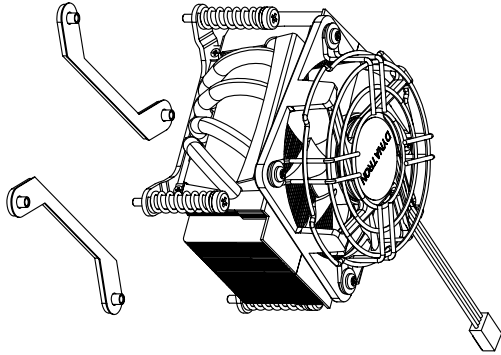
CONFIDENTIAL DOCUMENT

THIS DRAWING CONTAINS INFORMATION PROPRIETARY TO DYNATRON CORPORATION AND DYNATECH INDUSTRIAL CO., LTD. ANY REPRODUCTION, DISCLOSURE, OR USE OF THIS DRAWING IS EXPRESSLY PROHIBITED EXCEPT AS DYNATRON CORPORATION AND DYNATECH INDUSTRIAL CO., LTD. MAY OTHERWISE AGREE TO IN WRITING.

ASSEMBLY PARTS



WHOLE SET OF COOLER



WHOLE PIECE OF BACK STRIP

ITEM#	DESCRIPTION	CHECKER	DATE
1	Initial Release	LANG	09/03/09

ITEM#	DESCRIPTION	MATERIAL	QTY.
15	BACK STRIP	SPCC	2
14	INSULATOR	FORMEX GK-17	2
13	C-RING	STEEL	4
12	SCREW, CLIP	STEEL	4
11	CLIP	STEEL	4
10	SCREW, COVER	STEEL	4
9	SPRING	SUS 304	4
8	WASHER	STEEL	4
7	HEATSINK	ALUMINUM FIN + HEATPIPE	1
6	SCREW, HEATSINK	STEEL	4
5	COVER, FAN	AL5052	2
4	FAN, 77*77*20	PLASTIC	1
3	FAN GUARD	STEEL	1
2	WASHER	PLASTIC	4
1	SCREW, FAN GUARD	STEEL	4

NOTES:

1. THE FIGURE IS FOR REFERENCE ONLY, AND NOT FOR SCALE
2. OVERALL DIMENSION: 94.0 x 87.5 x 67.7mm
3. HEATSINK DIMENSION: 94.0 x 87.5 x 43.0mm

DATE	NAME	TITLE
09/03/09	ENGR	2U Active Cooler K555
09/03/09	LANG	BOM & Exploded Assembly Drawing
CHK. APPL.		
ENG. APPL.		
DATE		
COMMENTS		

DWG. No:	DYN-EP-K555	REV	00
----------	-------------	-----	----