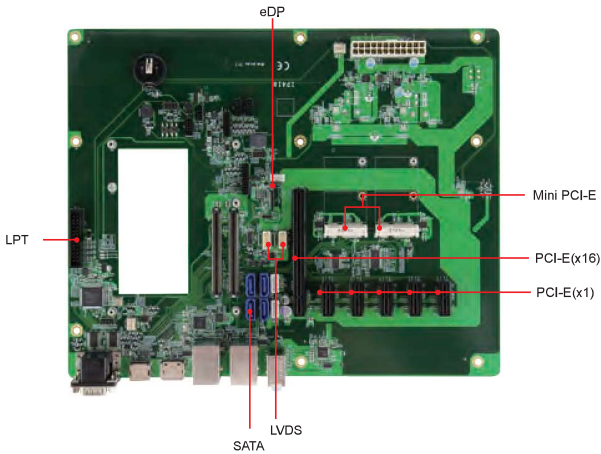


IP418

Carrier Board COM Express Type 6 (R3.0) Carrier Board

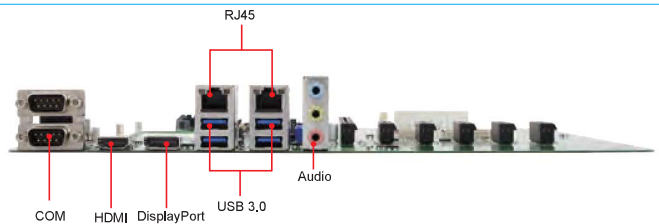
NEW



Features

- ATX form factor with PICMG COM.0 R3.0 Type 6 pin out
- Supports 1x VGA, 1x DisplayPort, 1x HDMI, 1x DVI-D
- Supports 1x eDP or 1x LVDS
- 1x PCI-E (x16), 5x Mini-PCI-E(x1), 2x Mini PCI-E sockets
- ATX power connector / DC-in (12V only)

I/O View



Specifications

Form Factor	ATX
Module Interface	COM Express Type 6 (R3.0)
Expansions slots	1x PCI-E(16x) slot 5x PCI-E(1x) slot
Mini Type slots	2x MiniPCI-E socket
Video Output	1x VGA 3x DDI (1x DisplayPort, 1x HDMI, 1x DVI-D) 1x dual channel LVDS or 1x eDP (Depends on CPU module)
Ethernet	LAN1: Derived from COM Express CPU module LAN2: 1x Intel® I210IT
I/O Chip	Fintek F81964D-I
Serial Port	2x COM ports (RS232)
USB 2.0	4x USB 2.0
USB 3.0/ 3.1	4x USB 3.0
Serial ATA	Derived from COM Express CPU module 4x SATA III
Audio	Onboard ALC662 w/ 5.1 CH audio
Digital I/O	4-in/4-out
Watchdog	256 levels
KB/MS	N/A
Parallel	1x Parallel port via box header
Dimensions (L X W)	305mm x 244mm (12" x 9.6")
Power	ATX/ DC-IN 12V (only) 20+4-pin connector for ATX 2x 2-pin connector for 12V DC power-in (IP418-DC only)
Operating Temperature	-40°C~85°C (-40°F~185°F)
Storage Temperature	-40°C~90°C (-40°F~194°F)
Relative Humidity	10% ~ 90% (non-condensing)

Ordering Information

IP418	COM Express Type 6 Carrier Board, supports ATX
IP418-DC	COM Express Type 6 Carrier Board, supports DC-in

Dimensions and Drawing

