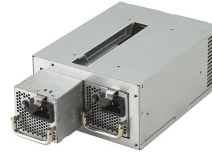


DESCRIPTION

FSP400-70RGHBB1 is an industrial level of switching power supply. The power supply comes to offer the total power capacity up to 400 Watts, and uses unique active PFC (Power Factor Correction) circuit design with its high-load electrical components, makes it to be perfectly used in an industrial environment. In addition, with its full range of input and output electrical features, the power supply is ideally the best choice for server, workstation, communication or any other automation applications to use. The product also complies with the latest safety and EMC standards, which is perfectly to meet various regulations worldwide.



APPLICATION

For standard, advanced server and storage power system.

FEATURES

- Remarkable power density
- Excellent redundant PSU efficiency
- Well working performance at 50°C (24 house running)
- Low ripple and noise
- Support OTP, OVP, OCP and SCP circuit protection
- Comply with FCC, CB, TUV, CE and CCC certification or declaration requirement

WATTAGE

Wattage: 400W

DIMENSION

Dimension: 190mm(L) x 150mm(W) x 86mm(H)

PRODUCT HIGHLIGHT

Efficiency Level: 80PLUS Gold
Altitude: 5000M
PMBus: For standard, advanced server and storage power system.

INPUT SPECIFICATION

Input Range: 90-264 Vac
Input Frequency: 47-63 Hz
Input Current: 115V@ 8.0 Amps-rms maximum,
 230V@ 4.0Amps-rms maximum

GENERAL SPECIFICATION

Voltage Regulation: +3.3V, +12V, +5V, +5SB: ±5%
 -12V: ±10%

SAFETY STANDARD APPROVAL



OUTPUT SPECIFICATION

Hold up Time: 115V/60Hz 17mSec.
 Minimum@100% Load,
 230V/50Hz 17mSec.

Output Voltage Regulation: Minimum,@100% Load
 +3.3Vdc output : +3.9 Vdc minimum, + 4.5Vdc maximum
 +5Vdc output : +5.7 Vdc minimum, + 6.5Vdc maximum
 +12Vdc output : +13.3 Vdc minimum, + 14.5Vdc maximum

Output Rise Time: 115V-rms/230V-rms 5V
 20ms Maximum
 115V-rms/230V-rms 12V
 20ms Maximum

Ripple & Noise: 3.3V:50mV p-p
 5V:50mV p-p
 12V1:120mV p-p
 12V2:120mV p-p
 12V3:120mV p-p
 -12V:200mV p-p
 5Vsb:50mV p-p

ENVIRONMENTAL SPECIFICATION

TEMP.Range: Storage Temperature: -20°C to + 80°C

Humidity Operating : 5% to 90% RH, Non-condensing
 Storage :5 % to 90% RH, Non-condensing

MTBF: Using Bellcore, the calculated MTBF> 100,000 hours of continuous operation at 25°C nominal input

*Output Voltage and Current Rating

	+3.3V	+5V	+12V1	+12V2	+12V3	-12V	+5Vsb
Ripple-Noise(R-P) mV	50mV	50mV	120mV	120mV	120mV	200mV	50mV
Regulation Load %	±5%	±5%	±5%	±5%	±5%	±10%	±5%
Output Max.(A)	20A	20A	16A	16A	16A	0.5A	3A
Output Min.(A)	0A	0A	0A	0A	0A	0A	0A

NOTES

- Maximum continuous total DC output power should not exceed 400W.
- Maximum continuous combined load on +3.3VDC and +5VDC outputs shall not exceed 130W.

This content is subject to change, please refer to specification for more detail.
 FSP reserve the right to change the content without prior notice