

# ID00H-A238/ID00H-A320

ARM-Based i.MX8M  
Outdoor Sunlight Readable All-in-One Panel PC

## Outdoor Series 23.8" 32"



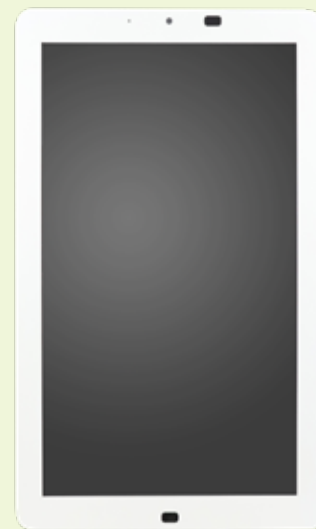
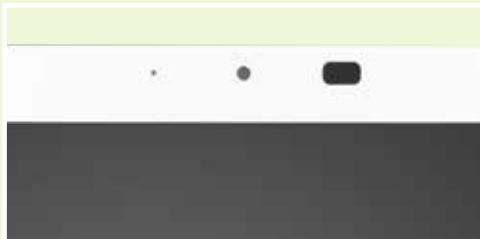
### I/O View



### Features

- NXP iMX.8M platform
- Sunlight readable, portrait mode
- Auto-dimming backlight control

- IP65 front-panel waterproof protection
- Anti-scattering front side glass



# ID00H-A238/ID00H-A320

## Specifications

Model No.		ID00H-A238	ID00H-A320	
Display & Touch Screen	Display Size	23.8"	32"	
	Max. Resolution	1080 x1920	1080 x1920	
	Luminance (cd/m2)	1,000	1,000	
	Contrast	1000:1	3000:1	
	Max. Color	16.7M	16.7M	
	View Angle (H/V)	178/178	178/178	
	Backlight Lifetime(hrs)	50,000	60,000	
	Touch Type	Projected capacitvie	Projected capacitvie	
	Touch Interface	USB	USB	
	Light Transmission (%)	70	70	
	Point of touch	10	10	
I/O Interface	USB 3.0	None	None	
	USB 2.0	1x M12 4-pin D code	1x M12 4-pin D code	
	RS-232/422/485 Selectable in BIOS	None	None	
	RS-232	1x M12 8-pin A code	1x M12 8-pin A code	
	LAN	1x M12 8-pin X code	1x M12 8-pin X code	
	Additional Graphics	None	None	
	Audio	None	None	
	Digital I/O	None	None	
	Power Connector	1x M12 4-pin A code	1x M12 4-pin A code	
	Power Button	IP65 push button	IP65 push button	
Mechanical	Dimensions (mm)	362 x 610 x 65.3	468 x 815 x 73.2	
	Net Weight (kgs)	TBD	TBD	
System	Processor	NXP IMX.8M Quad Core 1.3GHz		
	Memory	3GB LPDDR4		
	Thermal Design	Internal fan		
	Membrane Control	Dimming control		
	Built-in Speaker/MIC	Optionalal		
Expansion	Internal Expansion Bus	None		
	Expansion Slot	None		
	Wireless	Optionalal		
Storage Space	HDD	Onboard 16GB eMMC		
	Removable	None		
Power	Power Input Range	DC 12V~24V		
Construction	Chassis Material	Metal		
	Color (Front/Back)	White/White		
	IP Rating	IP65		
	Mounting	VESA 100x 100	VESA 100x100/200x200	
Environmental	Operating Temperature	-10~50°C	-10~50°C	
	Storage Temperature	-30~85°C	-30~85°C	
	Storage Humidity	0~90% @40°C		
	Certification	CE/FCC		
	Supported Operating Systems	Yocto V2.5 Android 9		

Vertical Applications Panel PC

Stainless Steel Panel PC

All-in-one Panel PC with Risier Card Expansion

Compact Panel PC

Heavy-duty Industrial Panel PC

OPF FRAME PC

ARM-Based Panel PC

Panel PC motherboard

# IDO0H-A238/IDO0H-A320

## Dimensions

### IDO0H-A238



### IDO0H-A320



## Ordering Information

IDO0H-A238PC	23.8" ARM based AIO, NXP iMX.8M quad core processor, projected capacitive touch screen, enhanced glass, IP65
IDO0H-A238G	23.8" ARM based AIO, NXP iMX.8M quad core processor, no touch screen, enhanced glass, IP65
IDO0H-A320PC	32" ARM based AIO, NXP iMX.8M quad core processor, projected capacitive touch screen, enhanced glass, IP65
IDO0H-A320G	32" ARM based AIO, NXP iMX.8M quad core processor, no touch screen, enhanced glass, IP65

Vertical Applications Panel PC  
Stainless Steel Panel PC  
All-in-one Panel PC with Risser Card Expansion  
Compact Panel PC  
Heavy-duty Industrial Panel PC  
OFP FRAME PC  
ARM-Based Panel PC  
Panel PC motherboard