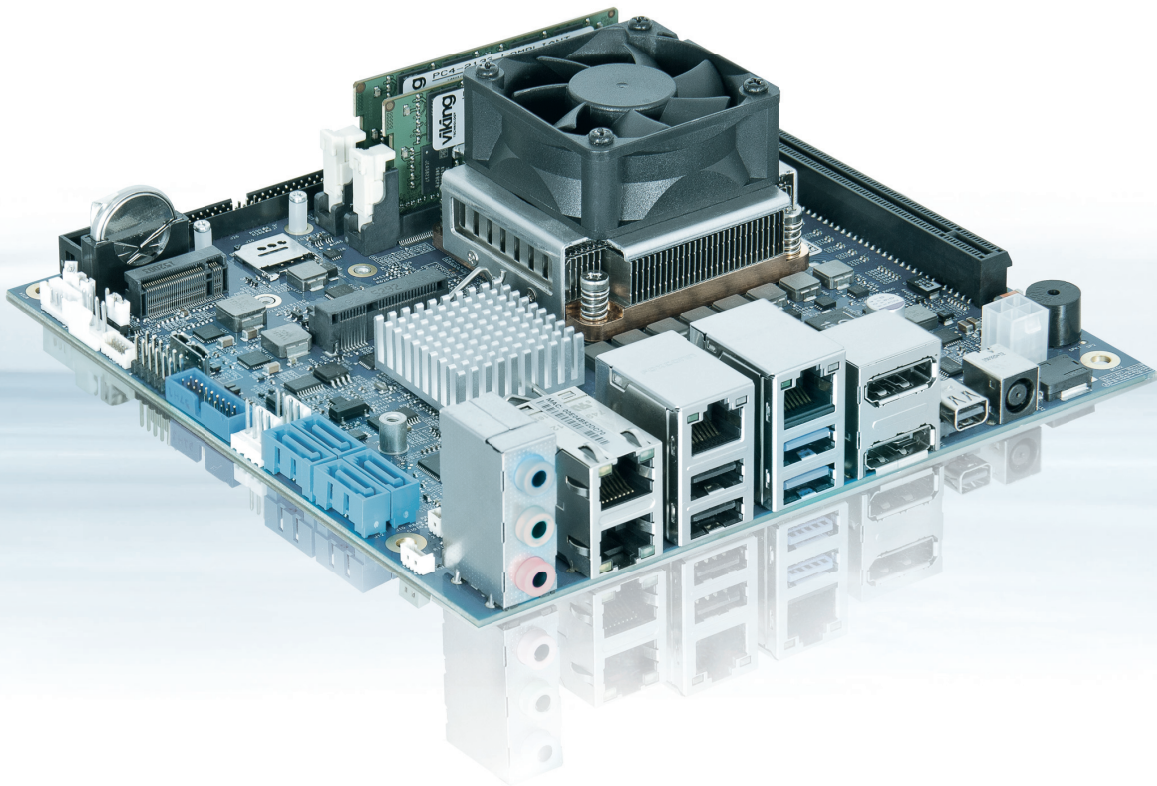


# mITX-SKL-H

---



## EMBEDDED mITX MOBILE MOTHERBOARD WITH 6th GENERATION Intel® 14NM Quad Core™ I5/I7, Xeon® E3, Celeron® CPUS

- ▶ long term available Embedded mITX mobile class motherboard
- ▶ Intel® HD graphics with 3 independent ports, LVDS option
- ▶ SO-DIMM Socket DDR4-2133 Memory (up to 32 GByte)
- ▶ TPM 2.0 and hardware security device to protect applications and licensing
- ▶ up to 4 GBE RJ45 Ethernet LAN ports

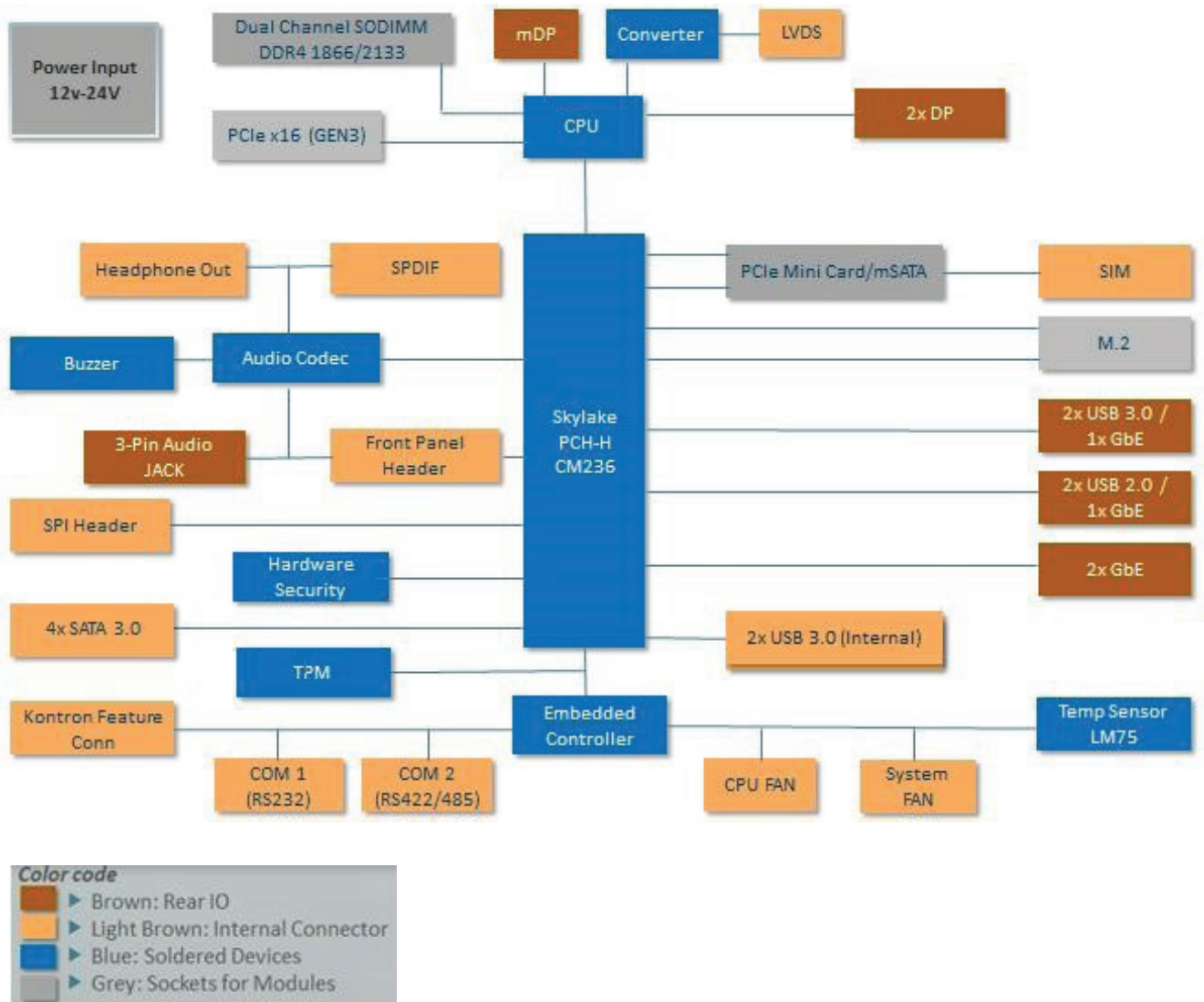
# mITX-SKL-H

## TYPICAL APPLICATIONS

- ▶ POS/POI: Higher Graphics and CPU core performance, Low power, multi display support
- ▶ Medical/Connectivity: Higher Graphics and CPU core performance, longevity
- ▶ Industrial Automation: Wide range of I/Os, compact size, longevity
- ▶ Digital signage: Multi display support, low power, wide range of I/Os
- ▶ Future-oriented Devices: Display Port and LVDS, low power, compact size

The mITX-SKL-H-CM236 is part of the Security Solution Product Line. The motherboard is prepared for Application Protection, License Creation, Delivery, Management and Tracking, Implementation of license models as well as the assignment of privileges and access levels.

### ▶ BLOCK DIAGRAM mITX-SKL-H



## ▶ TECHNICAL INFORMATION

PROCESSOR	Intel® Xeon® E3, Core™ i7/i5, Celeron® G3900E
MEMORY	2x DDR4 SODIMM 2133 MHz (up to 32 GByte)
GRAPHICS INTERFACE	3x Independent Displays (2x DP; 1x LVDS)
SPECIAL	TPM2.0, hardware security device, M.2 (2280, Socket 3, M-Key), SPI Fast Interface, SIM
SATA PORTS	4x SATA Gen 3.0
MPCIe / MSATA SLOT	1x Mini-PCIe with USB 2.0/PCI/SATA and external to SIM
SERIAL PORTS	1x RS232; 1x RS485 Half duplex / RS422
LAN PORTS	4x Ethernet on front IO Gigabit-LAN (10/100/1000 MBit ), 2x optional
USB PORTS	2x USB 3.0 (Internal) + 1x USB 3.0 (Client) + 2x USB 3.0 (Rear I/O) + 2x USB 2.0 (Rear I/O) + 2x USB 2.0 (Front Header) + 1x USB 2.0 (mPCIe)
AUDIO	HD Analog audio interface (Line-In, Line-Out, Mic-In, SPDIF)
PCIe SLOTS	1x PCIe x16 (Gen 3)
TPM	TPM2.0, Hardware Security Device
POWER SUPPLY	12/24 V
MTBF	tbd
SAFETY	IEC 60950-1: 2005, 2nd Edition UL 60950-1, CSA C22.2 No. 60950-1
COOLING SOLUTIONS	Passive and active cooling solutions
OPERATING TEMPERATURE	0 °C to 60 °C
REGULATORY	Comply with Emission: EN55022
DIMENSIONS	Thin Mini-ITX, 170 x 170 mm
OPERATING SYSTEMS	Win7, Win8.1, Win10, WES7, Linux
BIOS	AMI Aptio® V UEFI
SUPPORTED MODULES	mITX-SKL-H 81067X-45XX

## ▶ CORPORATE OFFICES

### EUROPE, MIDDLE EAST & AFRICA

Lise-Meitner-Str. 3-5  
86156 Augsburg  
Germany  
Tel.: + 49 821 4086 0  
Fax: + 49 821 4086 111  
info@kontron.com

### NORTH AMERICA

14118 Stowe Drive  
Poway, CA 92064-7147  
USA  
Tel.: + 1 888 294 4558  
Fax: + 1 858 677 0898  
info@us.kontron.com

### ASIA PACIFIC

1-2F, 10 Building, No. 8 Liangshuihe 2nd Street,  
Economical & Technological Development Zone,  
Beijing, 100176, P.R.China  
Tel.: +86 10 63751188  
Fax: +86 10 83682438  
info@kontron.cn