



T17

2U Active Air Cooler

PRODUCT SPECIFICATIONS

Table of Contents

1. PRODUCT DESCRIPTION	2
2. THERMAL PERFORMANCE CURVE.....	4
3. DIMENSION DRAWINGS.....	5

T17 | Socket sWRX8/sTRX4/TR4/SP3

Model Number: T17

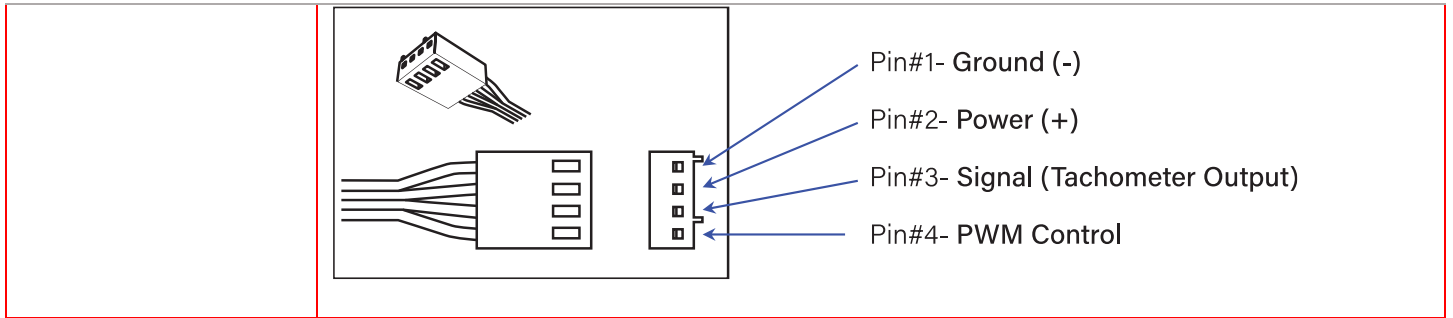
- AMD® Socket sWRX8, sTRX4, TR4 and SP3
- Active side-blow cooler for 2U Server and up

Overall Specification

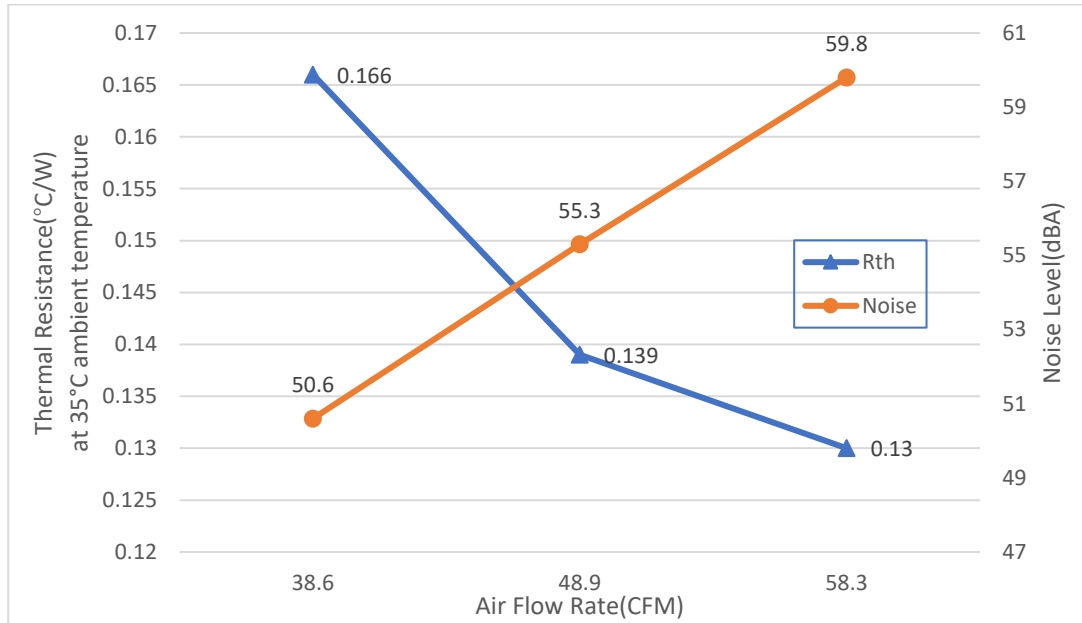
Dimension	119 x 79 x 66 mm
Weight	463 g
Material	Aluminum Heatsink with Heatpipe Embedded
Fan	6025 Axial PWM Fan for Heat Exhausting
Mounting Method	Convenient Heat Sink Screw Captive Mounting
Thermal Grease	Shin-Etsu 7762 pre-printed
TDP	Support CPU Power up to 280 Watts Heat Dissipation

Fan Specification

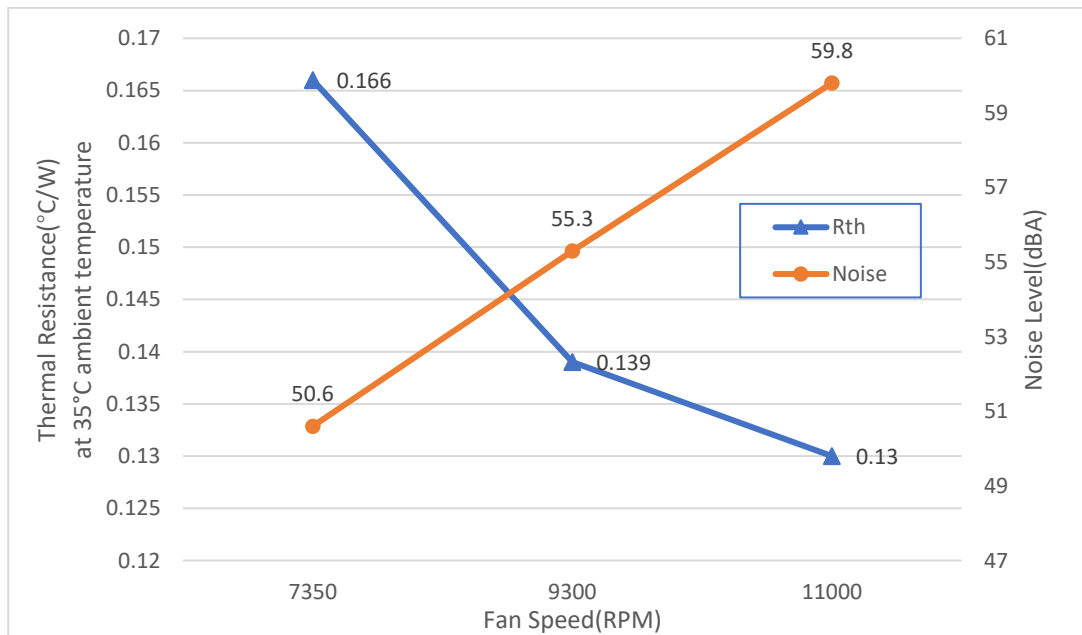
Model Number	DF126025BU - PWMH
Dimension	60 x 60 x 25 mm
Bearing	Double Ball
Rated Voltage	12V
Rated Speed	At Duty Cycle 0~20%: 2300 ± 10% RPM At Duty Cycle 50%: 5400 ± 10% RPM At Duty Cycle 100%: 11000 ± 10% RPM
Input Power	At Duty Cycle 0~20%: 0.84 W At Duty Cycle 50%: 2.76 W At Duty Cycle 100%: 18.0 W
Maximum Airflow	At Duty Cycle 0~20%: 11.91 CFM At Duty Cycle 50%: 28.38 CFM At Duty Cycle 100%: 58.31 CFM
Rated Static Pressure	At Duty Cycle 0~20%: 1.48 mm-H2O At Duty Cycle 50%: 7.54 mm-H2O At Duty Cycle 100%: 28.8 mm-H2O
Acoustical Noise	At Duty Cycle 0~20%: 25.8 dBA At Duty Cycle 50%: 44.4 dBA At Duty Cycle 100%: 59.8 dBA
Lead Wire Pin Out	Pin#1- Black(-) Pin#2- Yellow(+) Pin#3- Green(Tachometer/ Signal Output) Pin#4- Blue (PWM) Lead Wire Pin Out Diagram :

T17 | Socket sWRX8/sTRX4/TR4/SP3

Performance Chart: Active Cooler T17 Thermal Resistance Cooling Performance vs. Airflow

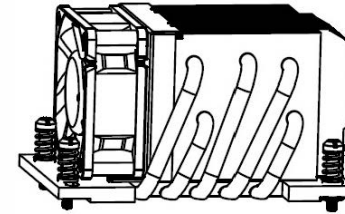
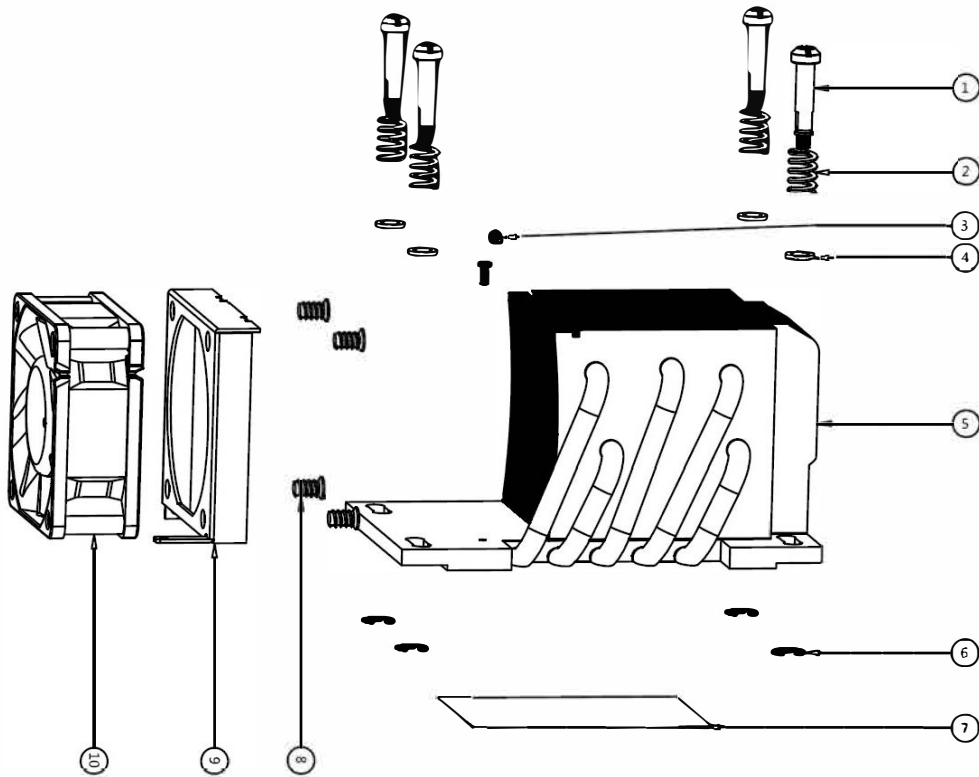


Cooling Performance vs. Fan Speed



This drawing contains Top Motor technology co.,Ltd. proprietary information. Any reproduction, disclosure, or use of this drawing is restrickly prohibited except as Top Motor technology co.,Ltd. otherwise agrees to in writing.


FileNo	ITEM#	DESCRIPTION	CHECKER	DATE
EP-***	01	首次发行!		2021.4.20
	02			



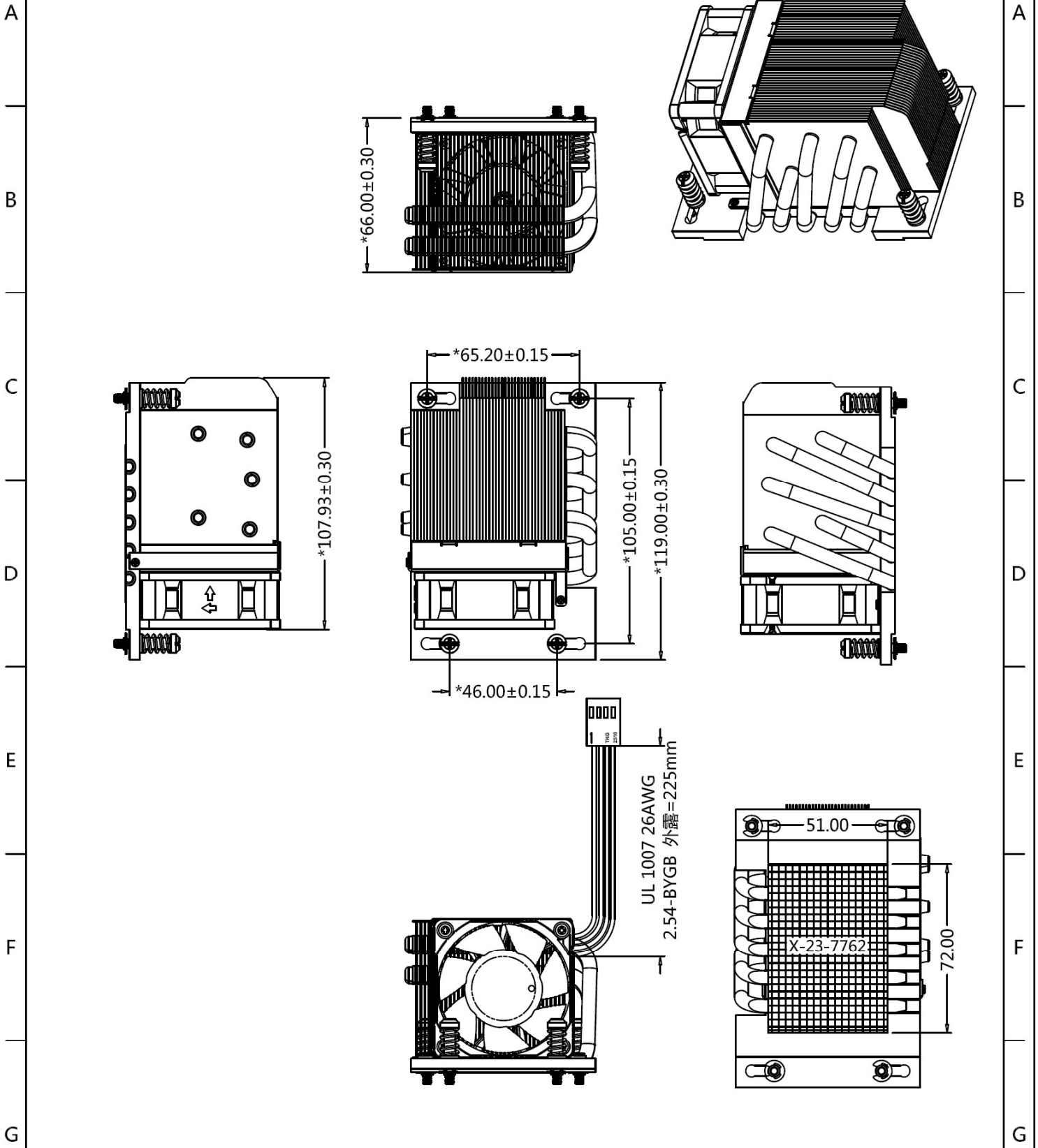
10	LE06250019	Fan(6025-11000RPM)	PBT	1
9	5130xxxx	Cover	AL5052	1
8	50900380	Screw	Steel	4
7	30900120	Thermal Grease	X-23-7762	72*51
6	51900010	C-Ring	Steel	4
5	5080xxxx	Heatsink	AL+HP	1
4	52000030	Washer	Steel	4
3	50901620	Screw	Steel	2
2	50600950	Spring	SWP	4
1	50904380	Screw	Steel	4
ITEM NO.	ITEM NO.	DESCRIPTION	MATERIAL	QTY.

Note:


- 1.The figure is for reference only,and not for scale,
- 2.Over all dimension: 119.0x79.0x66.0mm,
- 3.Heat sink dimension: 119.0x79.0x66.0mm,

	NAME	DATE	 Top Motor Technology Co.,Ltd.	
DRAWN		2021.4.20	TITLE: Exploded Assembly Drawing T17	
CHECKED				
ENG. APPR.				
COMMENTS:	N/A		DWG. No: DYN-EP-T17_R0	REV A

FileNo.:DM-***



	NAME	DATE
DRAWN BY		2021.4.20
CHECKED BY		
ENG.APPROVED		


Top Motor Tecnoogy Co., Ltd

TITLE: **T17 Assembly Dimension**

This drawing contains Dynatron Corporation proprietary information. Any reproduction, disclosure, or use of this drawing is restrickly prohibited except as Dynatron Corporation otherwise agrees to in writing.

VIEW	
UNITS	MM

DWG. No:	DYN-DM-T17_R0
----------	---------------

REV.	A
------	---