

innodisk

EV2U-SGR1

USB Fixed Focus Camera Module

User Manual



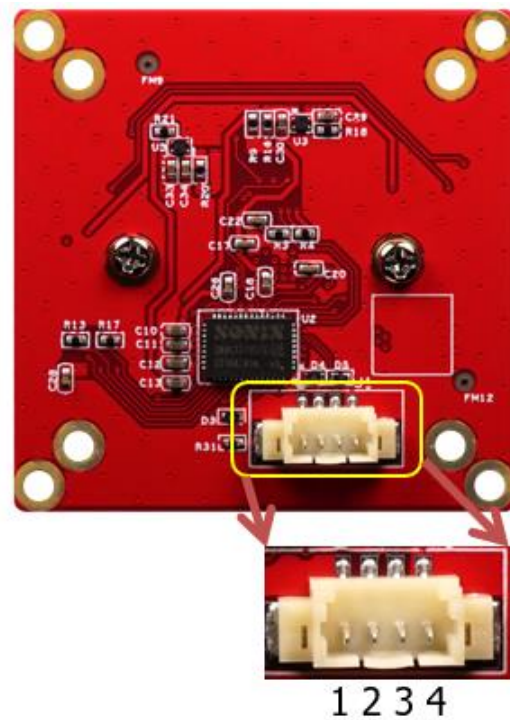
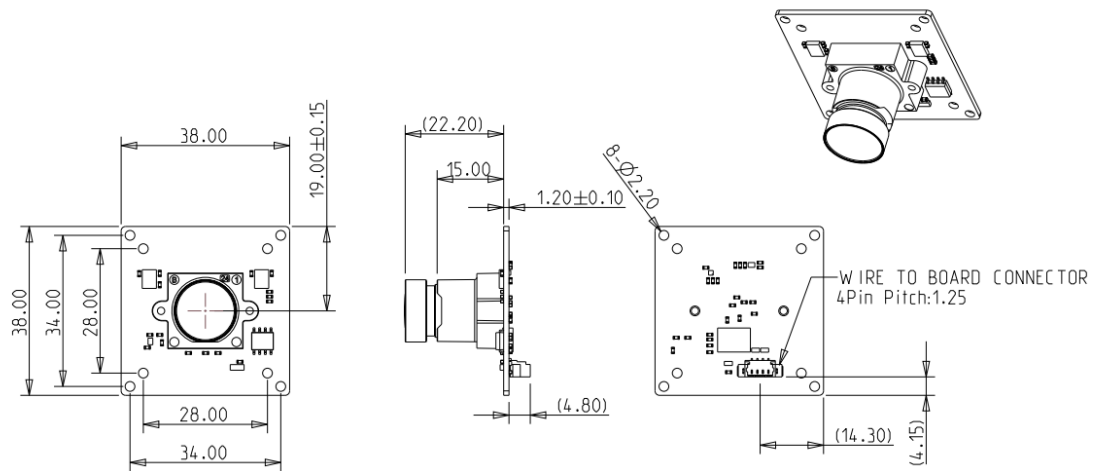
TABLE OF CONTENTS

1. Release History	3
2. Dimension & connector pindefine	4
3. Image Capture Guidance	
3.1 Hardware setup	5
3.2 Windows Users	7
3.3 Linux Users.....	8
CONTACT US	9

1. Release History

Date	Comment	Author
2022/11/11	1 st version	Malcolm Chen

2. Dimension & connector pin define

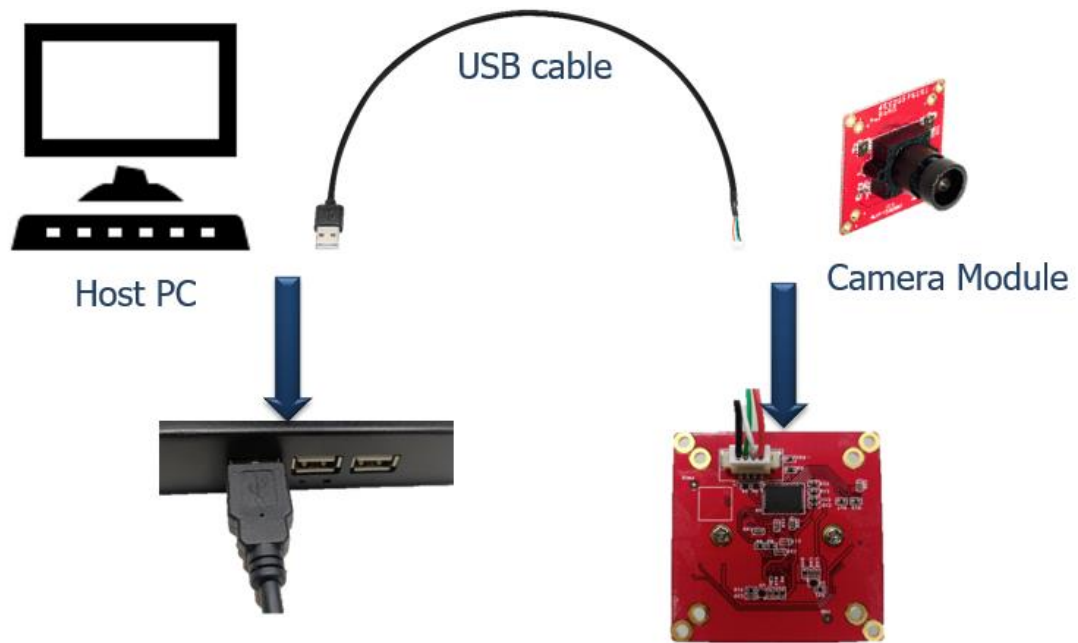


Pin#	Signal	Description
1	DCC	+5V
2	D-	Data-
3	D+	Data+
4	GND	Ground

3. Image Capture Guidance

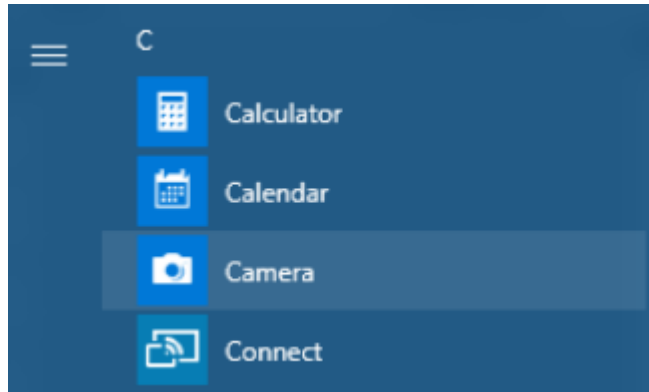
3.1 Hardware setup

To connect camera to host PC via USB cable



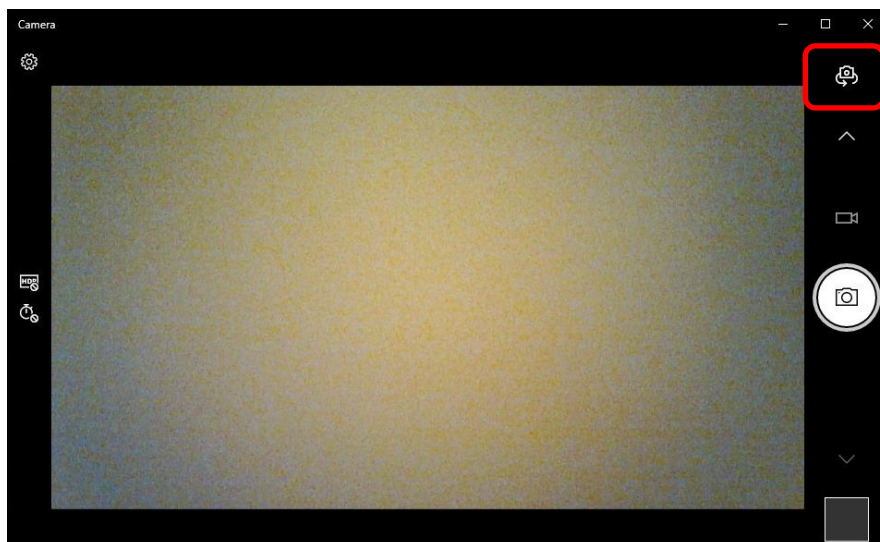
3.2 Windows Users

To find the Camera app, select **Start** > **Camera**.

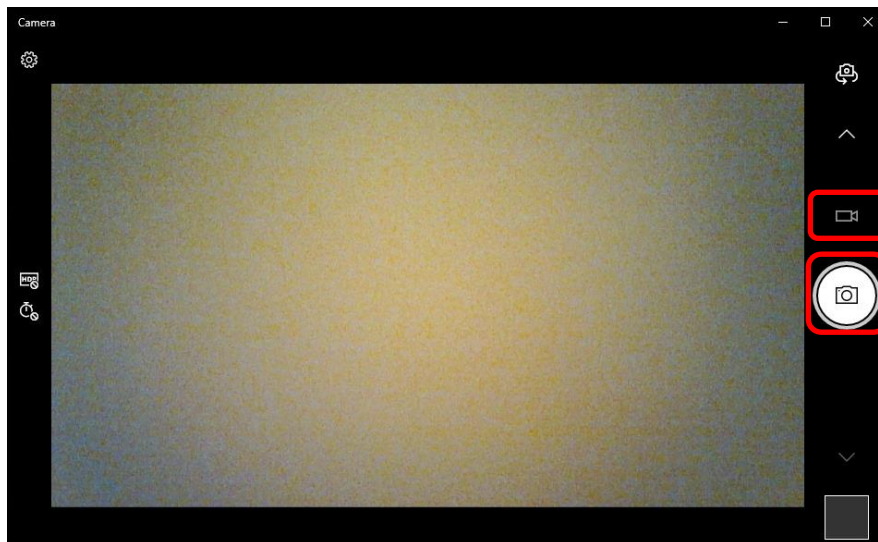


After you open the Camera app:

1. Click icon to find the right camera, this icon appear only if you have multiple camera plugin.



2. Select **Photo** or **Video** , then select it again to take a picture or start a video. If you are making a video, select **Video** again to finish recording.



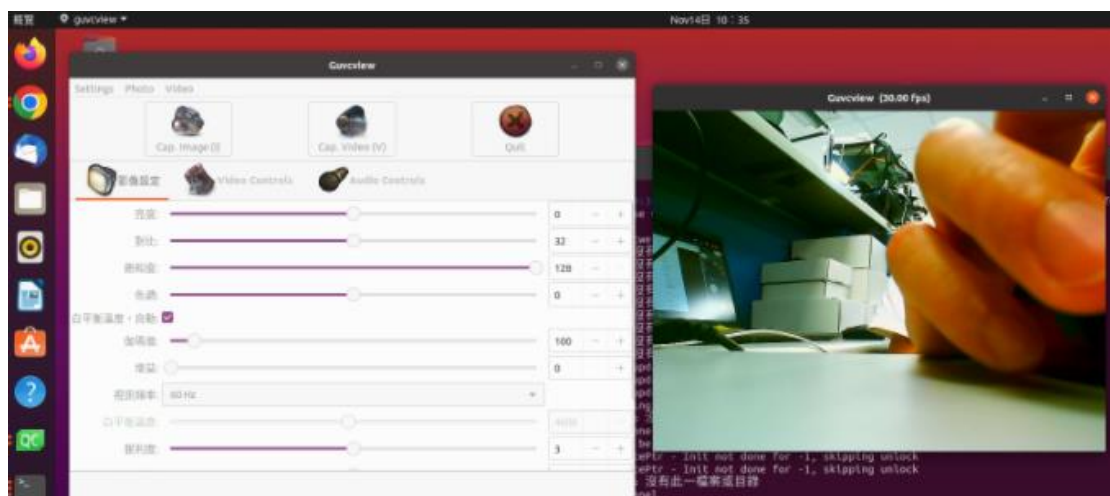
3.3 Linux Users

Install guvcview

```
sudo apt-get update  
sudo apt-get install guvcview
```

execute guvcview

```
guvcview
```



CONTACT US

Headquarters (Taiwan)

5F, No. 237, Sec. 1, Datong Rd., Xizhi Dist., New Taipei City 221, Taiwan

Tel: +886-2-77033000

Email: sales@innodisk.com

Branch Offices:

USA

usasales@innodisk.com

+1-510-770-9421

Europe

eusales@innodisk.com

+31-040-282-1818

Japan

jpsales@innodisk.com

+81-45-594-7581

China

sales_cn@innodisk.com

+86-755-21673689

www.innodisk.com

© 2015 Innodisk Corporation.

All right reserved. Specifications are subject to change without prior notice.

June 26, 2015