



Rear I/O

## Features

- Fanless system with IBASE MB230 customized board
- 9th/8th Gen Intel® Core™ i7/i5/i3 Desktop Processors
- Dual SIM slots supports WWAN redundancy
- 4x RJ45 Gigabit Ethernet port (2x Supports 802.3at PoE+)
- 3x M.2 (B-Key/E-Key/M-Key)
- Supports Over/Under/Reverse voltage protection
- iSMART, iAMT (11.6), TPM (2.0)
- 2x Flexible PCI-E / PCI expansion slot
- 2x 2.5" storage (supports RAID 0/1)

## Specifications

System Mainboard	MB230AF with Intel® Q370 PCH
CPU Type	9th/8th Gen Intel® Core™ i7/i5/i3 desktop processors
System Speed	Up to 4.00 GHz
Memory	2x DDR4-2666/2400 SO-DIMM, Max. 32GB
Front Panel External I/O	1x RS232/422/485 port for COM#1~COM#2 3x RS232 ports for COM#3~COM#4 2x RS232 ports for COM#5~6 from optional IP211/IP212 1x DisplayPort (1.2) 2x RJ45 Gigabit Ethernet port (supports 802.3at PoE+) 1x 5-pins DC-in terminal block type for 12V (±10%) or 18V (-10%)~24V (+10%) 2x Antenna holes 2x USB 2.0 from optional IP211/IP212/IP213 2x expansion slot
Rear Panel External I/O	1x DVI-D + HDMI(1.4) 4x USB3.1 ports 2x Antenna holes 2x RJ45 Gigabit Ethernet port + Dual USB3.1 stack ports 1x Red HDD LED 1x power button with Green LED indicator 1x 2-pin terminal block 2x SIM Card
Expansion Slots	2x Flexible PCI-E / PCI expansion slot 1x M.2 (B-Key supports USB2.0 for 4G/LTE) 1x M.2 (E-Key supports PCI-E + USB2.0 for CNVi)
Storage	2x 2.5" HDD/SSD 1x M.2 (M-Key supports PCI-E(4x) + SATA for NVMe SSD)
Construction	Aluminum & steel
Chassis Color	Silver & Gray
Mounting	Desktop & wall mount
Dimensions	210mm (W) x 285mm (D) x 129mm (H) 8.27" (W) x 11.22" (D) x 5.08" (H)
Weight	4.9 kg
Operating Temperature	-20°C to 70°C (-4°F~158°F) (for 35W CPU)

Storage Temperature	-20°C~80°C (-4°F~176°F)
Relative Humidity	5~90% @60°C, (non-condensing)
Vibration	Operating: 3Grms / 5~500Hz
Shock	Operating: 20G / 11ms Non-operating: 40G / 11ms
Certification	CE/ FCC ClassA/ LVD

## Ordering Information

AMI232AF (Supports Sierra module)	Fanless box System with MB230AF, w/ Intel® Core™ i7/i5/i3 desktop Processor, 6x COM (from IP211/ IP212) 4x COM (from IP213), 1x 8GB memory, 1x 2.5" 64GB MLC industrial-grade SSD, w/o power adaptor, optional riser card
AMI232-217	Fanless box System with MB230AF, w/ Intel® Core™ i5-8500T desktop Processor, 4x COM, 1x 8GB memory, 1x 2.5" 64GB MLC industrial-grade SSD, Riser card (IP217), w/o power adaptor
IP211 Riser Card Kit (optional)	IP211 (ZM05IP211---0B1000P) w/ COM cable (2x C501PK1H009302A00P) for AMI222/AMI232
IP212 Riser Card Kit (optional)	IP212 (ZM05IP212---0A1000R) w/ COM cable (2x C501PK1H009302A00P) for AMI222/AMI232
IP213 Riser Card Kit (optional)	IP213 (ZM05IP213---0A1000R) w/o COM cable for AMI222/AMI232
330W Power Adaptor Kit (optional)	330W (24V@13.75A) power adaptor kit compatible with IEC62368-1/EN62368-1
Optional Accessories	Global 4G antenna kit for Sierra Wireless EM7565 module, M.2 (M-Key 2280) Thermal kit

1 AGS Series

2 AMS Series

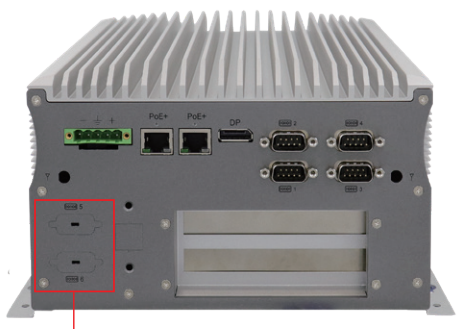
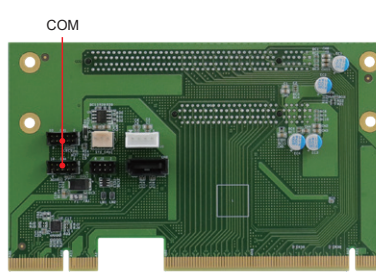
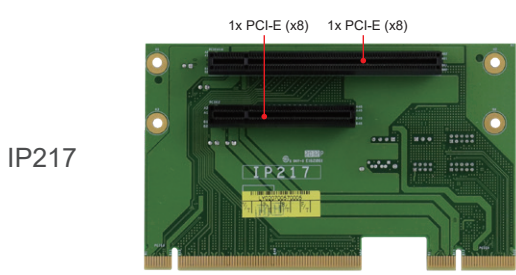
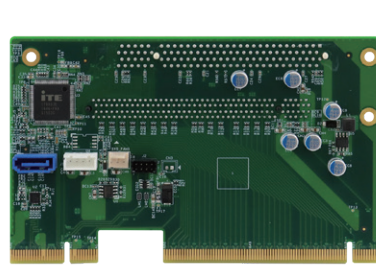
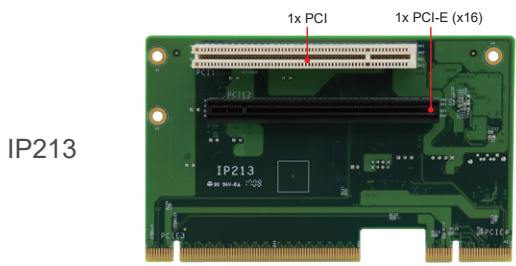
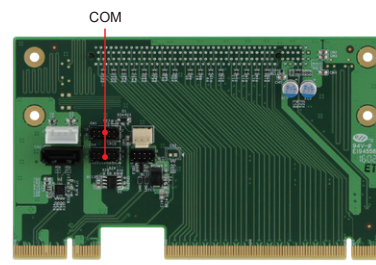
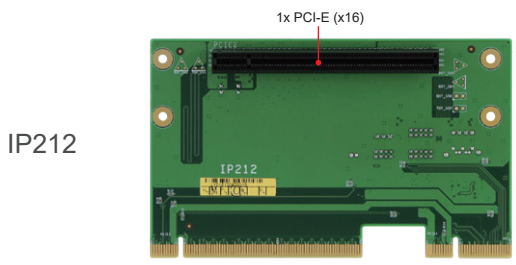
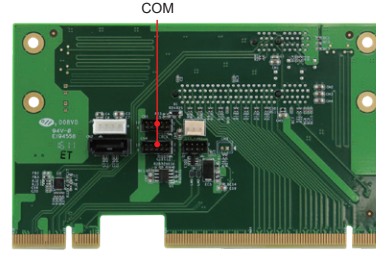
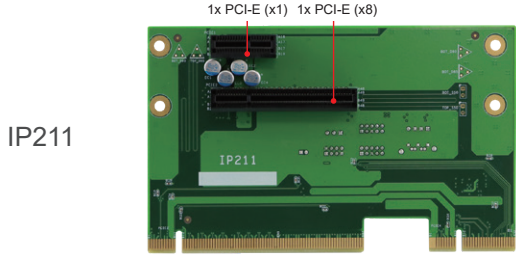
3 AMI Series

4 CMI Series

5 ASB Series

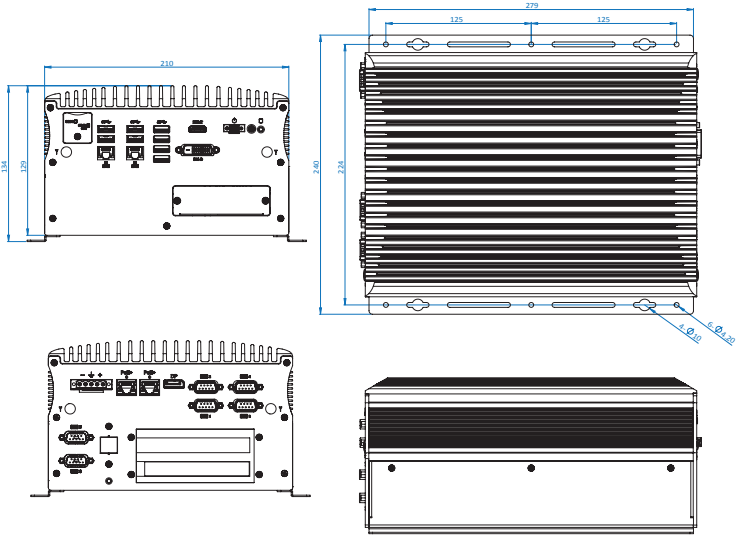
6 CSB Series

## Expansion Cards



COM#5-6 from IP211 & IP212 & IP217

## Dimensions and Drawing



Remarks: 1. Specifications are subject to change without prior notice. 2. ODM/OEM is available. 3. For user's manual & datasheet download, visit [www.ibase.com.tw](http://www.ibase.com.tw).

- 1 AGS Series
- 2 AMS Series
- 3 AMI Series
- 4 CMI Series
- 5 ASB Series
- 6 CSB Series