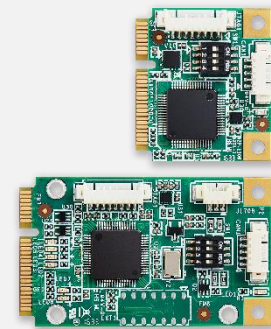


FARO-HP/FP CAN Bus mPCIe Card

Features

- Full or Half PCI Express Mini Card
- Compliant with CAN 2.0 A/B Specification
- 2-Channel Individual CAN and J1708 Interfaces
- CAN bus Baud Rate Setting: 125/250/500/800/1000Kbps
- Vehicle Communication Protocols: OBD-II, J1939 and J1708
- Built-in Programmable CAN Identifier Filtering
- Sensor Integrated: 3D Gyroscope, 3D Accelerometer
- Support Linux SocketCAN Driver



Introduction

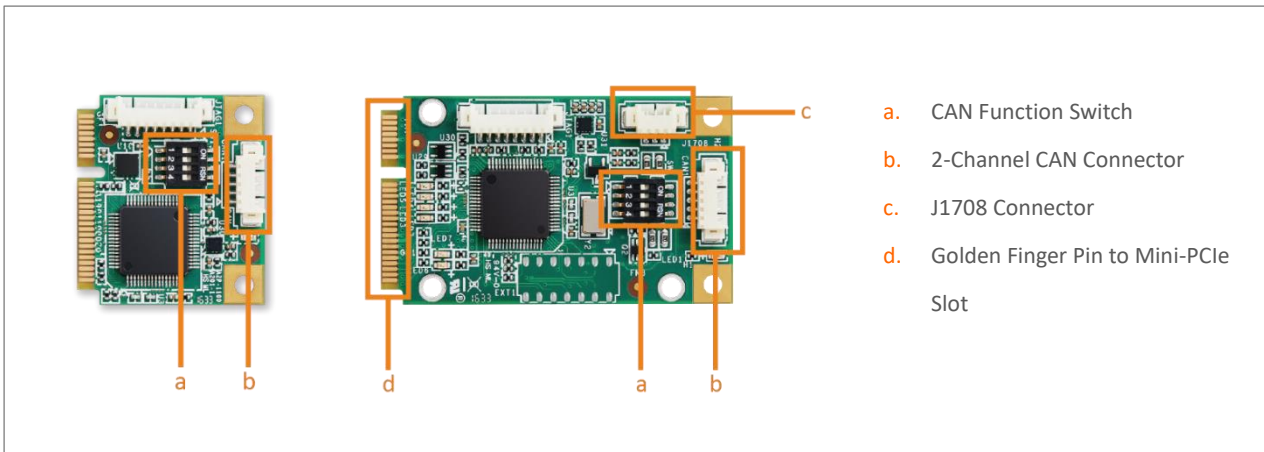
ANTZER TECH'S FARO Series can optionally support protocols from RAW CAN 2.0 a/ b, OBDII, J1939 to J1708. With FARO's SDK, your system is allowed to get Car, Truck, Bus, Crane, Harvester & other commercial vehicle information easily.

Other powerful advantages as independent dual CAN bus, Gyroscope/ Accelerometer on-board make FARO the ideal solution for the Fleet Management, Public Transit, Law Enforcement, Digital Signage Player, Vehicle Data Collection, Vehicle Tracking, Telematics System, and etc.

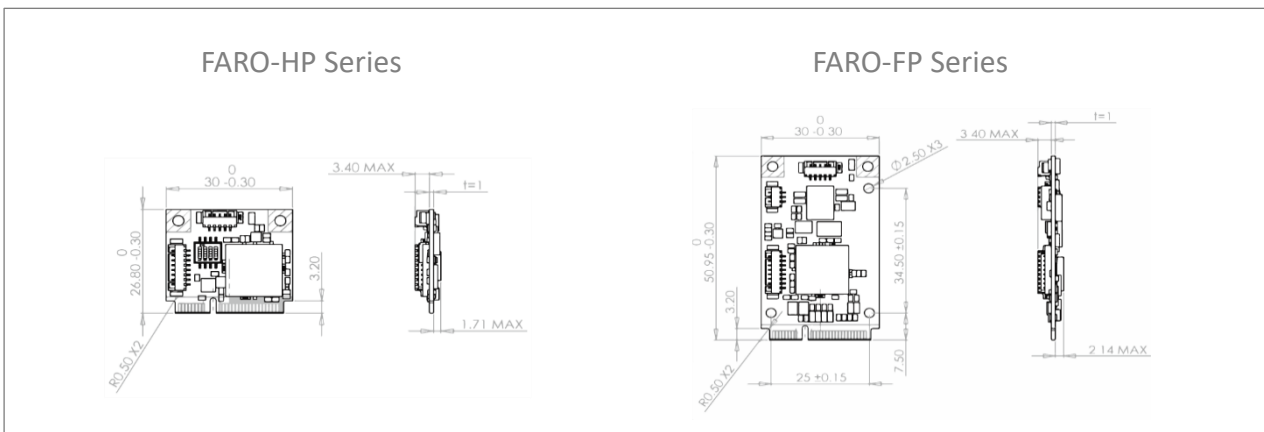
Specifications

Form Factor	Full or Half PCI Express Mini Card
Host Interface	USB 2.0 via PCI Express Mini Card Socket
Interface Number	CAN (ISO 11898) x 2 Individual Channels J1708 x 1 (FARO-FP900 Only)
Sensor	3D Gyroscope 3D Accelerometer 3D Magnetometer
Protocol	OBD-II, J1939 and J1708
Identifier filtering	Mask and Identifier List Mode
Driver Support	Microsoft Windows 7 / 8 / 8.1 / 10 Linux Ubuntu 16.04 LTS, Kernel 4.4 and Later SocketCAN (Source Code)
SDK Support	Microsoft Windows 7 / 8 / 8.1 / 10 Linux Ubuntu 16.04 LTS, Kernel 4.4 and Later
Operation Temp.	-40°C ~ 85°C
Vibration Test	Pass 7.69G@ 20~2000Hz, compliant with MIL-STD-810G category 24
ESD Protection	8kV Contact, 15kV air
Certificate	CE/FCC
Dimension (L x W x H)	Full PCI Express Mini Card: 50.9 x 30 x 6.56mm Half PCI Express Mini Card: 26.8 x 30 x 6.56mm

I/O Connectors



Dimensions



Pin Assignment

Pin	Function	Pin	Function
1	NC	2	+V3.3
3	NC	4	GND
5	NC	6	NC
7	NC	8	NC
9	GND	10	NC
11	NC	12	NC
13	NC	14	NC
15	GND	16	NC
Mechanical Key			
17	NC	18	GND
19	NC	20	NC
21	GND	22	NC
23	NC	24	+V3.3
25	NC	26	GND
27	GND	28	NC
29	GND	30	NC
31	NC	32	NC
33	NC	34	GND
35	GND	36	USB_DM
37	GND	38	USB_DP
39	+V3.3	40	GND
41	+V3.3	42	NC
43	GND	44	NC
45	NC	46	NC
47	NC	48	NC
49	NC	50	GND
51	NC	52	+V3.3

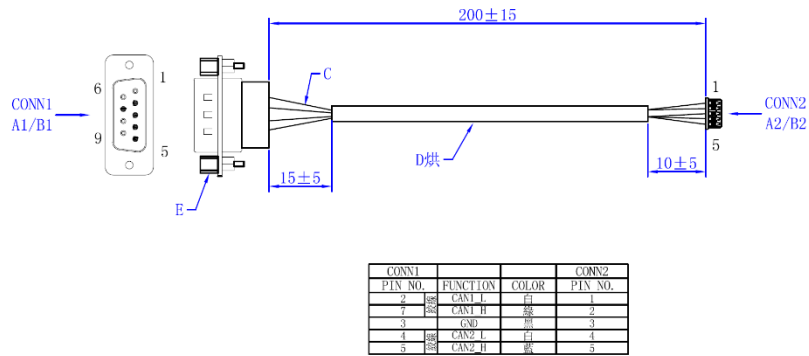
Ordering Information

Part Number	Description
FARO-HP100	Half Mini PCIE(USB), 2 channels CAN 2.0 A/B, Gyroscope, Accelerometer
FARO-HP700	Half Mini PCIE(USB), 2 channels CAN 2.0 A/B, OBDII, J1939, Gyroscope, Accelerometer
FARO-FP900	Full Mini PCIE(USB), 2 channels CAN 2.0 A/B, OBDII, J1939, J1708, Gyroscope, Accelerometer

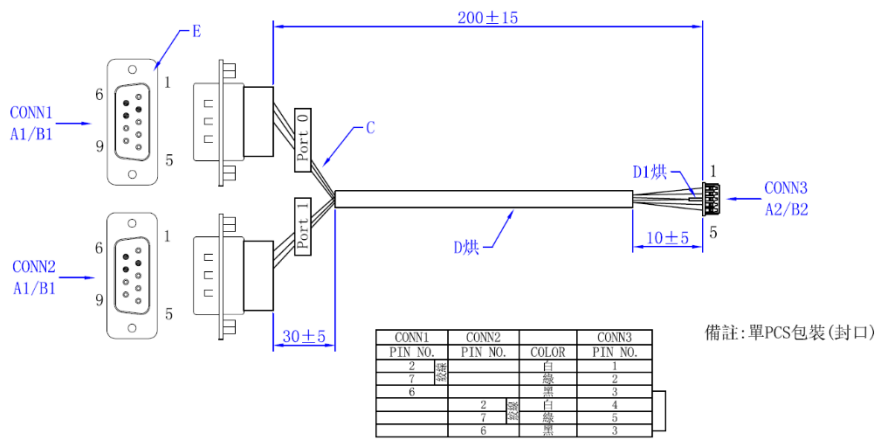
Optional Items

Part Number	Description
T1700000008	FARO/GADN CAN bus cable, Box Header 5P to DB9 Cable, 2 ch CAN, 200mm (CA0001)
T1700000009	FARO/GADN CAN bus cable, Box Header 5P to 2 DB9 Y Cable, 2 ch CAN, 200mm (CA0003)
T1700000010	FARO/GADN J1708 cable, Box Header 3P to DB9 Cable, 1 ch J1708, 200mm (CA0005)

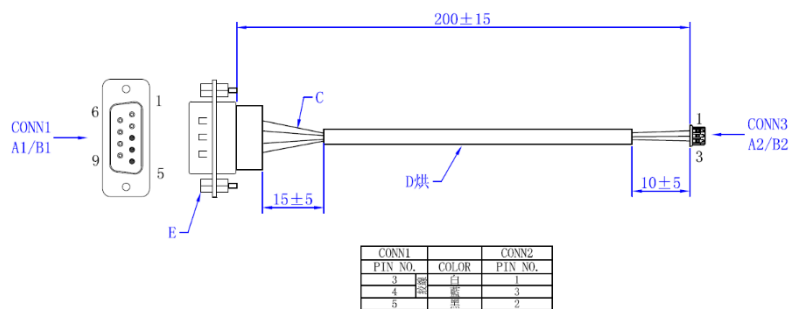
Cable: T170000008 : FARO/GADN CAN bus cable, Box Header 5P to DB9 Cable, 2 ch CAN, 200mm (CA0001)



Cable: T170000009 : FARO/GADN CAN bus cable, Box Header 5P to 2 DB9 Y Cable, 2 ch CAN, 200mm (CA0003)



Cable: T170000010 : FARO/GADN J1708 cable, Box Header 3P to DB9 Cable, 1 ch J1708, 200mm (CA0005)



ANTZER TECH CO., LTD.

Website : www.antzer-tech.com

Facebook : www.facebook.com/ANTZERTECH/

Tel : +886-2-7729-9223

Email : sales@antzer-tech.com

Office : 7F-7, No.237, Sec. 1, Datong Rd., Xizhi Dist., New Taipei City 221 Taiwan

