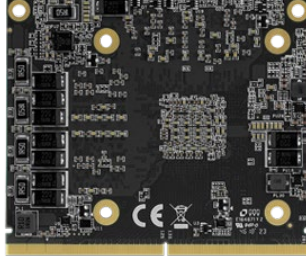
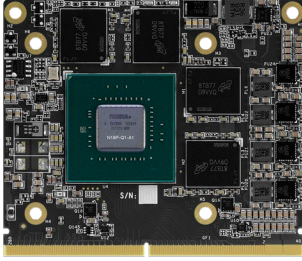


# AI Accelerator & GPU

# MXM Module M3P1000-LN



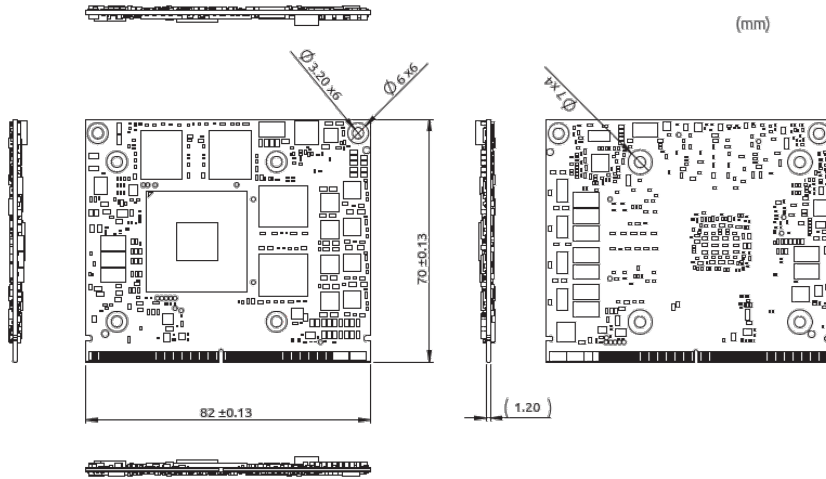
### Features

- Powered by Quadro Embedded P1000 GPU
- 512 new-gen. Pascal architecture CUDA cores
- DisplayPort 1.2 Certified, DisplayPort 1.3/1.4 Ready
- Support NVIDIA CUDA Toolkit 8.0, CUDA Compute version 6.1, DirectX 12, OpenGL 4.5 and Vulkan 1.0
- Ideal for medical imaging, gaming and deep learning applications

### Specifications

Model Number	M3P1000-LN
GPU Engine Specs	NVIDIA Quadro P1000 Architecture: NVIDIA Pascal CUDA Cores: 512 Floating Point Performance: 1.8 TFLOPS
Memory Specs	Size: 4GB GDDR5 Clock: 6 Gbps Interface Width: 128-bit Bandwidth (GB/sec): 96
Feature Support	PCI Express 3.0 DirectX: 12 Open GL 4.5 Vulkan 1.0
Display	Resolution: 7680x4320 Max: 4x DisplayPort
Power Consumption	Total Graphics Power (TGP): 47 W
Form Factor	MXM Graphics Module Version 3.1, Type A
Dimensions (WxD)	82.0 x 70.0 mm (3.22" x 2.75")
Net Weight	32.5g (0.0717 lb)
Vibration	2.4Grms, @5~500 Hz, Sine, 0.5Hr/axis
Temperature	Standard: Operating Temp. :0 to +55°C (32°F ~ 131°F) / Extended Operating Temp. :-40 to +85°C (-40°F ~ 185°F) / Storage Temperature: -40 to +85°C (-40°F ~ 185°F)
Humidity	95% @ 40°C Related Humidity, Non-condensing
OS Support	Windows 7/10 64-bit, Linux 64-bit
Certification	CE/FCC

**System & Mounting Dimensions**



**Ordering Information**

Model name	Description
M3P1000-LN	MXM3.1 Type A, NVIDIA Quadro P1000, 4GB GDDR5, 0°C to +55°C
M3P1000-LN-A	MXM3.1 Type A, NVIDIA Quadro P1000, 4GB GDDR5, -40°C to +85°C

**Accessory (Optional)**

Part No.	Description
62-7MXM6D-1000	PCIE Carrier Board, MXM3.1, 6x DP, 0°C to +55°C
92-6MXM4H-1000	PCIE Carrier Board, MXM3.1, 4x HDMI, 0°C to +55°C
39-V14646-0001	MXM-A Two Ball Bearing 12V 4800rpm 73*60*32.1mm (Active cooler)
39-V24646-0003	MXM-A 82*62*7mm CU1100, M2 SPRING SCREW*4 (Heat spreader)

