



L35

2U Liquid Cooler

PRODUCT SPECIFICATIONS

Speficiation Version: 02/13/2023

(Specifications are subject to change without notice)

Model Number: L35

- Recommend for CPU as following
 - AMD® Socket AM2/AM3/AM4/AM5/FM1/FM2;
 - Intel® Socket FCLGA 1150, 1151, 1155, 1156, 1366;
 - Intel® Socket LGA 1700;
 - Intel® Socket FCLGA 2011(sq), 2066(sq);
- Liquid cooler for 2U server & up

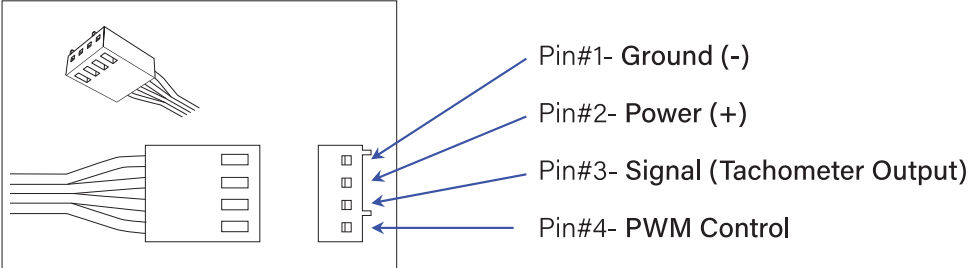
Overall Specification

- Cold Plate Module with Copper base
- Space-saving lightweight Radiator
- Triple 8 cm Cooling Fans with 4-Pin PWM Function
- Stand-alone Water Pump with Powerful Flow Rate 2.9 Litter Per Minute
- 300 mm Black Pair EPDM Tube Assembled
- Mounting Accessories are included
- Shin-Etsu Series Thermal Compound Pre-Printed on Base
- Support CPU Overclocking Power Mode up to 250 Watts Heat Dissipation

Cooling Fan Specification

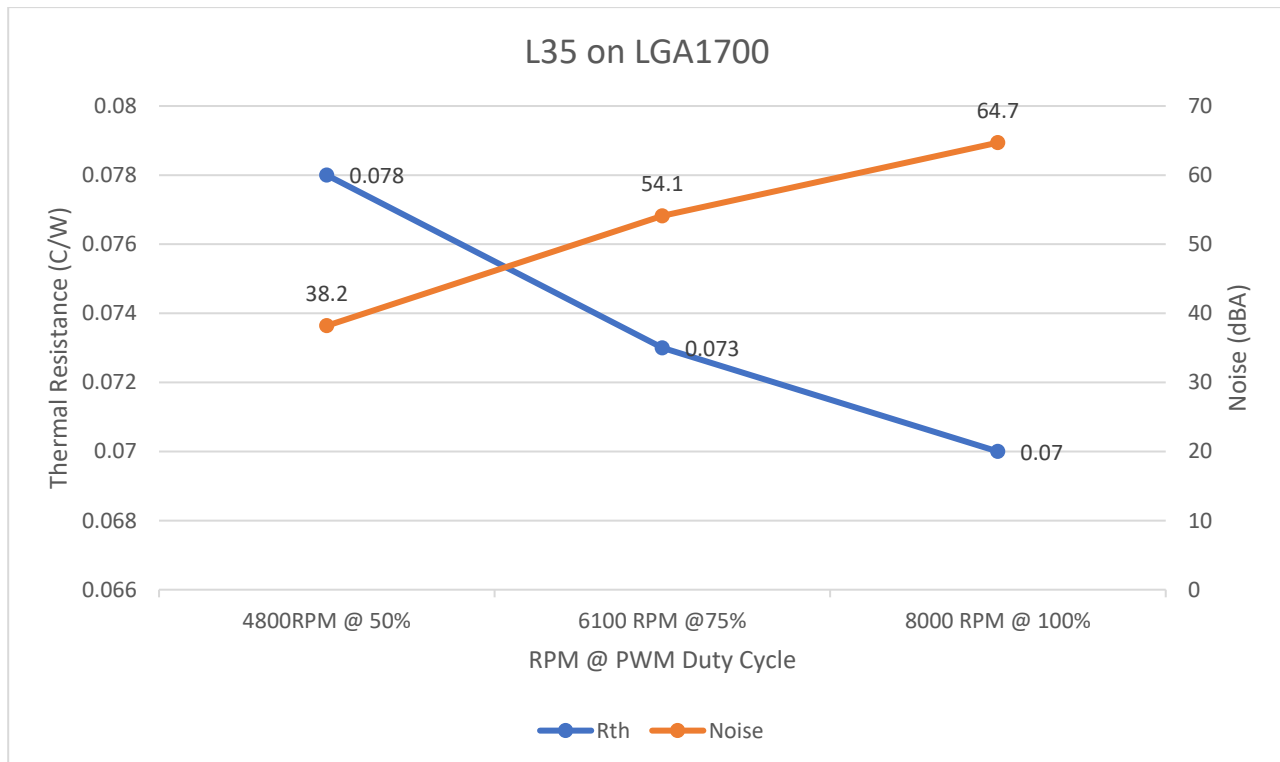
Model Number	DB128038BX-PWMG
Dimension	80 x 80 x 38 mm
Bearing	Liquid State
Rated Voltage	12V
Rated Speed	At Duty Cycle 0~20%: 2400± 200 RPM At Duty Cycle 50%: 4800± 10% RPM At Duty Cycle 100%: 8000±10% RPM
Input Power	At Duty Cycle 0~20%: 1.20 W At Duty Cycle 50%: 5.52 W At Duty Cycle 100%: 24.72 W
Maximum Airflow	At Duty Cycle 0~20%: 35.52CFM At Duty Cycle 50%: 67.24 CFM At Duty Cycle 100%: 115.61 CFM
Rated Static Pressure	At Duty Cycle 0~20%: 1.39 mm-H2O At Duty Cycle 50%: 5.97 mm-H2O At Duty Cycle 100%: 34.06 mm-H2O
Acoustical Noise	At Duty Cycle 0~20%: 25.63 dBA

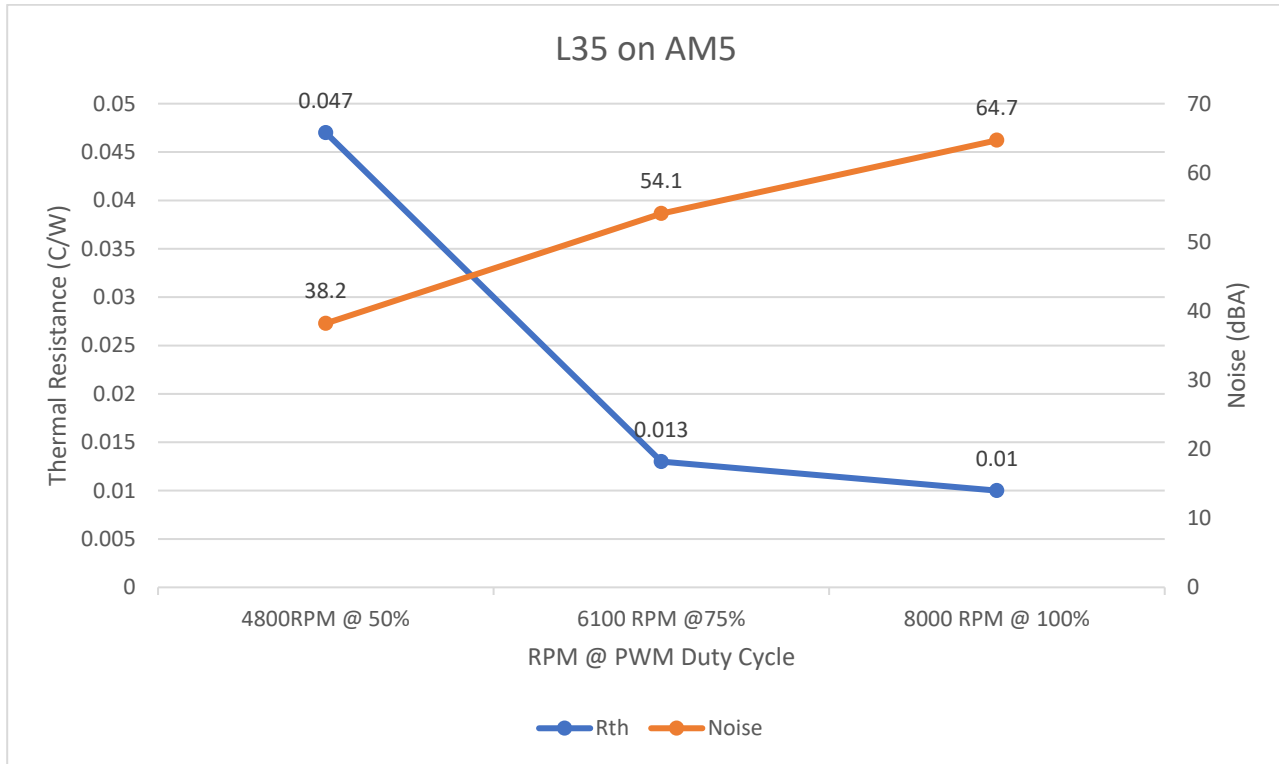
	At Duty Cycle 50%: 47.85 dBA At Duty Cycle 100%: 64.40 dBA
Lead Wire Pin Out	Pin#1- Black(-) Pin#2- Yellow(+) Pin#3- Green(Tachometer/ Signal Output) Pin#4- Blue (PWM)



Performance Chart: Liquid Cooler L35 Thermal Resistance Thermal Resistance vs. Fan Speed @ PWM Duty Cycle

LGA 1700:

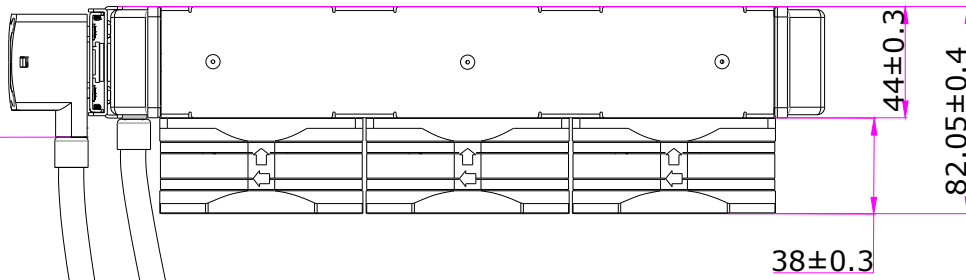
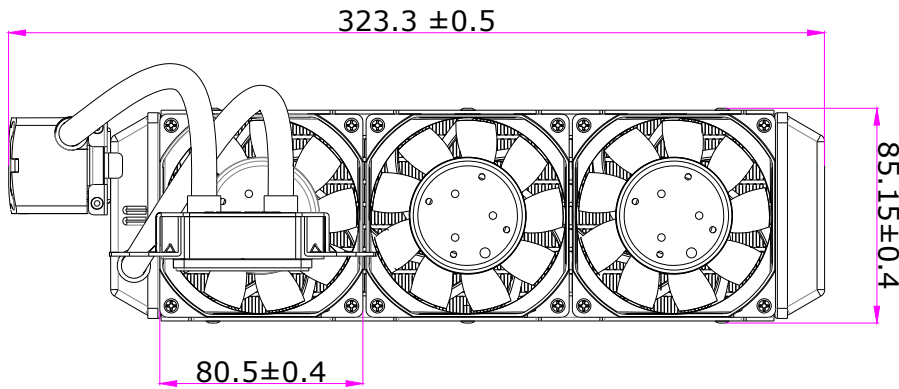


AM5:

Publication History:

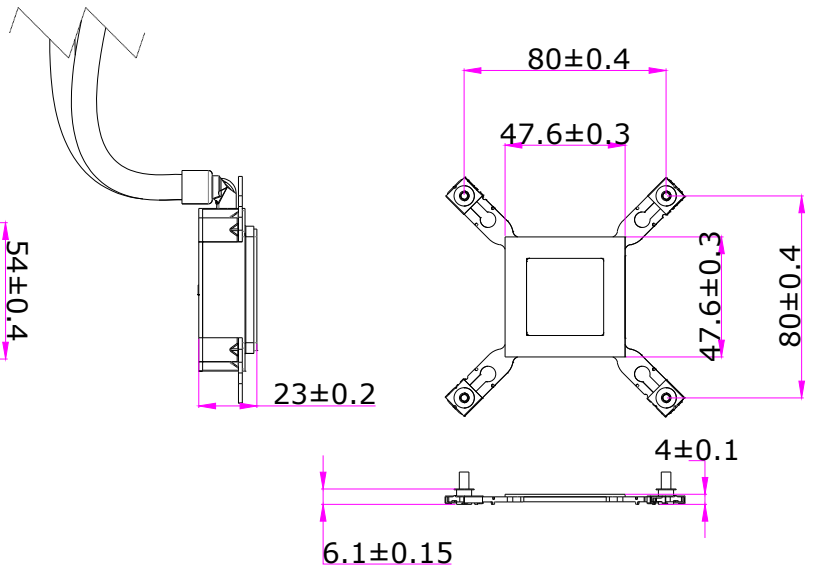
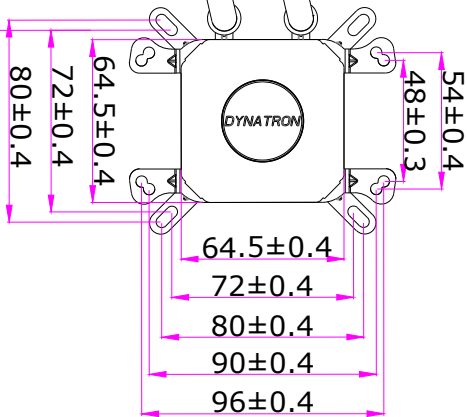
02/13/2023: Initial Release

(Specifications are subject to change without notice)

REV#	DESCRIPTION	CHECKER	DATE
0.0	INITIAL RELEASE	ENGR	02/10/23



Tubing length 300mm



NAME	DATE
DRAWN BY ENGR	02/10/2023
CHECKED BY ENGR	02/10/2023
ENG. APPROVED	
MFG. APPROVED	-



DYNATRON CORPORATION

TITLE:

2U Liquid Cooler L35
Overall Dimension Drawing

CONFIDENTIAL DOCUMENT
THIS DRAWING CONTAINS INFORMATION PROPRIETARY TO DYNATRON CORPORATION AND DYNAEON INDUSTRIAL CO., LTD. ANY REPRODUCTION, DISCLOSURE, OR USE OF THIS DRAWING IS EXPRESSLY PROHIBITED EXCEPT AS DYNATRON CORPORATION AND DYNAEON INDUSTRIAL CO., LTD. MAY OTHERWISE AGREE TO IN WRITING.

VIEW	
UNITS	MM

DWG. No:

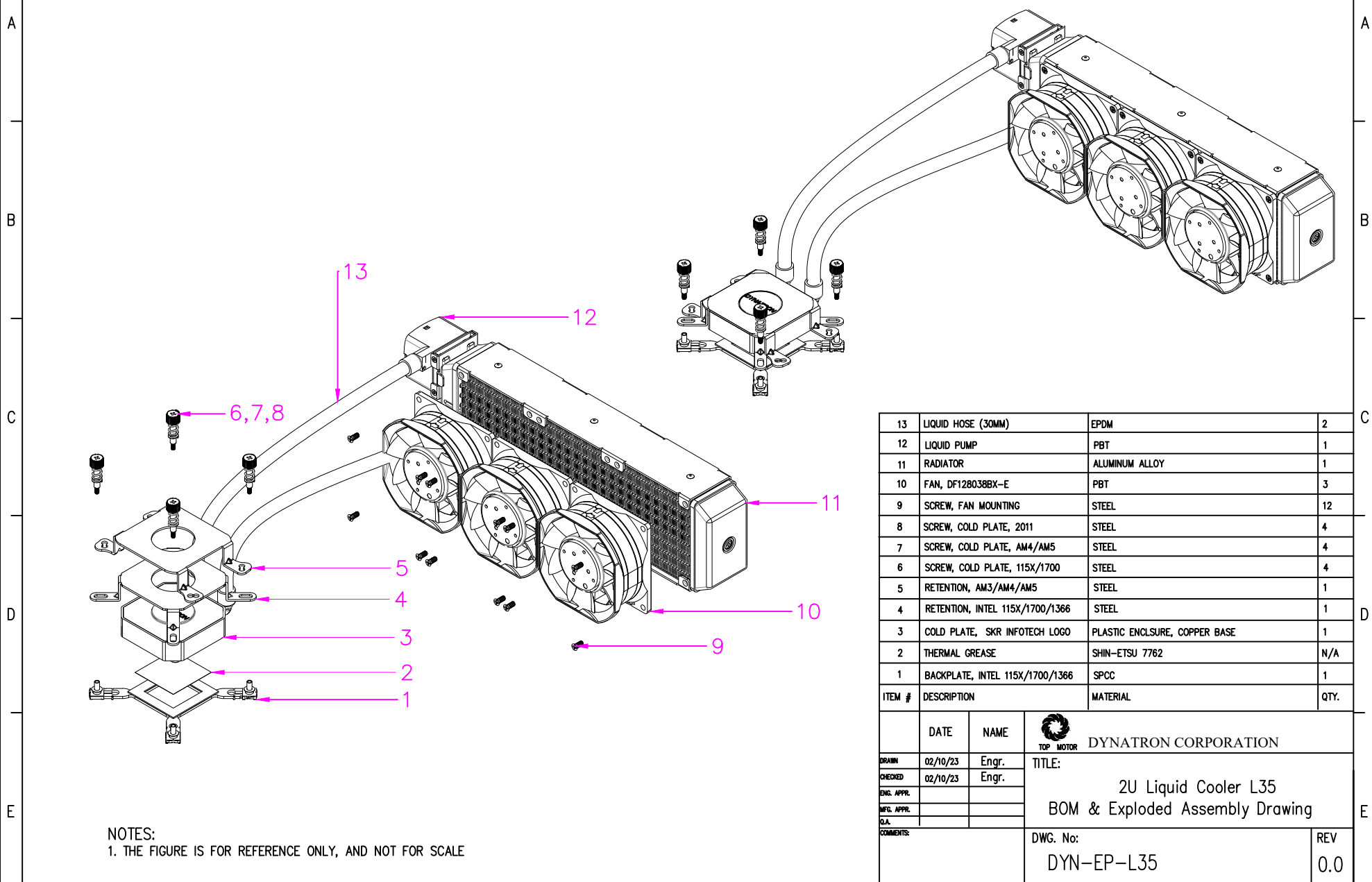
DYN-BD-L35

REV.
0.0

CONFIDENTIAL DOCUMENT

THIS DRAWING CONTAINS INFORMATION PROPRIETARY TO DYNATRON CORPORATION AND DYNAEON INDUSTRIAL CO., LTD.
 ANY REPRODUCTION, DISCLOSURE, OR USE OF THIS DRAWING IS EXPRESSLY PROHIBITED EXCEPT AS DYNATRON
 CORPORATION AND DYNAEON INDUSTRIAL CO., LTD. MAY OTHERWISE AGREE TO IN WRITING.

REV#	DESCRIPTION	CHECKER	DATE
0.0	INITIAL RELEASE	Engr.	02/10/23



ITEM #	DESCRIPTION	MATERIAL	QTY.
13	LIQUID HOSE (30MM)	EPDM	2
12	LIQUID PUMP	PBT	1
11	RADIATOR	ALUMINUM ALLOY	1
10	FAN, DF12803BBX-E	PBT	3
9	SCREW, FAN MOUNTING	STEEL	12
8	SCREW, COLD PLATE, 2011	STEEL	4
7	SCREW, COLD PLATE, AM4/AM5	STEEL	4
6	SCREW, COLD PLATE, 115X/1700	STEEL	4
5	RETENTION, AM3/AM4/AM5	STEEL	1
4	RETENTION, INTEL 115X/1700/1366	STEEL	1
3	COLD PLATE, SKR INFOTECH LOGO	PLASTIC ENCLOSURE, COPPER BASE	1
2	THERMAL GREASE	SHIN-ETSU 7762	N/A
1	BACKPLATE, INTEL 115X/1700/1366	SPCC	1

NOTES:
 1. THE FIGURE IS FOR REFERENCE ONLY, AND NOT FOR SCALE

DATE		NAME		DYNATRON CORPORATION TITLE: 2U Liquid Cooler L35 BOM & Exploded Assembly Drawing
DRAWN	02/10/23	Engr.		
CHECKED	02/10/23	Engr.		
ENG. APPR.				
MFG. APPR.				
COMMENTS:				DWG. No: DYN-EP-L35
				REV 0.0