

MS-9A65

Industrial Data Machine

The MSI logo is positioned in the lower right quadrant of the page. It features the lowercase letters 'msi' in a bold, italicized, sans-serif font. The logo is white with a subtle drop shadow, making it stand out against the background. The background itself is a grayscale, high-angle photograph of a complex industrial printed circuit board (PCB). The board is densely packed with various electronic components, including several large electrolytic capacitors, integrated circuits, and other surface-mounted parts. The lighting is dramatic, with a bright, hazy glow on the left side that fades into a darker, more detailed view of the board on the right. The overall aesthetic is technical and professional, emphasizing the industrial nature of the product.

msi

Copyright Notice

The material in this document is the intellectual property of **MICRO-STAR INTERNATIONAL**. We take every care in the preparation of this document, but no guarantee is given as to the correctness of its contents. Our products are under continual improvement and we reserve the right to make changes without notice.

Trademarks

All trademarks are the properties of their respective owners.

- MSI® is a registered trademark of Micro-Star Int'l Co.,Ltd.
- NVIDIA® is a registered trademark of NVIDIA Corporation.
- AMD® is a registered trademark of AMD Corporation.
- Intel® is a registered trademark of Intel Corporation.
- Windows® is a registered trademark of Microsoft Corporation.
- AMI® is a registered trademark of Advanced Micro Devices, Inc.
- Award® is a registered trademark of Phoenix Technologies Ltd.
- Realtek® is a registered trademark of Realtek Semiconductor Corporation.

Revision History

Revision	Date
V1.1	2016/12

Technical Support

If a problem arises with your system and no solution can be obtained from the user's manual, please contact your place of purchase or local distributor. Alternatively, please try the following help resources for further guidance.



Visit the MSI website for technical guide, BIOS updates, driver updates, and other information:
<http://www.msi.com/service/download/>



Contact our technical staff at:
<http://support.msi.com/>

Safety Instructions

- Always read the safety instructions carefully.
- Keep this User's Manual for future reference.
- Keep this equipment away from humidity.
- Lay this equipment on a reliable flat surface before setting it up.
- The openings on the enclosure are for air convection hence protects the equipment from overheating. **DO NOT COVER THE OPENINGS.**
- Make sure the voltage of the power source and adjust properly 110/220V before connecting the equipment to the power inlet.
- Place the power cord such a way that people can not step on it. Do not place anything over the power cord.
- Always Unplug the Power Cord before inserting any add-on card or module.
- All cautions and warnings on the equipment should be noted.
- Never pour any liquid into the opening that could damage or cause electrical shock.
- If any of the following situations arises, get the equipment checked by service personnel:
 - The power cord or plug is damaged.
 - Liquid has penetrated into the equipment.
 - The equipment has been exposed to moisture.
 - The equipment does not work well or you can not get it work according to User's Manual.
 - The equipment has dropped and damaged.
 - The equipment has obvious sign of breakage.
- **DO NOT LEAVE THIS EQUIPMENT IN AN ENVIRONMENT UNCONDITIONED, STORAGE TEMPERATURE ABOVE 60°C (140°F), IT MAY DAMAGE THE EQUIPMENT.**

Chemical Substances Information

In compliance with chemical substances regulations, such as the EU REACH Regulation (Regulation EC No. 1907/2006 of the European Parliament and the Council), MSI provides the information of chemical substances in products at:

http://www.msi.com/html/popup/csr/evmtrptt_pcm.html

Battery Information



European Union:

Batteries, battery packs, and accumulators should not be disposed of as unsorted household waste. Please use the public collection system to return, recycle, or treat them in compliance with the local regulations.



Taiwan:

For better environmental protection, waste batteries should be collected separately for recycling or special disposal.

廢電池請回收

California, USA:

The button cell battery may contain perchlorate material and requires special handling when recycled or disposed of in California.

For further information please visit:

<http://www.dtsc.ca.gov/hazardouswaste/perchlorate/>

Danger of explosion if battery is incorrectly replaced. Replace only with the same or equivalent type recommended by the manufacturer.

CE Conformity



Hereby, Micro-Star International CO., LTD declares that this device is in compliance with the essential safety requirements and other relevant provisions set out in the European Directive.

FCC-A Radio Frequency Interference Statement



This equipment has been tested and found to comply with the limits for a Class A digital device, pursuant to Part 15 of the FCC Rules. These limits are designed to provide reasonable protection against harmful interference when the equipment is operated in a commercial environment. This equipment generates, uses and can radiate radio frequency energy and, if not installed and used in accordance with the instruction manual, may cause harmful interference to radio communications. Operation of this equipment in a residential area is likely to cause harmful interference, in which case the user will be required to correct the interference at his own expense.

Notice 1

The changes or modifications not expressly approved by the party responsible for compliance could void the user's authority to operate the equipment.

Notice 2

Shielded interface cables and AC power cord, if any, must be used in order to comply with the emission limits.

VOIR LA NOTICE D'INSTALLATION AVANT DE RACCORDER AU RESEAU.

This device complies with Part 15 of the FCC Rules. Operation is subject to the following two conditions:

- 1) this device may not cause harmful interference, and
- 2) this device must accept any interference received, including interference that may cause undesired operation.

WEEE Statement



Under the European Union ("EU") Directive on Waste Electrical and Electronic Equipment, Directive 2002/96/EC, which takes effect on August 13, 2005, products of "electrical and electronic equipment" cannot be discarded as municipal waste anymore and manufacturers of covered electronic equipment will be obligated to take back such products at the end of their useful life. MSI will comply with the product take back requirements at the end of life of MSI-branded products that are sold into the EU. You can return these products to local collection points.

Japan JIS C 0950 Material Declaration

A Japanese regulatory requirement, defined by specification JIS C 0950, mandates that manufacturers provide material declarations for certain categories of electronic products offered for sale after July 1, 2006.

http://www.msi.com/html/popup/csr/cemm_jp.html

http://tw.msi.com/html/popup/csr_tw/cemm_jp.html

日本JIS C 0950材質宣言

日本工業規格JIS C 0950により、2006年7月1日以降に販売される特定分野の電気および電子機器について、製造者による含有物質の表示が義務付けられます。

http://www.msi.com/html/popup/csr/cemm_jp.html

http://tw.msi.com/html/popup/csr_tw/cemm_jp.html

India RoHS

This product complies with the "India E-waste (Management and Handling) Rule 2011" and prohibits use of lead, mercury, hexavalent chromium, polybrominated biphenyls or polybrominated diphenyl ethers in concentrations exceeding 0.1 weight % and 0.01 weight % for cadmium, except for the exemptions set in Schedule 2 of the Rule.

Turkey EEE Regulation

Conforms to the EEE Regulations of the Republic Of Turkey

Türkiye EEE yönetmeliği

Türkiye Cumhuriyeti: EEE Yönetmeliğine Uygundur

Ukraine Restriction of Hazardous Substances

The equipment complies with requirements of the Technical Regulation, approved by the Resolution of Cabinet of Ministry of Ukraine as of December 3, 2008 № 1057, in terms of restrictions for the use of certain dangerous substances in electrical and electronic equipment.

Україна обмеження на наявність небезпечних речовин

Обладнання відповідає вимогам Технічного регламенту щодо обмеження використання деяких небезпечних речовин в електричному та електронному обладнанні, затвердженого постановою Кабінету Міністрів України від 3 грудня 2008 № 1057.

Vietnam RoHS

As from December 1, 2012, all products manufactured by MSI comply with Circular 30/2011/TT-BCT temporarily regulating the permitted limits for a number of hazardous substances in electronic and electric products.

Việt Nam RoHS

Kể từ ngày 01/12/2012, tất cả các sản phẩm do công ty MSI sản xuất tuân thủ Thông tư số 30/2011/TT-BCT quy định tạm thời về giới hạn hàm lượng cho phép của một số hóa chất độc hại có trong các sản phẩm điện, điện tử"

CONTENTS

Copyright Notice.....	ii
Trademarks	ii
Revision History	ii
Technical Support.....	ii
Safety Instructions.....	iii
Chemical Substances Information	iv
Battery Information.....	iv
CE Conformity.....	v
FCC-A Radio Frequency Interference Statement	v
WEEE Statement	v
Japan JIS C 0950 Material Declaration.....	vi
India RoHS.....	vi
Turkey EEE Regulation.....	vi
Ukraine Restriction of Hazardous Substances.....	vi
Vietnam RoHS	vii
1 Overview.....	1-1
Packing Contents	1-2
System Overview	1-3
System Specifications	1-7
2 Getting Started.....	2-1
Installation Tools.....	2-2
System Setup.....	2-3
Power Management.....	2-7
3 BIOS Setup.....	3-1
Entering Setup	3-2
The Menu Bar	3-4
Main	3-5
Advanced	3-6
Boot.....	3-11
Security	3-12
Chipset	3-16
Power.....	3-17
Save & Exit.....	3-18

4 MSI HIDAC Utility	4-1
Activating the Utility.....	4-2
Watchdog.....	4-2
System Info.....	4-3
HW Monitor.....	4-3
Alarm Settings.....	4-4
Alarm Logs.....	4-4
Appendix WDT	A-1
WDT Sample Code.....	A-2

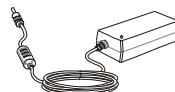
1 Overview

Thank you for choosing the WindBOX, an excellent industrial computer system from MSI. The WindBOX eliminates the noise and the risk of fan's failure by adopting wide heatsink as fanless solution. It supports various scenarios like digital signage, thin client, and POS with affordable expenditure, which not only meets the demand of Industrial applications but also fulfill the needs of companies, governments, and institutes for general applications.

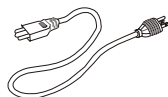
Packing Contents



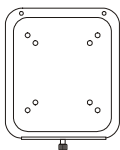
MS-9A65 System



Power Adapter



Power Cord



VESA Mount Plate



Wireless LAN Antenna



Driver/Utility Disk

- Please contact us immediately if any of the item is damaged or missing.
- The picture is for your reference only and your packing contents may slightly vary depending on the model you purchased.

System Overview

➤ System I/O & Controls - Left



➤ System I/O & Controls - Right



1 Antenna Connector (Optional)

This connector allows you to connect an external antenna for wireless LAN. Users may find one antenna connector on the bottom I/O panel and two on the left and right sides of the system.

2 USB 2.0 Port

The USB (Universal Serial Bus) port is for attaching USB devices such as keyboard, mouse, or other USB-compatible devices. It supports up to 480Mbit/s (Hi-Speed) data transfer rate.

3 USB 3.0 Port

The USB 3.0 port is backward-compatible with USB 2.0 devices. It supports up to 5Gbit/s (SuperSpeed) data transfer rate.

4 HDMI-Out Port 

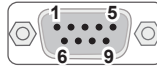
The High-DefinitionMultimedia Interface (HDMI) is an all-digital audio/video interface capable of transmitting uncompressed streams. HDMI supports all TV format, including standard, enhanced, or high-definitionvideo, plus multi-channel digital audio on a single cable.

5 System Power Button

Press the switch to turn the power supply on or off.

6**RS-232/422/485 Serial Port: COM1 (0V/5V/12V)**

The serial port is a 16550A high speed communications port that sends/receives 16 bytes FIFOs. It supports barcode scanners, barcode printers, bill printers, credit card machine, etc.

**RS-232**

PIN	SIGNAL	DESCRIPTION
1	NDCCD	Data Carrier Detect
2	NSIN	Signal In
3	NSOUT	Signal Out
4	NDTR	Data Terminal Ready
5	GND	Signal Ground
6	NDSR	Data Set Ready
7	NRTS	Request To Send
8	NCTS	Clear To Send
9	VCC	5V or 12V selected by jumper

RS-422

PIN	SIGNAL	DESCRIPTION
1	422 TXD-	Transmit Data, Negative
2	422 RXD+	Receive Data, Positive
3	422 TXD+	Transmit Data, Positive
4	422 RXD-	Receive Data, Negative
5	GND	Signal Ground
6	NC	No Connection
7	NC	No Connection
8	NC	No Connection
9	NC	No Connection

RS-485

PIN	SIGNAL	DESCRIPTION
1	485 TXD-	Transmit Data, Negative
2	NC	No Connection
3	485 TXD+	Transmit Data, Positive
4	NC	No Connection
5	GND	Signal Ground
6	NC	No Connection
7	NC	No Connection
8	NC	No Connection
9	NC	No Connection

7**19V DC Power Jack**

Power supplied through this jack supplies power to the system.

8 **RJ45 LAN Jack**

The standard RJ-45 LAN jack is provided for connection to the Local Area Network (LAN). You can connect a network cable to it.

9 **Headphone Jack (Green)**

This connector is provided for headphones or speakers.

10 **Microphone Jack (Pink)**

This connector is provided for microphones.

11 **DVI-I Port**

The DVI-I (Digital Visual Interface-Integrated) connector allows you to connect an LCD monitor. It provides a high-speed digital interconnection between the computer and its display device. To connect an LCD monitor, simply plug your monitor cable into the DVI connector, and make sure that the other end of the cable is properly connected to your monitor (refer to your monitor manual for more information.)

12 **Antenna Connector**

This connector allows you to connect an external antenna for wireless LAN. Users may find one antenna connector on the bottom I/O panel and two on the left and right sides of the system.

System Specifications

Processor

- Intel Bay trail D processor

Memory

- Max. 8GB DDR3L 1333MHz SO-DIMM

LAN

- 2 * Intel I210-AT Gbe LAN

Audio

- ALC887-VD2-CG co-lay ALC888S Audio codec

Storage

- 1 * SATA II Port
- 1 * mSATA Slot (share with mini-PCIe)

System I/O & Controls

- 2 * Antenna Connectors
- 1 * 19V DC-In Power Jack
- 1 * DVI-I Port
- 1 * RS-232/422/485 Serial Port
- 2 * RJ45 LAN Jacks
- 2 * USB 2.0 Ports
- 1 * USB 3.0 Port
- 1 * HDMI out put Connector
- 1 * Headphone Jack
- 1 * Microphone Jack
- 1 * System Power Button


Expansion Slot

- 2 * mini-PCIe Slots
- 1 * SIM Card socket

Certification

- Safety: TUV, CB, UL
- EMI: FCC Class A/ CE / C-Tick / BSMI / VCCI
- RoHS Compliant

Power Supply

- 65 Watt AC/DC Adapter
- Input: 100-240V~, 1.5A, 50-60Hz
- Output: 19V  3.42A MAX
- Each COM port outputs 0.5A/Maximum

OS Support

- Windows 7 32/64 Bit
- Windows 8 & 8.1 32/64 Bit
- Windows 10 32/64 Bit

Environmental





- Operation Temperature:
 - 0 ~ 40°C (w/ HDD, DC Adaptor)
 - -10 ~ 50°C (w/ HDD, Industrial DC Adaptor)
 - -10 ~ 60°C (w/ SSD, Industrial DC Adaptor)
- Storage Temperature: -20 ~ 80°C
- Relative Humidity: 0 ~ 90%, non-condensing

2 Getting Started



This chapter provides you with the information on hardware setup procedures. While connecting peripheral devices, be careful in holding the devices and use a grounded wrist strap to avoid static electricity.

Installation Tools

	<p>A Phillips (crosshead) screwdriver and a flathead screwdriver, can be used to do most of the installation. Choose one with a magnetic head would be better.</p>
	<p>Pliers, can be used as an auxiliary tool to connect some connectors or cables.</p>
	<p>Forceps, can be used to pick up tiny screws or set up the jumpers.</p>
	<p>Rubber gloves, can prevent yourself from being incised and suffering the static charge.</p>

System Setup

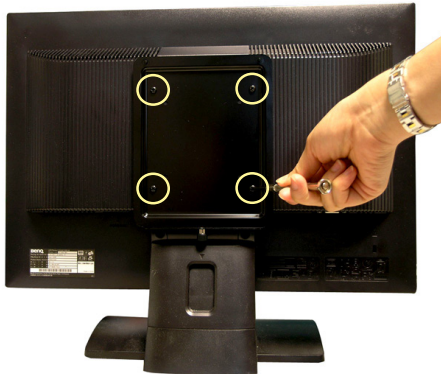
Step 1:

Locate the VESA mount screw holes on the back of the LCD monitor.



Step 2:

Fasten the VESA mount plate to the monitor with the supplied screws.



Step 3:

Mount the system onto the VESA mount plate.



Step 4:

Tighten the thumbscrew at the bottom of the VESA mount plate to secure the system.



Step 5:

Locate the wireless LAN antenna connector and install the antenna.

**Step 6:**

Locate the signal cable of the monitor and connect one end of the cable to the DVI port of the system. You may need to get an adapter if the supplied signal cable isn't DVI-interfaced.

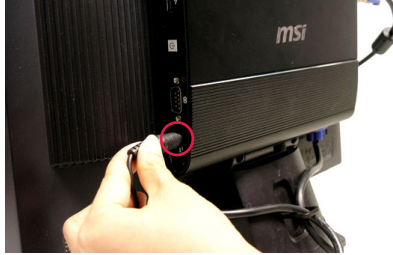
**Step 7:**

Connect the other end of the signal cable to the monitor. Connect the monitor power cord to the monitor and to the power source.



Step 8:

Assemble the system power adapter and the power cord. Connect the power adapter to the system and then connect the power cord to the power source.

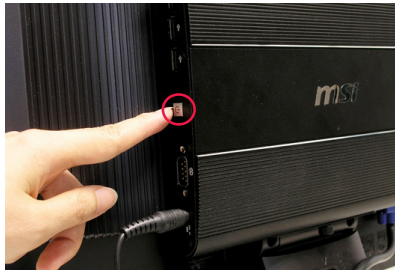


Important

We suggest that you connect the power adapter to your system first and then connect the power cord to the socket-outlet for safety concerns.

Step 9:

Turn on the system and enjoy it.



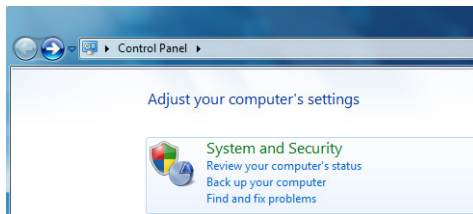
Power Management

Power management of personal computers (PCs) and monitors has the potential to save significant amounts of electricity as well as deliver environmental benefits.

To be energy efficient, turn off your display or set your PC to sleep mode after a period of user inactivity.

► Power Management in Windows 7

- [Power Options] in Windows OS allow you to control the power management features of your display, hard drive, and battery. Go to [Start] > [Control Panel] > [System and Security].



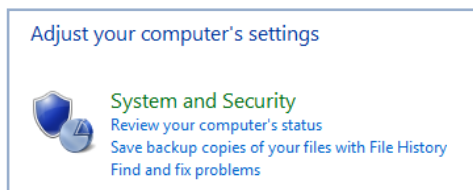
Then click on the [Power Options] link.

Select a power plan that suits your personal needs. You may also fine-tune the settings by clicking [Change plan settings].

- The Shut Down Computer menu presents the options of Sleep (S3/S4) & Shut Down (S5) for rapid and easy management of your system power.

► Power Management in Windows 8

- [Power Options] in Windows OS allow you to control the power management features of your display, hard drive, and battery. Go to [Start] > [Control Panel] > [System and Security].



Then click on the [Power Options] link.

Select a power plan that suits your personal needs. You may also fine-tune the settings by clicking [Change plan settings].

- The Shut Down Computer menu presents the options of Sleep (S3/S4) & Shut Down (S5) for rapid and easy management of your system power.

➤ Power Management through ENERGY STAR qualified monitors

The power management feature allows the computer to initiate a low-power or “Sleep” mode after a period of user inactivity. When used with an external ENERGY STAR qualified monitor, this feature also supports similar power management features of the monitor. To take advantage of these potential energy savings, the power management feature has been preset to behave in the following ways when the system is operating on AC power:



- Turn off the display after 15 minutes
- Initiate Sleep after 30 minutes

➤ Waking the System Up

The computer shall be able to wake up from power saving mode in response to a command from any of the following:

- the power button,
- the network (Wake On LAN),
- the mouse,
- the keyboard.



Energy Saving Tips:

- Turn off the monitor by pressing the LCD power button after a period of user inactivity.
- Tune the settings in Power Options under Windows OS to optimize your PC's power management.
- Install power saving software to manage your PC's energy consumption.
- Always disconnect the AC power cord or switch the wall socket off if your PC would be left unused for a certain time to achieve zero energy consumption.

3 BIOS Setup

This chapter provides information on the BIOS Setup program and allows users to configure the system for optimal use.

Users may need to run the Setup program when:

- An error message appears on the screen at system startup and requests users to run SETUP.
- Users want to change the default settings for customized features.

Important

- *Please note that BIOS update assumes technician-level experience.*
- *As the system BIOS is under continuous update for better system performance, the illustrations in this chapter should be held for reference only.*

Entering Setup

Power on the computer and the system will start POST (Power On Self Test) process. When the message below appears on the screen, press or <F2> key to enter Setup.

Press or <F2> to enter SETUP

If the message disappears before you respond and you still wish to enter Setup, restart the system by turning it OFF and On or pressing the RESET button. You may also restart the system by simultaneously pressing <Ctrl>, <Alt>, and <Delete> keys.

Important

The items under each BIOS category described in this chapter are under continuous update for better system performance. Therefore, the description may be slightly different from the latest BIOS and should be held for reference only.

Control Keys

← →	Select Screen
↑ ↓	Select Item
Enter	Select
+ -	Change Option
F1	General Help
F7	Previous Values
F9	Optimized Defaults
F10	Save & Exit
Esc	Exit

Getting Help

After entering the Setup menu, the first menu you will see is the Main Menu.

Main Menu

The main menu lists the setup functions you can make changes to. You can use the arrow keys (↑ ↓) to select the item. The on-line description of the highlighted setup function is displayed at the bottom of the screen.

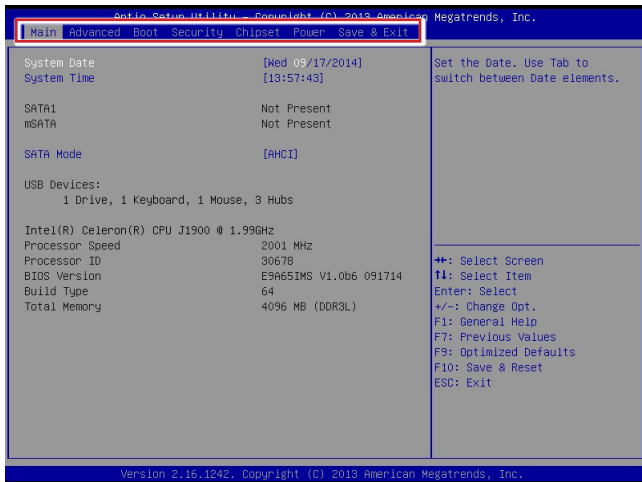
Sub-Menu

If you find a right pointer symbol appears to the left of certain fields that means a sub-menu can be launched from this field. A sub-menu contains additional options for a field parameter. You can use arrow keys (↑ ↓) to highlight the field and press <Enter> to call up the sub-menu. Then you can use the control keys to enter values and move from field to field within a sub-menu. If you want to return to the main menu, just press the <Esc >.

General Help <F1>

The BIOS setup program provides a General Help screen. You can call up this screen from any menu by simply pressing <F1>. The Help screen lists the appropriate keys to use and the possible selections for the highlighted item. Press <Esc> to exit the Help screen.

The Menu Bar



► Main

Use this menu for basic system configurations, such as time, date, etc.

► Advanced

Use this menu to set up the items of special enhanced features.

► Boot

Use this menu to specify the priority of boot devices.

► Security

Use this menu to set supervisor and user passwords.

► Chipset

This menu controls the advanced features of the onboard chipsets.

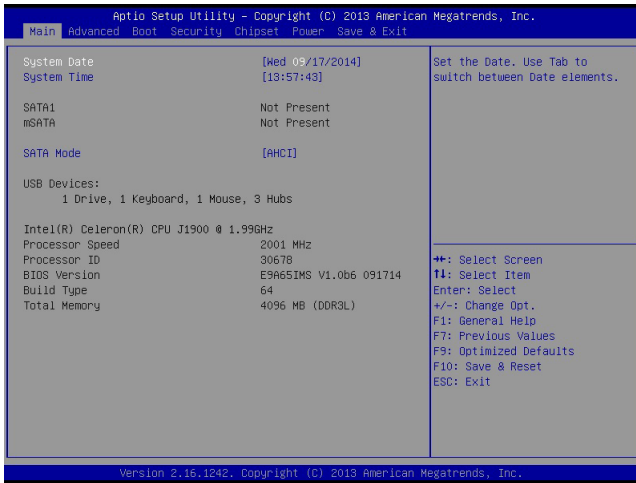
► Power

Use this menu to specify your settings for power management.

► Save & Exit

This menu allows you to load the BIOS default values or factory default settings into the BIOS and exit the BIOS setup utility with or without changes.

Main



► System Date

This setting allows you to set the system date. The date format is <Day>, <Month> <Date> <Year>.

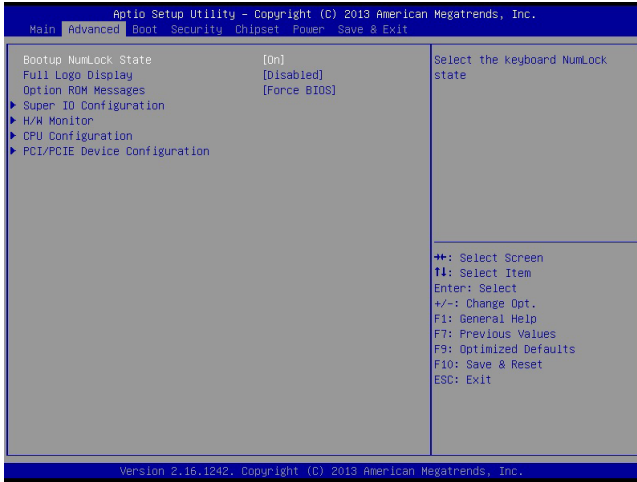
► System Time

This setting allows you to set the system time. The time format is <Hour> <Minute> <Second>.

► SATA Mode Selection

This setting specifies the SATA controller mode.

Advanced



► Bootup NumLock State

This setting is to set the Num Lock status when the system is powered on. Setting to [On] will turn on the Num Lock key when the system is powered on. Setting to [Off] will allow users to use the arrow keys on the numeric keypad.

► Full Screen Logo Display

This BIOS feature determines if the BIOS should hide the normal POST messages with the motherboard or system manufacturer's full-screen logo.

When it is enabled, the BIOS will display the full-screen logo during the boot-up sequence, hiding normal POST messages.

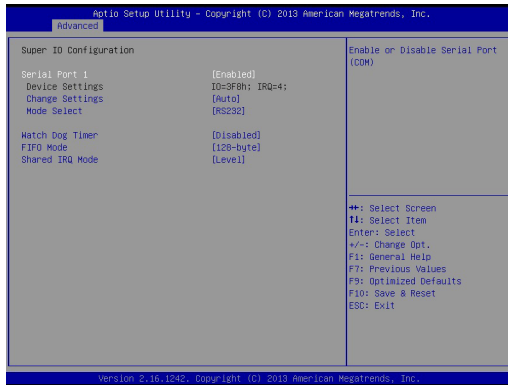
When it is disabled, the BIOS will display the normal POST messages, instead of the full-screen logo.

Please note that enabling this BIOS feature often adds 2-3 seconds of delay to the booting sequence. This delay ensures that the logo is displayed for a sufficient amount of time. Therefore, it is recommended that you disable this BIOS feature for a faster boot-up time.

► Option ROM Messages

This item is used to determine the display mode when an optional ROM is initialized during POST. When set to [Force BIOS], the display mode used by AMI BIOS is used. Select [Keep Current] if you want to use the display mode of optional ROM.

► Super IO Configuration



► Serial Port 1

This setting enables/disables the specified serial port.

► Device Settings

This item shows the address & IRQ settings of the serial port.

► Change Settings

This setting is used to change the address & IRQ settings of the specified serial port.

► Mode Select

Select an operation mode for the serial port 1.

► Watch Dog Timer

You can enable the system watch-dog timer, a hardware timer that generates a reset when the software that it monitors does not respond as expected each time the watch dog polls it.

► FIFO Mode

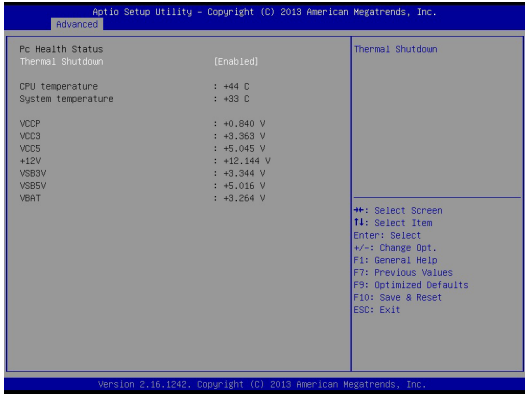
This setting controls the FIFO data transfer mode.

► Shared IRQ Mode

This setting provides the system with the ability to share interrupts among its serial ports.

► **PC Health Configuration**

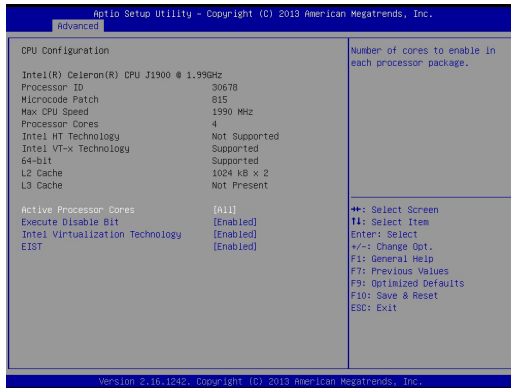
These items display the current status of all monitored hardware devices/components such as voltages, temperatures and all fans' speeds.



► **Thermal Shutdown**

This setting controls the thermal shutdown function to prevent the system from overheating.

► CPU Configuration



► Active Processor Cores

This item allows you to select the number of active processor cores.

► Execute Disable Bit

Intel's Execute Disable Bit functionality can prevent certain classes of malicious "buffer overflow" attacks when combined with a supporting operating system. This functionality allows the processor to classify areas in memory by where application code can execute and where it cannot. When a malicious worm attempts to insert code in the buffer, the processor disables code execution, preventing damage or worm propagation.

► Intel Virtualization Technology

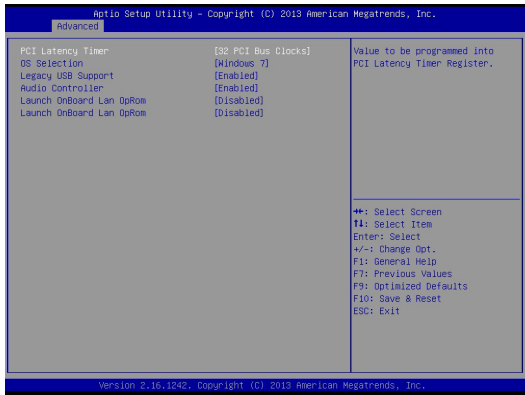
Virtualization enhanced by Intel Virtualization Technology will allow a platform to run multiple operating systems and applications in independent partitions. With virtualization, one computer system can function as multiple "Virtual" systems.

► EIST

EIST (Enhanced Intel SpeedStep Technology) allows the system to dynamically adjust processor voltage and core frequency, which can result in decreased average power consumption and decreased average heat production.

When disabled, the processor will return the actual maximum CPUID input value of the processor when queried.

► **PCI/PCIE Device Configuration**



► **PCI Latency Timer**

This item controls how long each PCI device can hold the bus before another takes over. When set to higher values, every PCI device can conduct transactions for a longer time and thus improve the effective PCI bandwidth. For better PCI performance, you should set the item to higher values.

► **OS Selection**

Allows you to select the OS version.

[Windows 8] For Windows 8.X

[Windows 7] For Windows 7

► **Legacy USB Support**

Set to [Enabled] if you need to use any USB 1.1/2.0 device in the operating system that does not support or have any USB 1.1/2.0 driver installed, such as DOS and SCO Unix.

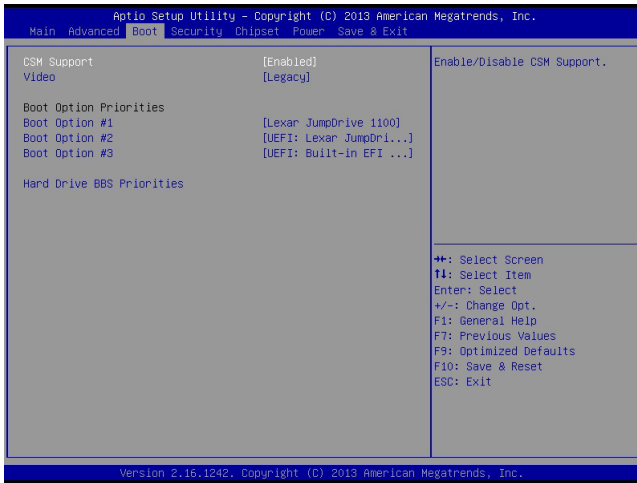
► **Audio Controller**

This setting enables/disables the onboard audio controller.

► **Launch OnBoard LAN OpROM**

These settings enable/disable the initialization of the onboard/onchip LAN Boot ROM during bootup. Selecting [Disabled] will speed up the boot process.

Boot



► CSM Support

This setting enables/disables the support for Compatibility Support Module, a part of the Intel Platform Innovation Framework for EFI providing the capability to support legacy BIOS interfaces.

Important

*If the Operating System is going to boot in UEFI mode, disable **CSM Support** to speed up the boot process.*

► Video

Allows you to select the OS mode.

[EFI Mode OS] For UEFI mode.

[Legacy Mode OS] For Legacy mode.

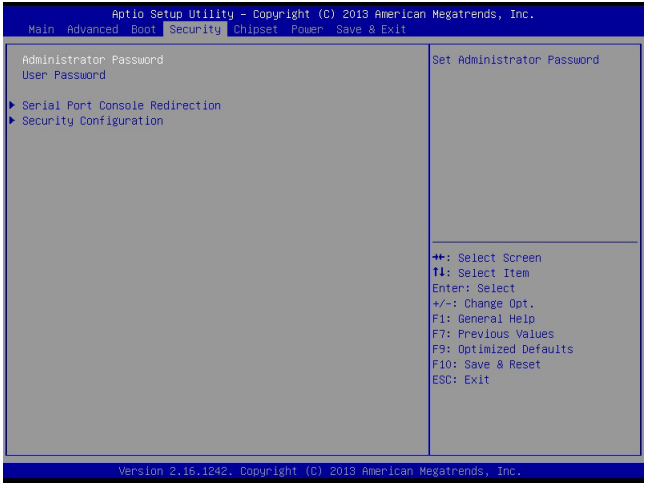
► Boot Option Priorities

This setting allows users to set the sequence of boot devices where BIOS attempts to load the disk operating system.

► Hard Drive BBS Priorities

This setting allows users to set the priority of the specified devices. First press <Enter> to enter the sub-menu. Then you may use the arrow keys (↑↓) to select the desired device, then press <+>, <-> or <PageUp>, <PageDown> key to move it up/down in the priority list.

Security



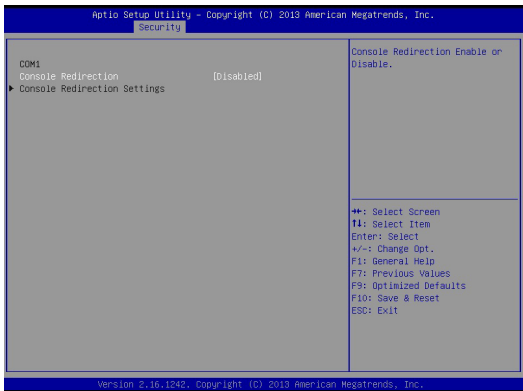
▶ **Administrator Password**

Administrator Password controls access to the BIOS Setup utility.

▶ **User Password**

User Password controls access to the system at boot and to the BIOS Setup utility.

▶ **Serial Port Console Redirection**

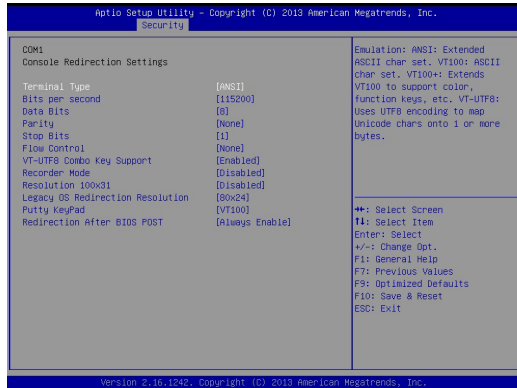


► Console Redirection

Console Redirection operates in host systems that do not have a monitor and keyboard attached. This setting enables/disables the operation of console redirection. When set to [Enabled], BIOS redirects and sends all contents that should be displayed on the screen to the serial COM port for display on the terminal screen. Besides, all data received from the serial port is interpreted as keystrokes from a local keyboard.

► Console Redirection Settings

Press <Enter> to enter the submenu.



► Terminal Type

To operate the system's console redirection, you need a terminal supporting ANSI terminal protocol and a RS-232 null modem cable connected between the host system and terminal(s). This setting specifies the type of terminal device for console redirection.

► Bits per second, Data Bits, Parity, Stop Bits

This setting specifies the transfer rate (bits per second, data bits, parity, stop bits) of Console Redirection.

► Flow Control

Flow control is the process of managing the rate of data transmission between two nodes. It's the process of adjusting the flow of data from one device to another to ensure that the receiving device can handle all of the incoming data. This is particularly important where the sending device is capable of sending data much faster than the receiving device can receive it.

► VT-UTF8 Combo Key Support

This setting enables/disables VT-UTF8 Combo Key Support.

► **Recorder Mode, Resolution 100x31**

These settings enable/disable the recorder mode and the resolution 100x31.

► **Legacy OS Redirection Resolution**

This setting specifies the redirection resolution of legacy OS.

► **Putty KeyPad**

This setting specifies the type of Putty KeyPad.

► **Redirection After BIOS POST**

This setting specifies the Redirection configuration after BIOS POST.

[Disable]	Turn off the redirection after POST
[Boot Loader]	Set the Redirection to be active during POST and Boot Loader
[Always Enable]	Set the Redirection to be always active

► **Intel TXE Configuration**



Intel TXE Configuration

► **TXE FW Version**

This item displays the TXE firmware version. Read-only.

► **TXE**

This setting enables/disables the TXE function.

► **TXE HMRFPPO**

This setting enables/disables the TXE HMRFPPO (Host ME Region Flash Protection Override) function.

► **TXE Firmware Update**

This setting enables/disables the TXE Firmware Update function.

► **TXE EOP Message**

This setting enables/disables to send EOP Message Before Enter OS.

Intel Anti-Theft Technology**► Intel AT**

This setting enables/disables Intel Anti-Theft Technology.

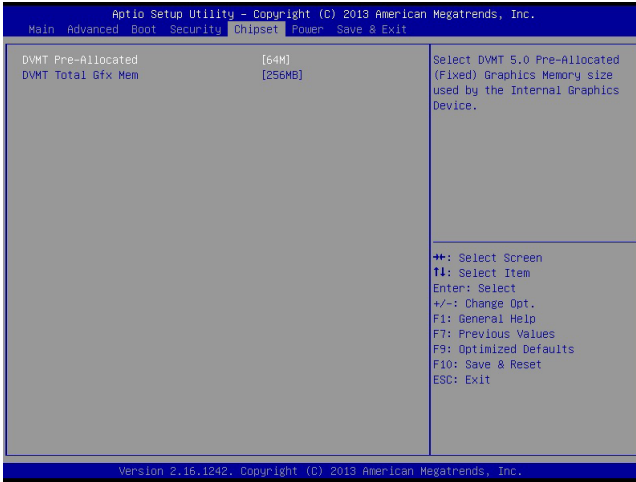
► Intel AT Platform PBA

This setting enables/disables the Pre-Boot Authentication of Intel Anti-Theft Technology.

► Intel AT Platform Suspend Mode

This setting enables/disables the platform suspend mode of Intel Anti-Theft Technology.

Chipset



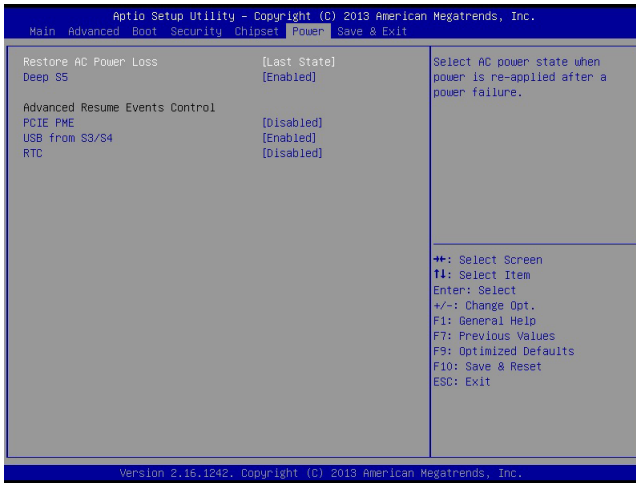
► DVMT Pre-Allocated

This setting defines the DVMT pre-allocated memory. Pre-allocated memory is the small amount of system memory made available at boot time by the system BIOS for video. Pre-allocated memory is also known as locked memory. This is because it is “locked” for video use only and as such, is invisible and unable to be used by the operating system.

► DVMT Total Gfx Mem

This setting specifies the memory size for DVMT.

Power



► Restore AC Power Loss

This setting specifies whether your system will reboot after a power failure or interrupt occurs. Available settings are:

[Power Off]	Leaves the computer in the power off state.
[Power On]	Leaves the computer in the power on state.
[Last State]	Restores the system to the previous status before power failure or interrupt occurred.

► Deep S5

The setting enables/disables the Deep S5 power saving mode. S5 is almost the same as G3 Mechanical Off, except that the PSU still supplies power, at a minimum, to the power button to allow return to S0. A full reboot is required. No previous content is retained. Other components may remain powered so the computer can “wake” on input from the keyboard, clock, modem, LAN, or USB device.

Advanced Resume Events Control

► PCIE PME

This field specifies whether the system will be awakened from power saving modes when activity or input signal of onboard PCIE PME is detected.

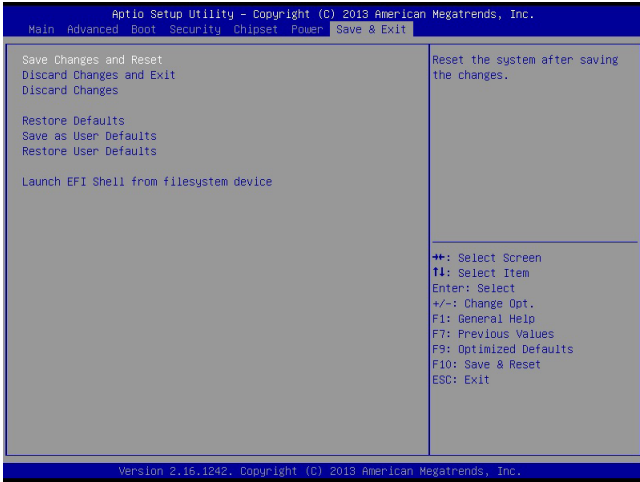
► USB from S3/S4

The item allows the activity of the USB device to wake up the system from S3/S4 sleep state.

► RTC

When [Enabled], you can set the date and time at which the RTC (real-time clock) alarm awakens the system from suspend mode.

Save & Exit



► Save Changes and Reset

Save changes to CMOS and reset the system.

► Discard Changes and Exit

Abandon all changes and exit the Setup Utility.

► Discard Changes

Abandon all changes.

► Restore Defaults

Use this menu to load the default values set by the motherboard manufacturer specifically for optimal performance of the motherboard.

► Save as User Defaults

Save changes as the user's default profile.

► Restore User Defaults

Restore the user's default profile.

► Launch EFI Shell from filesystem device

This setting helps to launch the EFI Shell application from one of the available file system devices.

4 MSI HIDAC Utility



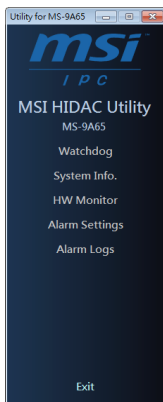
This section introduces the MSI HIDAC utility for overall system monitor and control.

Activating the Utility

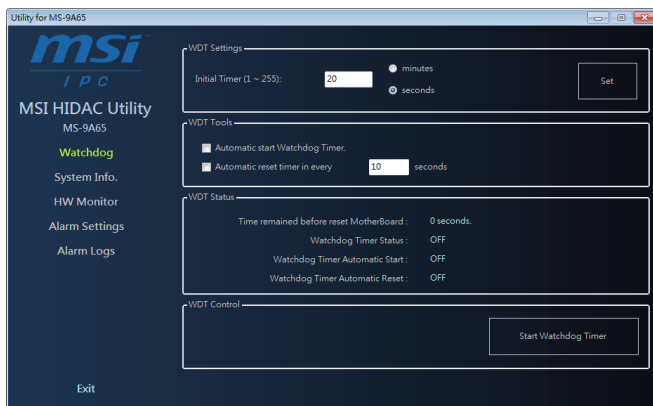
Select [MSI HIDAC Utility] on Desktop to activate the utility.

This MSI HIDAC Utility provides information on:

- Watchdog Timer
- System Information
- Hardware Monitor
- Alarm Settings for Hardware Monitor
- Alarm Logs for Hardware Monitor



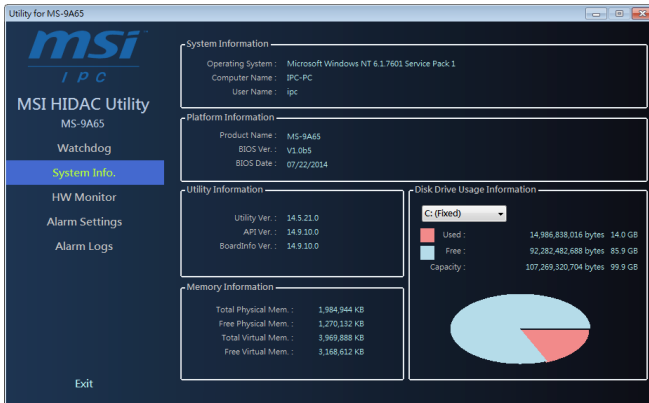
Watchdog



Features:

- Initial Timer configurable through **WDT Settings**
- **WDT Tools** available for automatically activating Watchdog Timer at system boot and automatically resetting timer after a preset time interval
- Real-time display of Watchdog Timer status

System Info.



Features:

- Real-time display of *System Information*, *Platform Information*, *Utility Information*, *Memory Information* and *Disk Drive Usage Information*

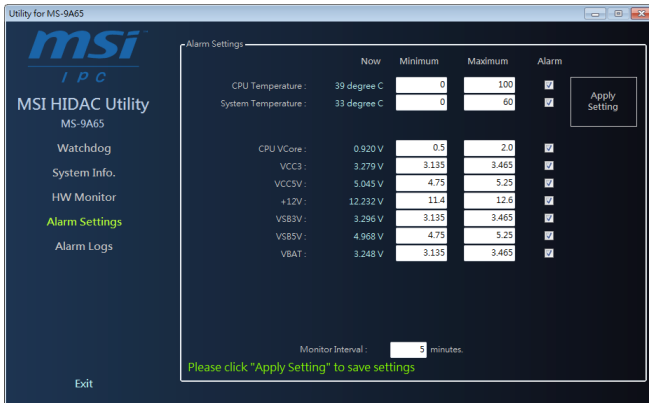
HW Monitor



Features:

- Real-time display of Hardware Monitor status including CPU/system temperatures, fan speeds and CPU/system voltage info

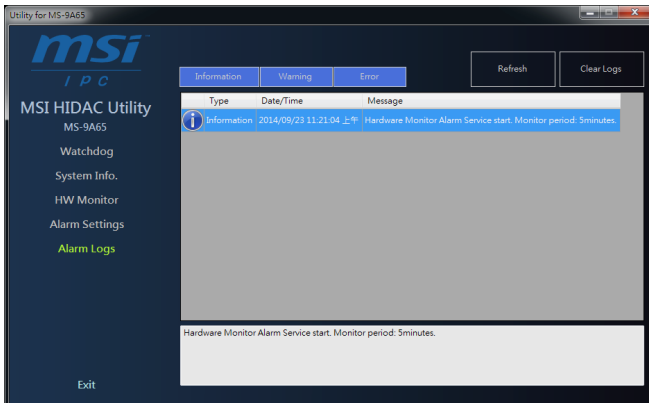
Alarm Settings



Features:

- Custom settings of a tolerance range for the alarm triggers
- Automatic alarm logs of monitored hardware items when the alarm trigger thresholds are exceeded

Alarm Logs



Features:

- Real-time display of Hardware Monitor alarm logs
- Alarm logs sortable by button (*Information*, *Warning* or *Error*)
- Alarm logs clearable through **Clear Logs**

Appendix

WDT



This appendix provides the sample codes of WDT (Watch Dog Timer).

WDT Sample Code

```

SIO_INDEX_Port    equ 04Eh
SIO_DATA_Port     equ 04Fh
SIO_UnLock_Value  equ 087h
SIO_Lock_Value    equ 0AAh
WatchDog_LDN      equ 007h
WDT_UNIT          equ 60h      ;60h=second, 68h=minute, 40h=Disabled watchdog timer
WDT_Timer         equ 30       ;ex. 30 seconds

```

Sample code:

```

;Enable config mode
    mov     dx, SIO_INDEX_Port
    mov     al, SIO_UnLock_Value
    out     dx, al
    jmp     short $+2          ;Io_delay
    jmp     short $+2          ;Io_delay
    out     dx, al
;Change to WDT
    mov     dx, SIO_INDEX_Port
    mov     al, 07h
    out     dx, al
    mov     dx, SIO_DATA_Port
    mov     al, WatchDog_LDN
    out     dx, al
;Active WDT
    mov     dx, SIO_INDEX_Port
    mov     al, 30h
    out     dx, al
    mov     dx, SIO_DATA_Port
    in      al, dx
    or      al, 01h
    out     dx, al
;set timer
    mov     dx, SIO_INDEX_Port
    mov     al, 0F6h
    out     dx, al
    mov     dx, SIO_DATA_Port
    mov     al, WDT_Timer
    out     dx, al
;set UINT
    mov     dx, SIO_INDEX_Port
    mov     al, 0F5h
    out     dx, al
    mov     dx, SIO_DATA_Port
    mov     al, WDT_UNIT
    out     dx, al
;enable reset
    mov     dx, SIO_INDEX_Port
    mov     al, 0FAh
    out     dx, al
    mov     dx, SIO_DATA_Port
    in      al, dx
    or      al, 01h
    out     dx, al
;close config mode
    mov     dx, SIO_INDEX_Port
    mov     al, SIO_Lock_Value
    out     dx, al

```

