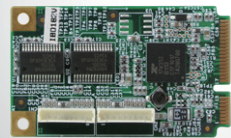


Mini PCI-E Cards with Expansion

1 AGS Series

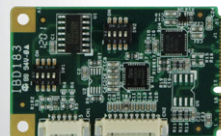
IBD182



Features:

- PCI-E to 2x RS232
- XR17V352 chipset
- 50.95mm x 30mm

IBD183



Features:

- USB to UART,
1x RS232+ 1x RS422/485
- XR21V1412 chipset
- 50.95mm x 30mm

2 AMS Series

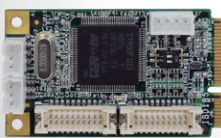
IBD184



Features:

- PCI-E to 4x RS232
- XR17V354 chipset
- 50.95mm x 30mm

IBD185



Features:

- USB to GPIO
- 16-in /16-out
- STM32F103V8 chipset
- 50.95mm x 30mm

3 AMI Series

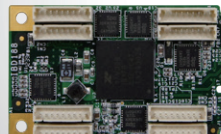
IBD186



Features:

- PCI-E to 2x RS232
w/ Isolation
- XR17V352 &
2x LTM2882CY-3
chipset
- 50.95mm x 30mm

IBD188

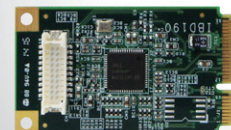


Features:

- PCI-E to 8x RS232
- XR17V358 chipset
- 50.95mm x 30mm

4 CMI Series

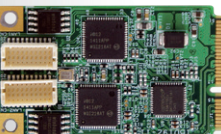
IBD190



Features:

- PCI-E to 1x GbE LAN
- 1x Intel® I211-AT chipset
- 50.95mm x 30mm

IBD192



Features:

- PCI-E to 2x GbE LAN
- 2x Intel® I211-AT or
2x Intel® I210-AT chipset
- 50.95mm x 30mm

5 ASB Series

IBD193



Features:

- PCI-E to MRAM storage
- 1x MR2A16ACYS35 chipset
- 50.95mm x 30mm

IBD194



Features:

- USB to 2nd VGA Display
- Resolution up to 1920x
1080 (Max.)
- DisplayLink DL-165
chipset
- 50.95 mm x 30 mm

6 CSB Series

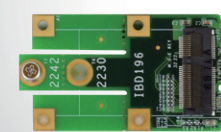
IBD195



Features:

- PCI-E to 2x CAN Bus
- Dual channel isolation
- 50.95mm x 30mm

IBD196



Features:

- Mini-PCI-E to M.2 E key
- 54.5mm x 30mm