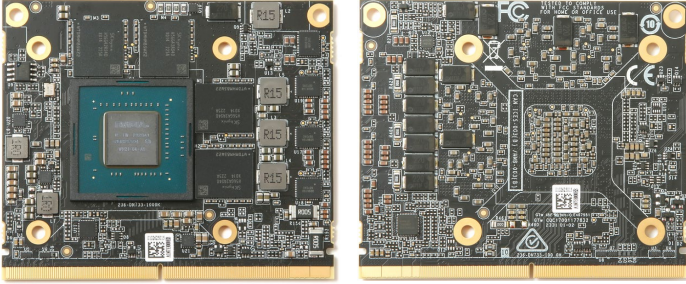


AI Accelerator & GPU

Preliminary

MXM Module MX2000A-VP



Features

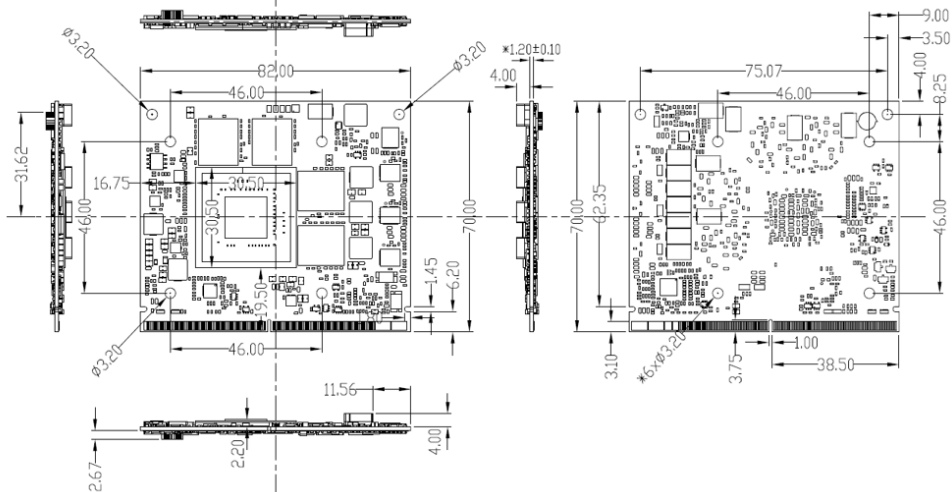
- NVIDIA RTX 2000 embedded graphics based on NVIDIA Ada Lovelace architecture
- 3072 CUDA cores, 24 RT cores and 96 Tensor cores, 8GB GDDR6 memory
- PCIe Gen 4 x8 interface
- 12.99 TFLOPS peak FP32 performance

Specifications

Model Number	MX2000A-VPA-A1
GPU Engine Specs	NVIDIA RTX 2000 Architecture: NVIDIA Ada Lovelace CUDA Cores: 3072 Tensor Cores: 96 RT Cores: 24 Floating Point Performance: 12.99 TFLOPS Core Clock (MHz): Base= 1635 / Boost= 2115
Memory Specs	Size: 8GB GDDR6 Speed: 16 Gbps Interface Width: 128-bit Bandwidth (GB/sec): 256
Feature Support	PCI Express 4.0 x8 DirectX: 12 Ultimate Open GL 4.6 Vulkan 1.2
Display	Resolution: 7680x4320 ¹ Max: 3x DisplayPort 1.4a
Power Consumption	Total Graphics Power (TGP): 60 W
Form Factor	MXM Graphics Module Version 3.1, Type A
Dimensions (WxD)	82.0 x 70.0 mm (3.22" x 2.75")
Net Weight	0.037 kg (0.082 lb)
Vibration	2.4Grms, @5~500 Hz, Sine, 0.5Hr/axis
Temperature	Standard: Operating Temp. :0 to + 55°C (32°F ~131°F) / Extended Operating Temp. : -40 to + 85°C (-40°F ~185°F) / Storage Temperature: -40 to + 85°C (- 40°F ~ 185°F)
Humidity	95% @ 40°C Related Humidity, Non-condensing
OS Support	Windows 10/11 64-bit
Certification	CE/FCC/UKCA

1. Up to 4k 12-bit HDR at 240Hz with DP1.4a+DSC. Up to 8k 12-bit HDR at 60Hz with DP 1.4a+DSC or HDMI2.0+DSC. With dual DP1.4a+DSC, up to 8K HDR at 120Hz. HDCP 1.2/1.4. (eDP, LVDS, VGA, USB-C display output are not supported)

System & Mounting Dimensions



Ordering Information

Model name	Description
MX2000A-VPA-A1	MXM-A, NVIDIA RTX 2000 ADA, Gen4.0 x8, 8GB GDDR6, DP, 60W, 0°C to +55°C

Accessory (Optional)

Part No.	Description
92-6MXM4H-1001	PCIE Carrier Board, MXM3.1, Gen4.0 x16, 4x HDMI, 0°C to +55°C (MXM-A04)
3906000000S010	MXM-A Cooler, TWO BALL, 12V 4PIN, L:200mm 6000RPM, 72*62*27.65mm, AL6063, 0°C to +55°C