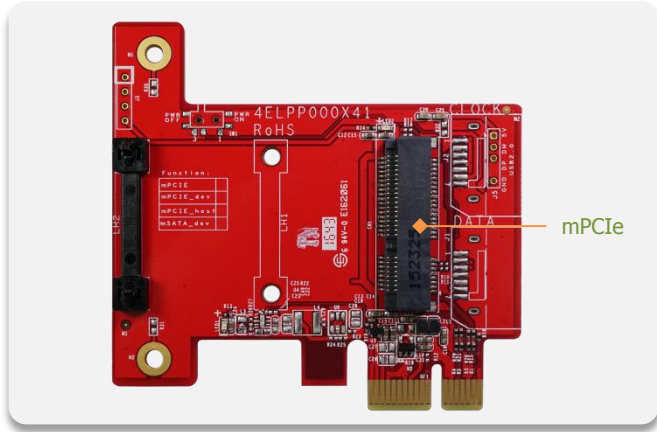


ELPP-0101

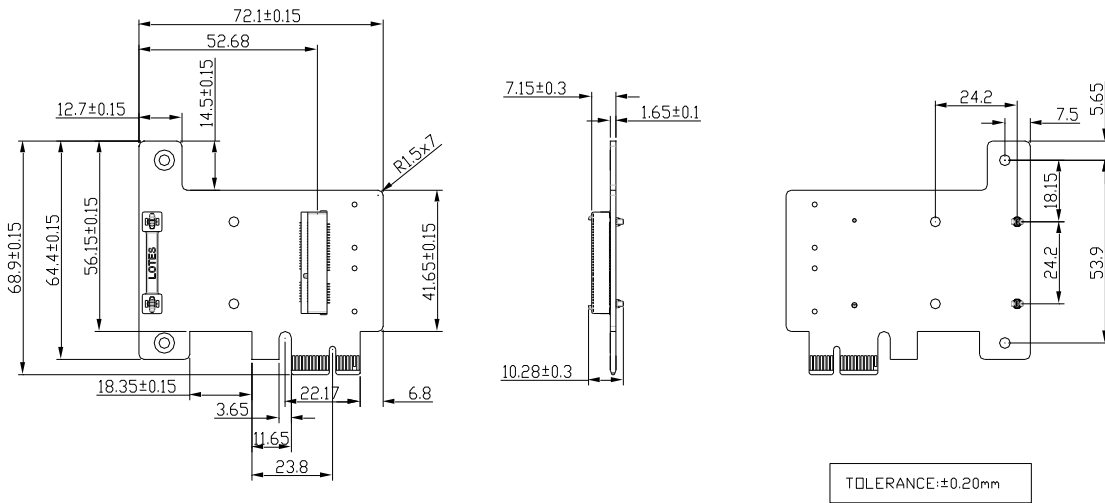
PCIe x 1 to mPCIe Module



Features

- PCI-Express specification Rev. 2.0 compliant
- PCIe x1 to mPCIe pass-through design
- 3 years warranty
- Industrial design. Manufactured in innodisk Taiwan

Mechanical Drawing



Specifications

Headquarters (Taiwan)

5F., No. 237, Sec. 1, Datong Rd.,
Xizhi Dist., New Taipei City 221,
Taiwan
Tel: +886-2-77033000
Email: sales@innodisk.com

Branch Offices:

USA

usasales@innodisk.com
+1-510-770-9421

Europe

eusales@innodisk.com
+31-040-282-1818

Japan

jpsales@innodisk.com
+81-3-6667-0161

China

sales_cn@innodisk.com
+86-755-21673689

Form-Factor	Low profile PCIe
Input I/F	PCIe 2.0 x1
Output I/F	PCIe 2.0 x1
Output Connector	mPCIe x 1
Dimension (WxLxH)	72.1 x 68.9 x 10.2mm
Temperature	Operation: STD: 0°C ~ +70°C Storage: -55°C ~ +95°C
Environment	Vibration: 5G @7~2000Hz, Shock: 50G @ 0.5ms
Notes	

Order information

ELPP-0101-C2
PCIe x1 to mPCIe Module

www.innodisk.com

© 2017 Innodisk Corporation.
All right reserved. Specifications
are subject to change without
prior notice.

January 17, 2017