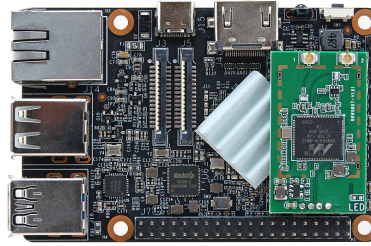


ACP-3566-PI

3.5" SBC, the Alternative of Raspberry Pi



Product Features

- Rockchip RK3566 with Quad-core Cortex-A55 up to 1.8GHz
- Support 40P GPIO and can be configured as rich expansion interfaces such as RS232, GPIO, SPI and I2C. It also built-in Gigabit Ethernet port, supports BT / Wi-Fi and IR
- With built in eMMC design, faster read and write speed than RPi
- Support HDMI 4K output display, MIPI-DSI and MIPI-CSI video input and output
- Small Size 85 mm * 55 mm
- Long life cycle guarantee and sufficient supply than RPi

Specification

System Information

Processor RockChip RK3566 Quad-core Cortex-A55

System Memory 2 GB

Storage

Storage 16 GB eMMC

Power Requirement

DC Input DC 5V

Software Support

OS Linux Debian 11

Certification

Certification Information CE, FCC Class B

I/O

External I/O Connector 1 x 10/100/1000 RJ45 Powered LAN
 1 x HDMI 2.0 Out
 2 x USB 2.0 Type B
 1 x USB 2.0 Type B OTG
 1 x USB 3.0 Type A
 1 x PWR IN

Internal I/O Connector	28 x GPIO 1 x TF Card 1 x WIFI 802.11 a/b/g/n/ac 1 x MIPI CSI 1 x MIPI DSI
-------------------------------	----------------------------------------------------------------------------------------

Mechanical & Environmental

Operating Temp.	Commercial: 0 ~ 80°C (32 ~ 176°F)
------------------------	-----------------------------------

Storage Temp.	0°C ~ 60°C (32°F ~ 140°F)
----------------------	---------------------------

Weight	0.16 kg
---------------	---------

Dimension (L x W)	85 x 55 mm
--------------------------	------------

Ordering Information

Ordering Information	ACP-3566-PI
-----------------------------	-------------
