

Intelligent Point-of-Care Terminal

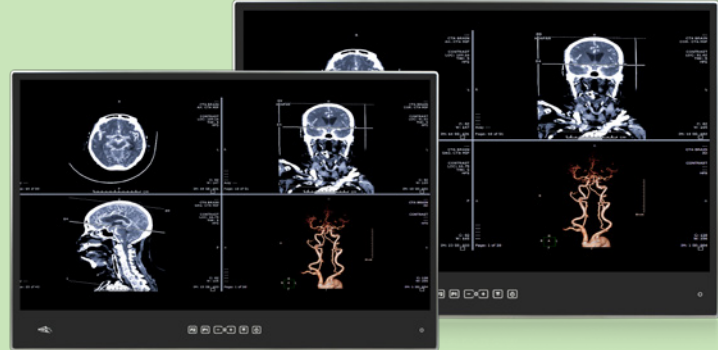
NEW

POCi-W22C-ULT5
POCi-W24C-ULT5

22" / 24" Medical Panel PC with 8th Generation Intel® mobile ULT Core™ i7/i5 processor

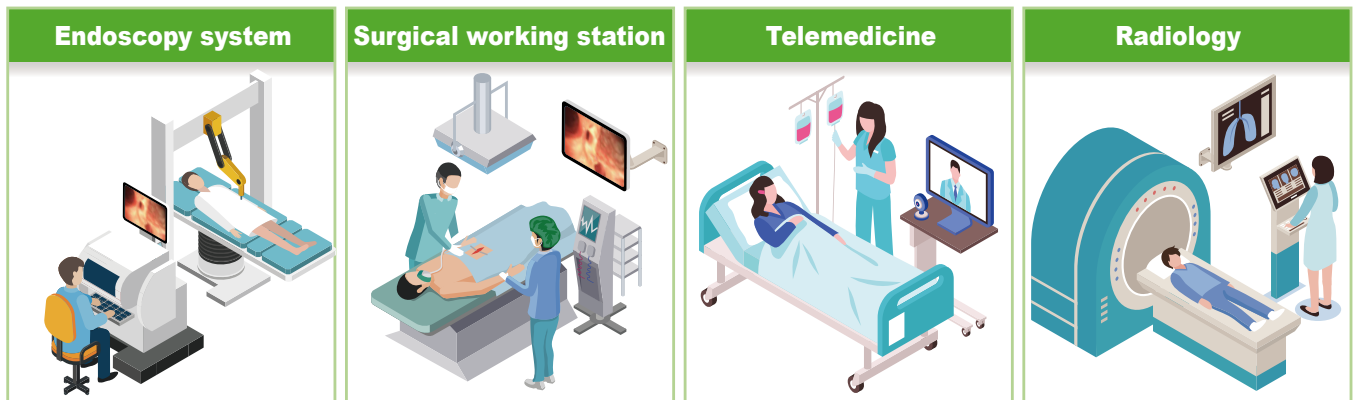
Features

- Dual reading light
- Chemical etching AG coating
- Modular PCIe x4 expansion slot
- Aluminum front bezel (IP66) & PC/ABS rear cover
- FHD IPS panel with optional DICOM preset module
- 14nm 8th generation Intel® Whiskey Lake U platform



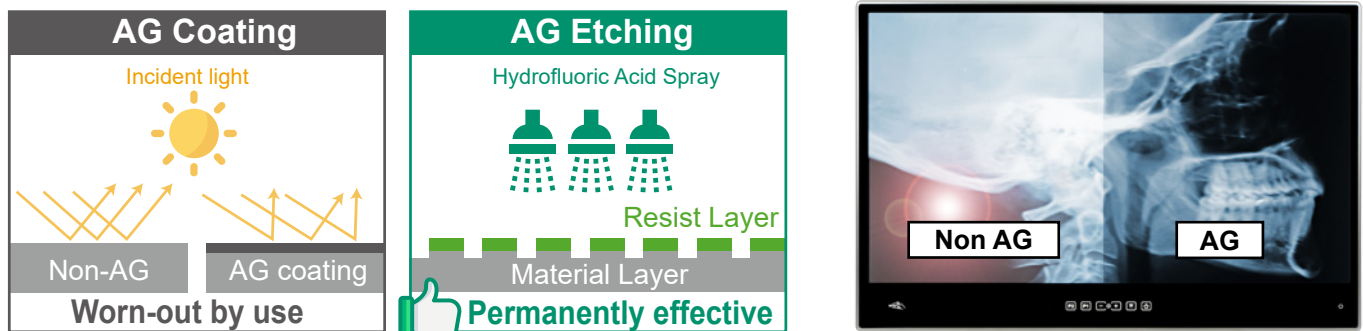
• Intelligent Working Station

The POCi series is a medical panel PC featuring AI, edge computing with rich expansion functions. It is ideal to work in many kinds of medical scenario such as radiology, telemedicine, endoscopy system or surgical working station.



• IPS Panel with Chemical Etching AG Coating Glass

High-performance IPS panel enables a wider 178° viewing angles and advanced visual performance. The chemical etching AG coating reduces the watching fatigue resulting from glare or any other light interference in different kinds of environments.



» Intelligent Point of Care Terminal

● Ultra-slim Aluminum Front Bezel

The ultra-slim front bezel creates a premium user experience. This design lets the medical personnel more focus on the clinical information displayed on the screen.



● Optional DICOM Preset

The way the human eye responds to contrasts in light levels is not linear. At low levels, we can notice small changes in luminance. At higher luminance, the change needs to be much greater before we perceive the difference from one level to the next. Calibration of the display system is important to ensure that each image is shown consistently every time it is viewed.

* To order the POCi series with DICOM module, please contact IEI's product manager for more information.



● Dual Reading Lights

The IEC 62471 compliant LEDs assure the reading light emits comfortable and safe light for human eyes. Easy adjustable dimming interface allows the user to choose the best brightness in different situations.



● Isolated I/O Ports

These 1.5kV isolated COM & LAN ports are compliant to the MOOP classification and use UL94 V-0 Flammability Standard Mylar® sheet insulation.



● ESD Protection

IEI provides Electrostatic discharge (ESD) 15kV (air) and 8kV (contact) ESD Protection. It can protect the circuit of a device from an Electrostatic discharge (ESD), in order to prevent malfunction of device.

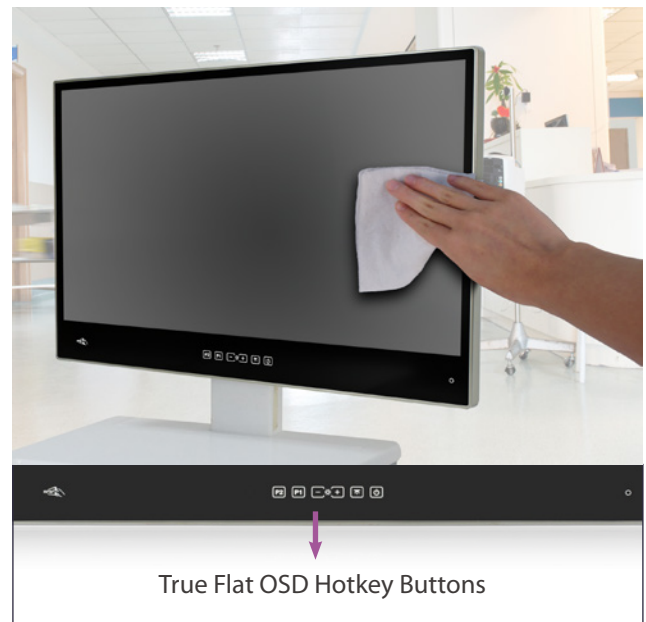
● Chemical Resistance for Easy Sterilization

Sterilization is a daily routine of hospitals. Aluminum front frame is not only lightweight but also very durable for chemical erosion. The PC/ABS back cover is also carefully selected and proved to be resistant to the commonly seen detergents.



● IP Protection

IP66 front bezel and cover are easy to be cleaned with cleaners.

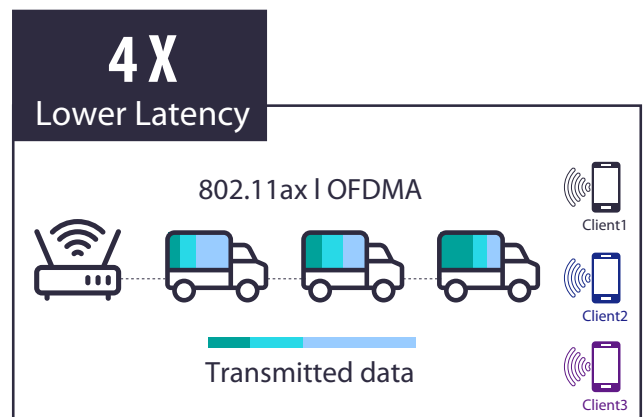
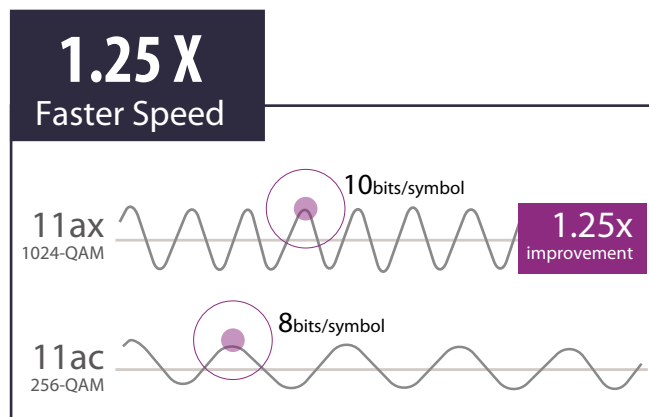
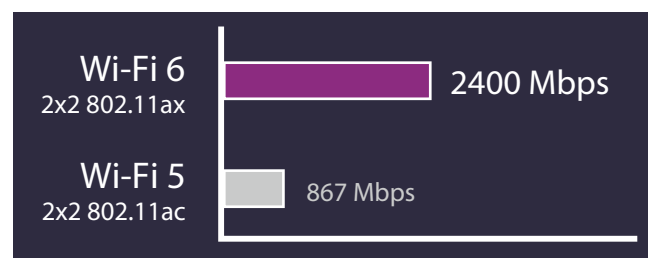


● True Flat OSD Hotkey Buttons

True flat OSD button design with no inaccessible corner brings conveniences for the cleaning personnel and increases cleaning efficiency.

● Wi-Fi 6 Module

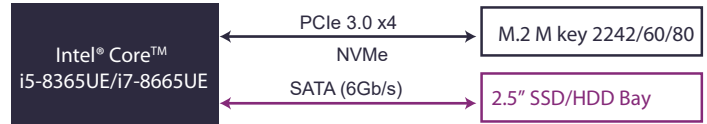
The POCi-W22/24C-ULT5 supports the latest Wi-Fi 6 standard which enables more clients in dense environments and will provide a better experience for typical wireless LAN networks.



● Storage Device

The POCi-W22C-ULT5 provides flexible options for storage

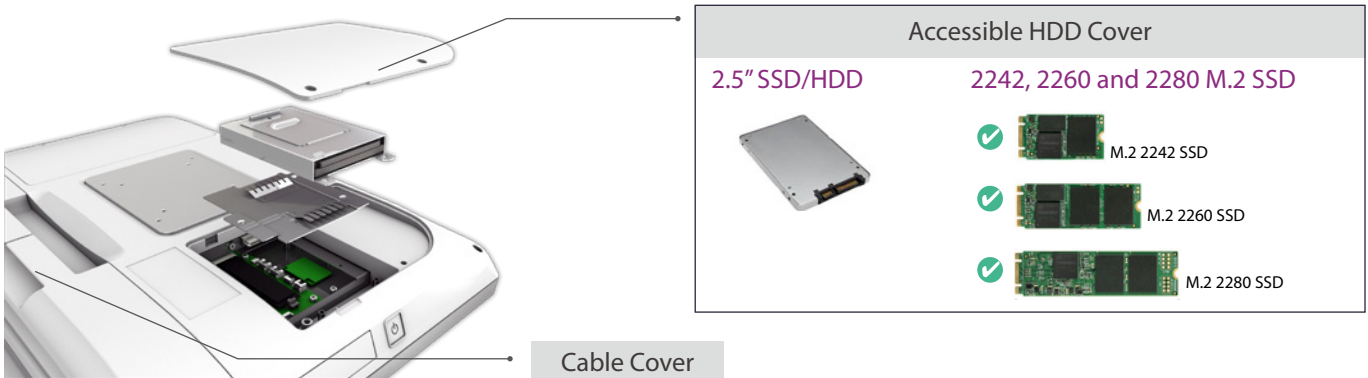
- 2.5" HDD/SSD
- M.2 M key slot for NVMe, up to PCIe 3.0 x4



Interface	Bandwidth	
M.2 SATA 6Gb/s	Mainstream	6Gb/s
M.2 PCIe 2.0 x2		1.0GB/s
M.2 PCIe 3.0 x4		3.94GB/s

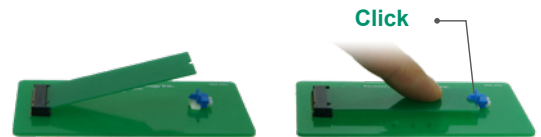
● Accessible HDD Cover & Cable Cover

Users can easily manage all the cables from the I/O ports, preventing splash to IO ports or messy cabling. Accessible HDD cover makes the IT maintenance job more efficient.



● Click-to-fix M.2 Slot

Special click-to-fix plunger design makes the M.2 replacing work much more convenient and prompt.



● Modular Expansion Design

The highly expandable PCIe x4 slot makes the whole system more flexible and easily meet the individual needs from different applications. For instance, adopting the AI accelerator card to enhance computing power, adding an all-in-one capture card to connect with medical devices, integrating PoE injector card with webcam, or expanding the desired I/O card for multiple usage.



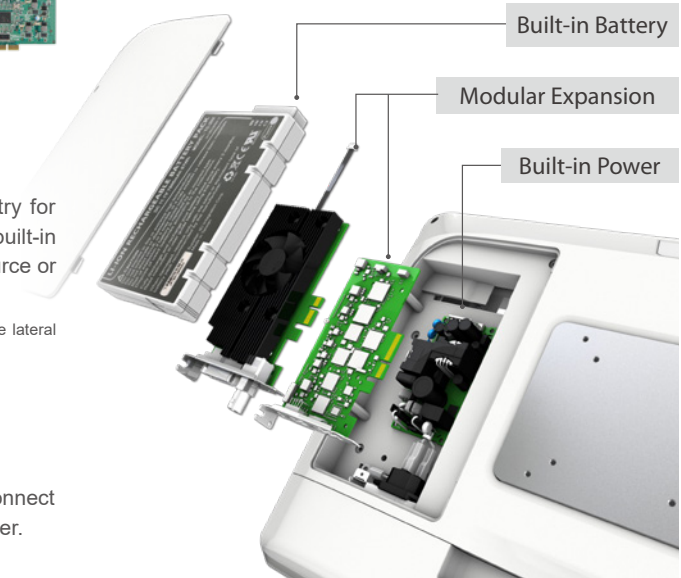
● Optional Built-in Battery

Uninterruptible Power System (UPS) is widely used in medical industry for securing patient's safety. The lateral expansion slot is available for a built-in battery which provides emergency power for 60 mins when the input source or main power fails under unexpected events.

* This feature needs to be requested before product shipment only and it will interfere with the lateral PCIe x4 expansion slot.

● Optional Built-in Power

To implement the built-in medical-grade power supply system, simply connect the power cord to the system without the use of an external power adapter.



Specifications

Model	POCi-W22C-ULT5		POCi-W24C-ULT5		
LCD Specifications	LCD Size	21.5" (16:9)		23.8" (16:9)	
	Max. Resolution (W/H)	1920 x 1080			
	Brightness (cd/m ²)	350			
	Contrast Ratio	1000:1			
	LCD Color	16.7M (RGB 6-bit + Hi-FRC)			
	Pixel Pitch (H/V)	0.24795 x 0.24795 mm	0.2745 x 0.2745 mm		
	Viewing Angle (H/V)	178°/178°			
	Backlight MTBF (hrs)	30,000 (LED backlight)			
Touch	Touchscreen	Projected capacitive type with 10-point multi-touch			
	Touch Controller	EETI (80H84)			
	Surface Hardness	6H			
	Coating	Chemical AG etching			
System	CPU Support	Intel® Core™ i5-8365UE (Whiskey Lake ULT platform) Intel® Core™ i7-8665UE (Whiskey Lake ULT platform)			
	LAN Controller	1 x Intel® I211 Ethernet Controller 1 x Intel® I219 Ethernet Controller (AMT 12.x supported by i7/i5 SKUs)			
	RAM	2 x 260-pin 2400/2133MHz dual-channel DDR4 SO-DIMM, 4GB pre-installed (system max. 64GB)			
	Storage	1 x M.2 2242/60/80 M key (PCIe x4) 1 x 2.5" accessible SATA HDD/SSD bay			
	Audio	2 x 2W speaker			
	I/O Port	Bottom 1 x DC jack 1 x HDMI output 1 x Isolated 1.5kV RS-232 1 x Combo audio-out/mic-in 1 x Isolated Gigabit LAN (I211) 1 x Isolated Gigabit LAN (I219 supports Intel® vPro) 4 x USB 3.2 Gen 2 (10Gb/s) port	Side 2 x USB 2.0 port		
	OSD Function	1 x Power on/off 1 x Reading light on/off 1 x Brightness up 1 x Brightness down	1 x LCD & touch lock on/off 1 x DICOM mode app on/off (optional)		
	Expansion	1 x PCIe x4			
	LED	1 x RFID indicator (optional) 2 x LED reading light			
	Wi-Fi & Bluetooth	IEEE 802.11ax 2T2R module (Wi-Fi 6) with BT v5.0 (M.2 2230 A-E key)	IEEE 802.11ax 2T2R module (Wi-Fi 6E) with BT v5.0 (M.2 2230 A-E key)		
	Physical	Construction Material	Front bezel: Aluminum die-casting Rear cover: ABS+PC plastic (chemical resistant)		
		Mounting	Wall, Stand and Arm; VESA 75/100 compliant		
		Weight (Net)	6.9 kg	8.1 kg	
Dimensions (LxWxH)		507.5 x 335.5 x 64.5 mm	567 x 370.6 x 63.9 mm		
Environment	Operating Temperature	0°C – 40°C			
	Storage Temperature	-20°C – 60°C			
	Humidity	10% – 95% (non-condensing)			
	Vibration	1G			
	Shock	Operating shock: 5G peak acceleration (11ms duration) Non-operating shock: 15G peak acceleration (11ms duration)			
	IP Level	Front: IP66			
	Thermal	Fanless			
Power	Power Input	19V DC input			
	Power Adapter	150W medical power adapter			
	Battery	3S3P Li-ion battery pack, 11.1V, 7800mAh (optional)			
	Built-in Medical Power	150W, 85V – 264V AC, medical power supply (optional)			
Certification	EMC & Safety CE, FCC Class B Part18 EN 60601-1: 2006/A1:2013 (Edition 3.1) EN 60601-1-2: 2015 (Edition 4.0)				

Ordering Information

Part No.	Description	
22"	POCi-W22C-ULT5-i5/PC/4G-R10	21.5" 350cd/m ² FHD medical panel PC with 8th generation 14nm Intel® mobile Core™ i5-8365UE (15W) 1.6GHz on-board processor (ULT), one 4GB DDR4 RAM, 802.11ax Wi-Fi module, PCAP touchscreen w/ AG coating, R10
	POCi-W22C-ULT5-i5/PC/4G-B-R10 *	21.5" 350cd/m ² FHD medical panel PC with 8th generation 14nm Intel® mobile Core™ i5-8365UE (15W) 1.6GHz on-board processor (ULT), one 4GB DDR4 RAM, 802.11 ax Wi-Fi module, PCAP touchscreen w/ AG coating, w/ battery, R10
	POCi-W22C-ULT5-i5/PC/4G-BP-R10 *	21.5" 350cd/m ² FHD medical panel PC with 8th generation 14nm Intel® mobile Core™ i5-8365UE (15W) 1.6GHz on-board processor (ULT), one 4GB DDR4 RAM, 802.11 ax Wi-Fi module, PCAP touchscreen w/ AG coating, w/ built-in power, R10
	POCi-W22C-ULT5-i7/PC/4G-R10 *	21.5" 350cd/m ² FHD medical panel PC with 8th generation 14nm Intel® mobile Core™ i7-8665UE (15W) 1.7GHz on-board processor (ULT), one 4GB DDR4 RAM, 802.11 ax Wi-Fi module, PCAP touchscreen w/ AG coating, R10
	POCi-W22C-ULT5-i7/PC/4G-B-R10 *	21.5" 350cd/m ² FHD medical panel PC with 8th generation 14nm Intel® mobile Core™ i7-8665UE (15W) 1.7GHz on-board processor (ULT), one 4GB DDR4 RAM, 802.11 ax Wi-Fi module, PCAP touchscreen w/ AG coating, w/ battery, R10
	POCi-W22C-ULT5-i7/PC/4G-BP-R10 *	21.5" 350cd/m ² FHD medical panel PC with 8th generation 14nm Intel® mobile Core™ i7-8665UE (15W) 1.7GHz on-board processor (ULT), one 4GB DDR4 RAM, 802.11 ax Wi-Fi module, PCAP touchscreen w/ AG coating, w/ built-in power, R10
24"	POCi-W24C-ULT5-i5/PC/4G-R10	23.8" 350cd/m ² FHD medical panel PC with 8th generation 14nm Intel® mobile Core™ i5-8365UE (15W) 1.6GHz on-board processor (ULT), one 4GB DDR4 RAM, 802.11 ax Wi-Fi module, PCAP touchscreen w/ AG coating, R10
	POCi-W24C-ULT5-i5/PC/4G-B-R10 *	23.8" 350cd/m ² FHD medical panel PC with 8th generation 14nm Intel® mobile Core™ i5-8365UE (15W) 1.6GHz on-board processor (ULT), one 4GB DDR4 RAM, 802.11 ax Wi-Fi module, PCAP touchscreen w/ AG coating, w/ battery, R10
	POCi-W24C-ULT5-i5/PC/4G-BP-R10 *	23.8" 350cd/m ² FHD medical panel PC with 8th generation 14nm Intel® mobile Core™ i5-8365UE (15W) 1.6GHz on-board processor (ULT), one 4GB DDR4 RAM, 802.11 ax Wi-Fi module, PCAP touchscreen w/ AG coating, w/ built-in power, R10
	POCi-W24C-ULT5-i7/PC/4G-R10 *	23.8" 350cd/m ² FHD medical panel PC with 8th generation 14nm Intel® mobile Core™ i7-8665UE (15W) 1.7GHz on-board processor (ULT), one 4GB DDR4 RAM, 802.11 ax Wi-Fi module, PCAP touchscreen w/ AG coating, R10
	POCi-W24C-ULT5-i7/PC/4G-B-R10 *	23.8" 350cd/m ² FHD medical panel PC with 8th generation 14nm Intel® mobile Core™ i7-8665UE (15W) 1.7GHz on-board processor (ULT), one 4GB DDR4 RAM, 802.11 ax Wi-Fi module, PCAP touchscreen w/ AG coating, w/ battery, R10
	POCi-W24C-ULT5-i7/PC/4G-BP-R10 *	23.8" 350cd/m ² FHD medical panel PC with 8th generation 14nm Intel® mobile Core™ i7-8665UE (15W) 1.7GHz on-board processor (ULT), one 4GB DDR4 RAM, 802.11 ax Wi-Fi module, PCAP touchscreen w/ AG coating, w/ built-in power, R10

* By order production

** To order the POCi series with DICOM module, please contact IEI's product manager for more information.

Options

Item	Part No.	Description
RFID1	19B00-000430-00-RS	Mifare RFID reader for POCi-W22C-ULT5, 13.56MHz, Z641, RFID board + antenna, IEI assembly only
	19B00-000426-00-RS	Mifare RFID reader for POCi-W24C-ULT5, 13.56MHz, Z686, RFID board + antenna, IEI assembly only
RFID2	19B00-000425-00-RS	RFID reader for POCi-W22C-ULT5, 125KHz, IEI assembly only
RFID3	27765-000001-RS	RFID reader for POCi-W24C-ULT5, 13.56MHz and 125KHz dual band, IEI assembly only
TPM	TPM-IN03-R10	20-pin Infineon SPI TPM 2.0 module, software management tool, firmware V7.63
OS Image	POCi-W22C-W10E64-V-R10	OS image with Windows Embedded Standard 10 E Value 64-bit 2019 for POCi-W22C/W24C Series
Cable Cover	43106-4327K8-00-RS	Cable cover for POCi-W22C, white, plastic, R10, IEI assembly only
	43106-4335K8-00-HF	Cable cover for POCi-W24C, white, plastic, R10, IEI assembly only
Battery	31603-000069-RS	3S3P Li-ion battery pack, 11.1V, 7800mAh, ATO only, CCL, RoHS

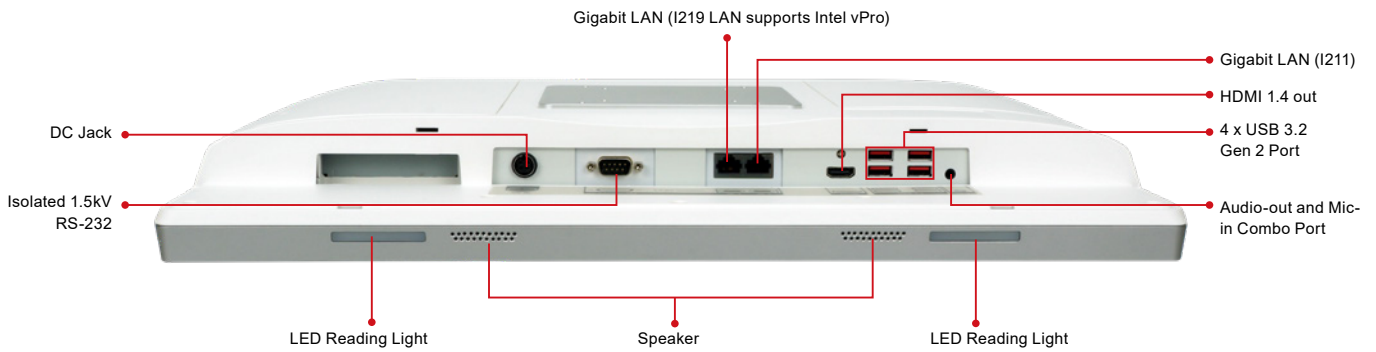
IQ Mounting Options

Item	Part No.
Stand	STAND-A21-R10 (black)
	STAND-A21W-R10 (white)

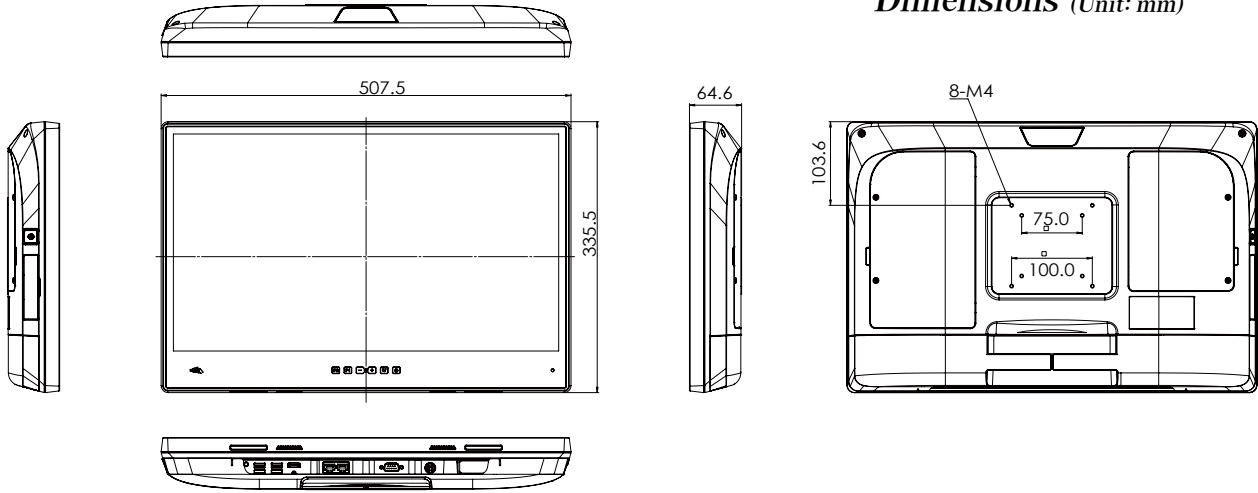
Packing List

Item	Q'ty	Remark
Power Adapter	1	150W medical power adapter
Power Cord	1	European power cord, 183 cm, C13

POCi-W22C-ULT5 / POCi-W24C-ULT5
I/O Interface



POCi-W22C-ULT5
Dimensions (Unit: mm)



POCi-W24C-ULT5
Dimensions (Unit: mm)

