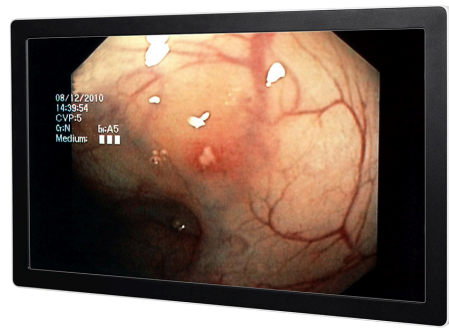


MSBP2712AMC

27" Medical Display High-brightness 4K version



Product Features

- IP65 in front & IPx1 whole unit
- ALS(optional)
- Calibration mode(optional)
- DIN6868-157 compliant(optional)
- 20 meter DVI/15 meter HDMI long cable solution
- IP65 in front & IPx1 whole unit
- ALS(optional)
- Calibration mode(optional)
- DIN6868-157 compliant(optional)
- 20 meter DVI/15 meter HDMI long cable solution

Specification

Audio

Audio Amplifier 5WX2 (optional)

Certification

Certification Information CE(IEC/EN60601-1:ed3.1,IEC/EN60601-1-2)
FCCB

Panel

Pixel pitch 0.3114 mm x 0.3114mm

Viewing angle 89/89 Deg. Horizontal &Vertical

Response time 14 ms

Backlight LED

Touch Type Projective capacitive multi-touch up to 10 points

LCD Size 27"

Display Type 4K

| | |
|----------------------------|---|
| Display color | 1.07 B |
| Resolution | 1920 x 1080 |
| Contrast ratio | 1000 |
| Luminance | 850 cd/m2 |
| DICOM compliant | Ambient light 0/0.5/1/1.5/2/2.5/3 nits (optional) |
| Active display area | 597.9 mm x 336.3mm |

I/O

| | |
|-----------------------------------|---|
| Input Interface | 1 x VGA 1 x DVI 1 x HDMI 1 x Display port |
| Digital input | Standard DVI connector |
| Analog input | Video: 0.7Vpp/75 ohm, Sync: Separate TTL level. Composite Sync or sync on green, Hor: 30~92KHz, Ver: 50~85Hz |
| Cables | 15 pin D-sub cable*1, Optional: DVI cable |
| Plug & play | VESADDC2B |
| User control and indicator | Sensor keys multi-language OSD&Power indicator*1 : contrast, brightness, auto adjust, clock, phase, color temp, hor position, ver position, input select , key lock |

Mechanical & Environmental

| | |
|--------------------------|---|
| VESA | 200 x 200 |
| Weight | 8 kg |
| Construction | GM Metal/Plastic |
| Power Requirement | AC/DC Adapter Input: 100~250Vac, 1A, 60/50Hz Output: 24V, 3.75A |
| Power Mode | 24V DC in |
| Dimension | 660.2mm x 408.8mm x 65.8mm |
| IP Rating | IPX1 |
| Base stand | Tilt adjustable (optional) |
| Power consumption | On:<60W; active off: <5W |
| Power management | EPA Energy Star compliant |

Color Mode

Color temperature Cool/neutral/warm/user

gamma 1.8/2.0/2.2/2.4/linear

Calibration mode Communication protocol is ready to calibrate the monitor through
USB (optional)
