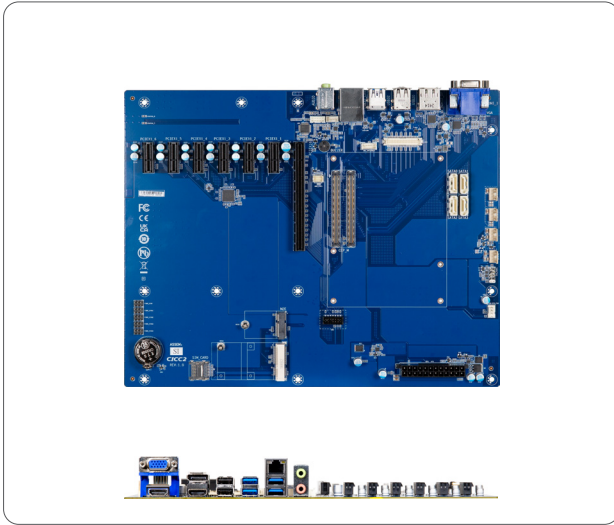


E6-EVBB (CICC2)

COM Express Type 6 Evaluation board



Features

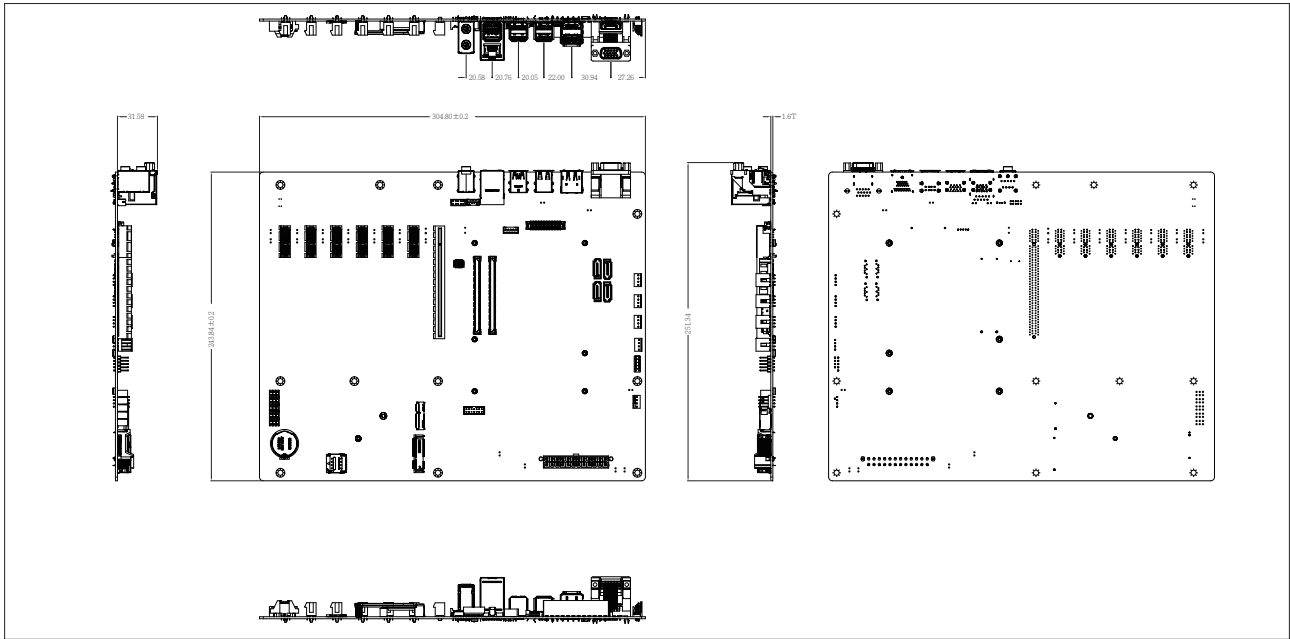
- ATX Form Factor
- PICMG COM Express® R3.0 Type 6 pinout compatible
- HDMI, DP, VGA, LVDS ports for multiple display
- 1 x PCIe x16 expansion slot
- 6 x PCIe x1 expansion slot
- 2 x USB 2.0
- 4 x USB 3.2 Gen 1

Specifications

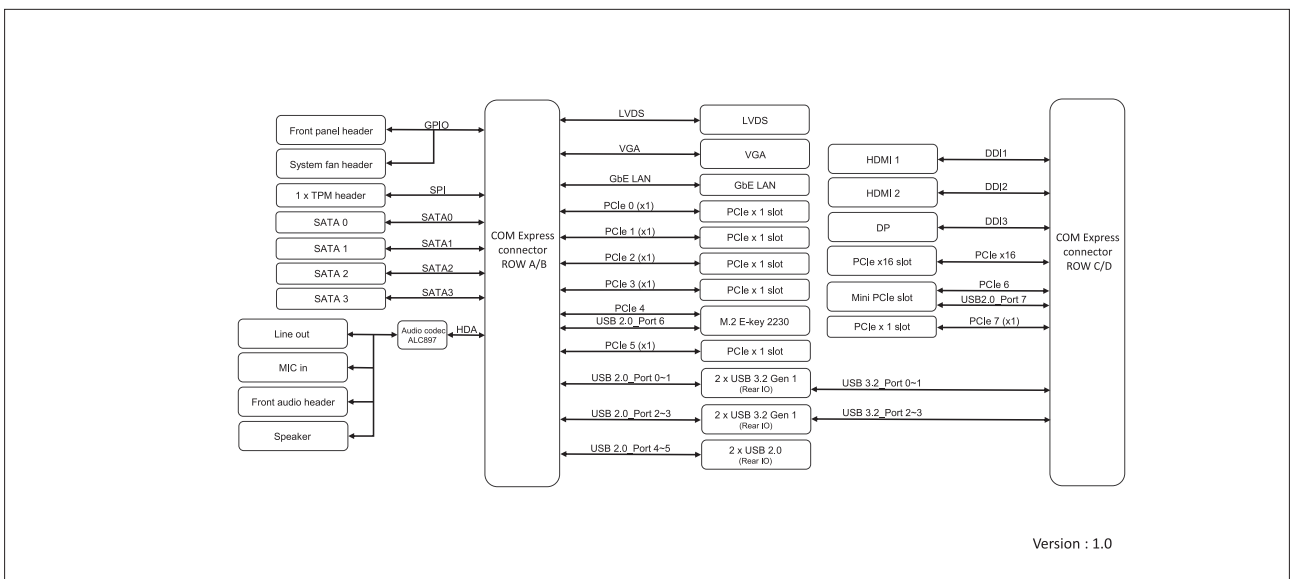
Form Factor	ATX form factor 305W x 244D (mm)
Compatible models	PICMG COM Express® R3.0 Type 6 pinout compatible
Ethernet	1 x GbE LAN Port
Graphics	Integrated Graphics Processor: 2 x HDMI 2.0 port 1 x DP port 1 x LVDS port 1 x VGA port (3 independent display outputs)
Audio	Realtek® ALC897
Storage	4 x SATA 6Gb/s Ports
Expansion Slots	1 x PCIe x16 6 x PCIe x1 1 x 2230 M.2 E-Key 1 x Full-size Mini PCIe with SIM slot
Internal I/O	1 x 24 pin ATX main power connector 4 x SATA Power connectors 1 x System fan header 1 x Front panel header 1 x Front panel audio header 1 x Backlight Control header 1 x Speaker out header 1 x TPM header 1 x Buzzer
Rear I/O	2 x Audio Jacks (Line out, Mic in) 2 x HDMI 1 x VGA 1 x DP 1 x RJ45 LAN Port 4 x USB 3.2 Gen 1 2 x USB 2.0
Operating Properties	Operating temperature: 0°C to 60°C Operating humidity: 0-90% (non-condensing) Non-operating temperature: -40°C to 85°C Non-operating humidity: 0%-95% (non-condensing)

Packing Content	Carton size: 679 x 430 x 399 (mm) Packing Capacity: 10pcs
	Single Box size: 360 x 330 x 80 (mm) Including: IO Shield x 1 (P/N: 12AIO-CICC20-00R) SATA Cable x 1 (P/N: 12CF1-2SAT1B-01R) Standoff Screw x 4 (P/N: 25KSC-720020-G0R)
Order Information	9CICC2MR-SI (Box packing)

GIGAIPC reserves the right to modify or change technical data without prior notice.



Block Diagram



GIGAIPC reserves the right to modify or change technical data without prior notice.