

HUK-CR680

COM-HPC Client Type Size C Module

Quick Installation Guide

Version 1.00

January, 2024

Features

- Support LGA1700 Intel® Alder Lake-S / Raptor Lake-S / Raptor Lake-S Refresh desktop processor
- Two 4800 MHz DDR5 SO-DIMM slots, up to 64GB
- Support DDI and eDP for display; dual SATA 6Gb/s for storage
- Support two 2.5GbE via Intel® I226-LM and I226-V
- Support PCIe Gen5 x16, four PCIe Gen4 x4, one PCIe Gen3 x4, and up to six PCIe Gen3 x1
- UART, 12-bit GPIO, SMBus/I²C and up to 11 USB including USB 3.2 Gen2

Packing List

- 1 x HUK-CR680 module
- 1 x Heatsink cooler
- 1 x QIG (Quick Installation Guide)

Jumpers & Connectors

J_CMOS1: Clear CMOS jumper	
Status	Description
Open	Keep CMOS setup (normal operation)
Short	Clear CMOS setup

J2: 5VDSW jumper	
Pin	Description
Short 1 – 2	Carrier board has 5VDSW (default)
Short 2 – 3	Carrier board does not have 5VDSW

JSPI1: BIOS Flash SPI ROM connector			
Pin	Description	Pin	Description
1	+3.3V	4	SPI_CLK
2	SPI_CS#0	5	SPI_SI
3	SPI_SO	6	GND

EC_FLASH1: Flash EC ROM connector			
Pin	Description	Pin	Description
1	GND	3	CLOCK
2	DATE	4	POWER

CPU_FAN1: CPU fan connector			
Pin	Description	Pin	Description
1	PWM control	3	12V
2	Speed feedback	4	GND

Get more information:

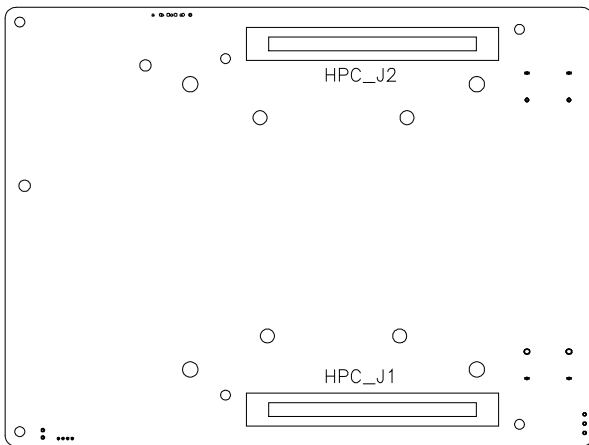
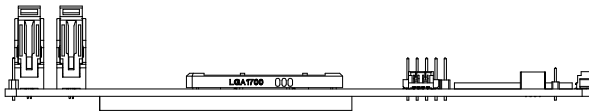
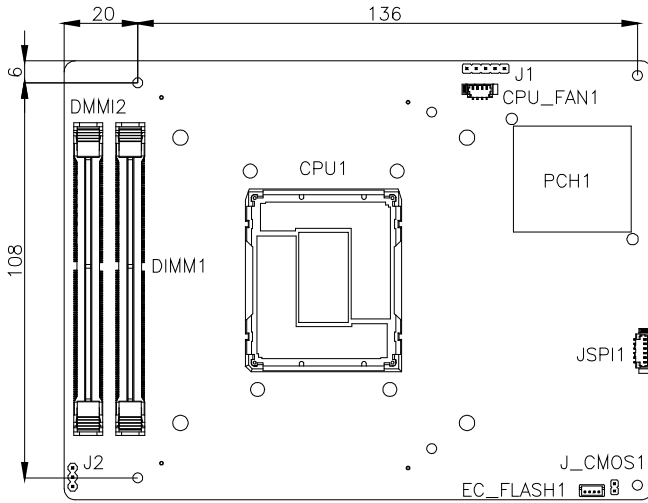


HUK-CR680



IEI Resource Download Center

Dimensions (Unit: mm)



Safety Instructions



Warning! Read the user manual before connecting the system to the power source.

Warning! To prevent the system from overheating, do not operate it in an area that exceeds the maximum operating temperature described in the user manual.

Warning! Ultimate disposal of this product should be handled according to all national laws and regulations.

Support



IEI Support URL

http://new.ieiworld.com/tw/online_support_form

Compliance



This equipment has been tested and found to comply with specifications for CE marking. If the user modifies and/or installs other devices in the equipment, the CE conformity declaration may no longer apply.



This equipment complies with Part 15 of the FCC Rules. Operation is subject to the following two conditions:

- This device may not cause harmful interference, and
- This device must accept any interference received, including interference that may cause undesired operation.

This equipment has been tested and found to comply with the limits for a Class A digital device, pursuant to part 15 of the FCC Rules. These limits are designed to provide reasonable protection against harmful interference when the equipment is operated in a commercial environment. This equipment generates, uses, and can radiate radio frequency energy and, if not installed and used in accordance with the instruction manual, may cause harmful interference to radio communications. Operation of this equipment in a residential area is likely to cause harmful interference in which case the user will be required to correct the interference at his own expense.



According to the requirement of the WEEE legislation the following user information is provided to customers for all branded IEI Electronics products subject to the WEEE directive.

This symbol on the product or on its packaging indicates that this product must not be disposed of with your other household waste. Instead, it is your responsibility to dispose of your waste equipment by handing it over to a designated collection point for the recycling of waste electrical and electronic equipment. The separate collection and recycling of your waste equipment at the time of disposal will help to conserve natural resources and ensure that it is recycled in a manner that protects human health and the environment. For more information about where you can drop o- your waste equipment for recycling, please contact your local city office, your household waste disposal service or the shop where you purchased the product.

Headquarters

IEI Integration Corp.

No. 29, ZhongXing Rd., Xizhi Dist.,
New Taipei City 221, Taiwan
TEL: +886-2-8691-6798/+886-2-2690-2098
FAX: +886-2-6616-0028
sales@ieiworld.com
www.ieiworld.com

America

IEI Technology USA Corp.

138 University Parkway, Pomona,
CA 91768, USA
Tel:+1-909-595-2819
Fax:+1-909-595-2816
sales@usa.ieiworld.com
usa.ieiworld.com

China

IEI Integration (Shanghai) Corp.

No. 515, Shen Fu Rd., Xin Zhuang Industrial Develop Zone,
Shanghai, 201108, China
Tel:+86-21-3116-7799
Fax:+86-21-3462-7797
sales@ieiworld.com.cn
www.ieiworld.com.cn