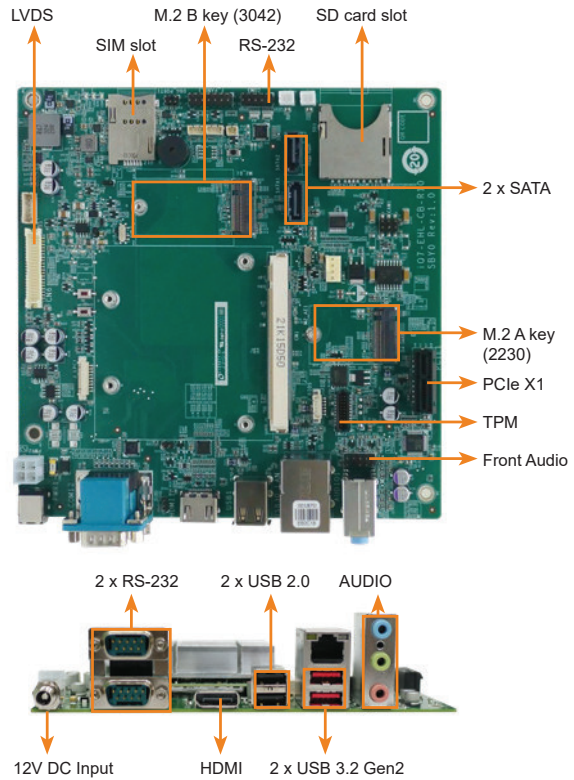
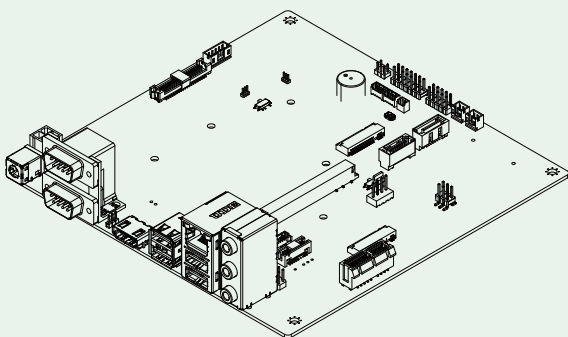
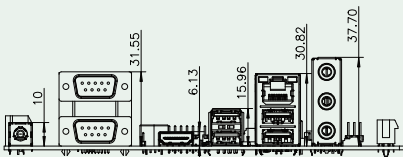
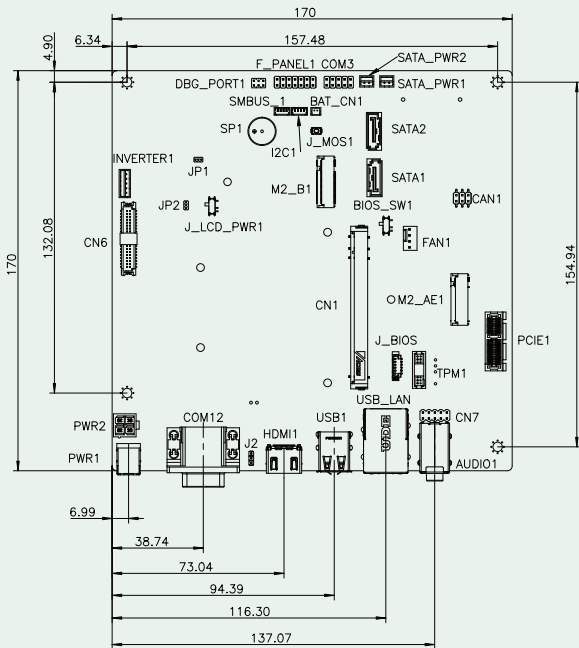


iQ7-EHL-CB

Dimensions



Specifications

Model	iQ7-EHL-CB
SIZE	Baseboard for QSeven Rev.2.1 module
Display Interfaces	1 X HDMI 1.4a 1 x18/24-bit Dual Channel LVDS
LAN	1 x RJ45 (2.5GbE)
External I/O Interface	2 x USB 3.2 Gen2 (10 Gb/s) 2 x USB 2.0 2 x RS-232
Internal I/O Interface	2 x SATA 1 x RS-232 pin header (2*5, P= 2.54) 1 x SD card socket 1 x SIM slot
Expansion	1 x PCIe x1 1 x M.2 A key 2230 for Wi-Fi & BT (PCIe Gen3 x1 / USB 2.0 signal) 1 x M.2 B key 3042 B key w/ SIM holder (PCIe Gen3 x2 / USB 2.0 signal)
Audio	Realtek ALC888S HD codec (Line-in, Line-out, Mic)
Front Panel	1 x Front_Panel (2*7 pin)(Power LED, HDD LED, Speaker(Buzzer), Power Button, Reset Button)
I2C	1 x 4-pin wafer
SMBus	1 x 4-pin wafer
Power Supply	12V DC Input
FAN connector	1 x System fan connector (1x4 pin)
Temperature	0°C ~ 60°C
Humidity	5% ~95 non-condensing
Dimensions	170mm x 170mm
Certification	CE/FCC compliant