

G156AD-SUIT

15.6" Intel® Core™ i5-1335U Rugged Ground Control Station Suitcase



KEY FEATURES

- Dust, and water-resistant design (IP65). MIL-grade drop, Shock and vibration
- Packed with 2 replacement batteries and boasting a long battery life, this is a must-have tool for serious UAV pilots.
- Packed in rugged and waterproof case for better protection and easy carrying solution

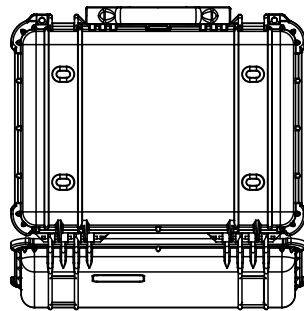
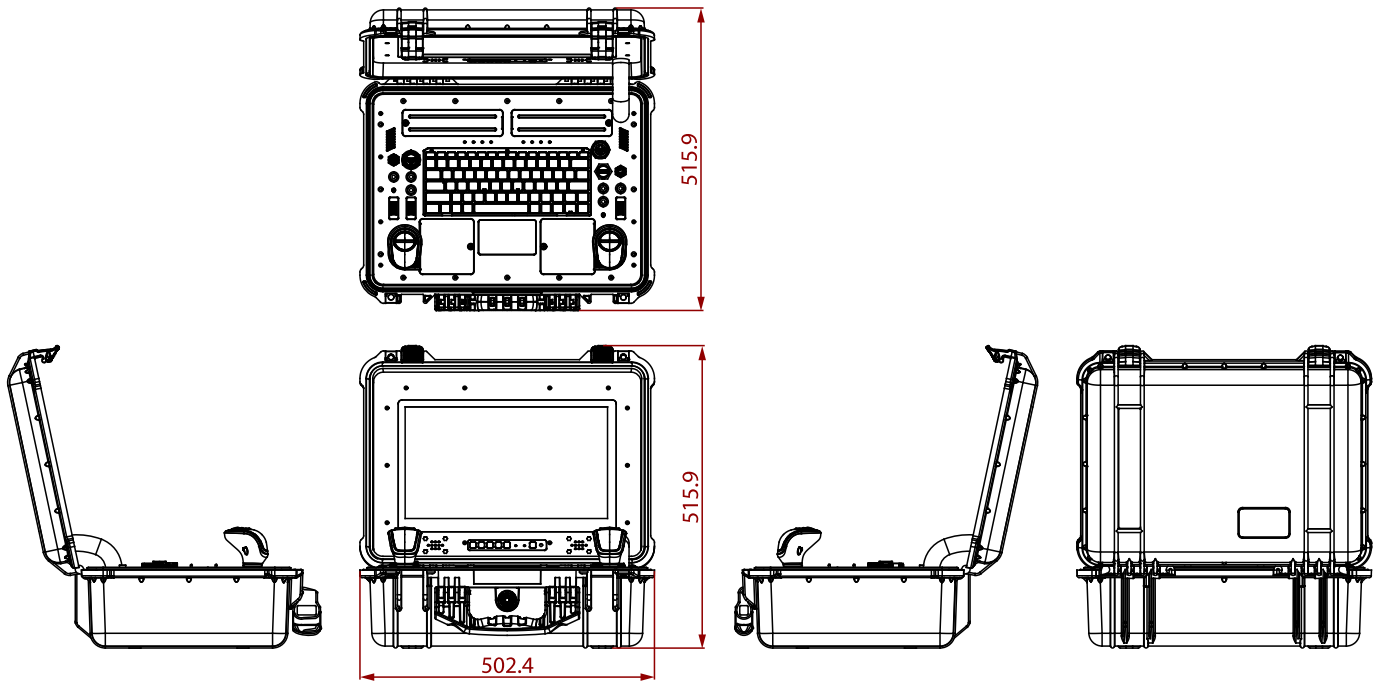


SPECIFICATIONS

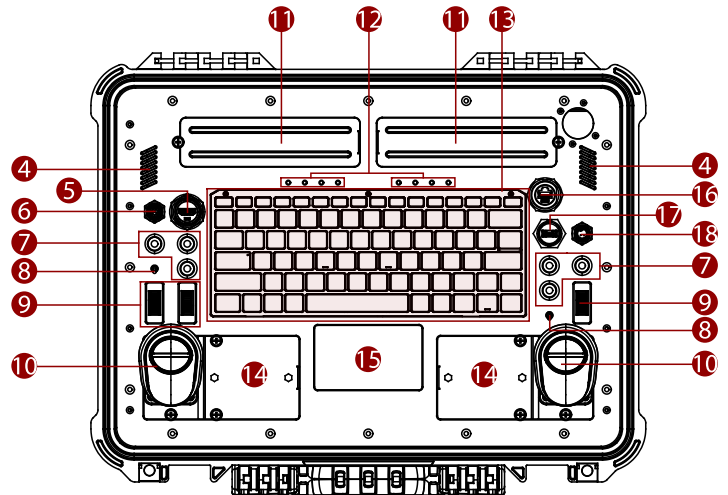
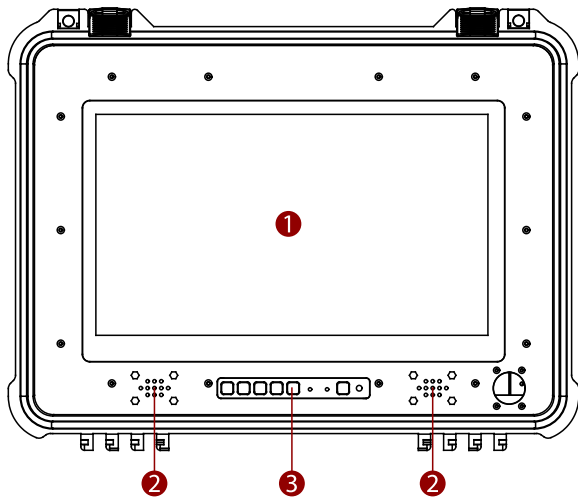
Display			
Bonding	Optical Bonding for Sunlight Viewability	Touch / Glass	Projected Capacitive Multi Touch Screen Protection Glass (Optional) Anti-glare Coating (Optional)
Resolution	1920x1080	Size	15.6 inches
Contrast Ratio	800:1	Panel Brightness	2000.0 nits
View Angles	89,89,89,89	Active Area	344.16x193.59 mm
System Specification			
Processor	Intel® Core™ i5-1335U 3.3GHz(up to 4.40 GHz)	Memory	1 x SO-DIMM, DDR5 4800 MHz, 8GB 16GB (Optional) 32GB (Optional)
Storage	1 x M.2 2280 M-Key NVMe SSD 128GB 256GB (Optional) 512GB (Optional) 1TB (Optional) 2TB (Optional) 1 x SATA III for 2.5" SSD/HDD up to 2TB (Optional)	Ethernet controller	2 x Intel® Ethernet Controller
Security	TPM 2.0	Operating System	Windows 11 IoT Enterprise (64 bit) (Optional) Windows 11 Pro 64 bit (Optional) Linux Ubuntu 22.04(Do not support Wake on Touch) (Optional)
Buzzer	nan		
Mechanical			
Dimension	502 x 401 x 188 mm	Weight	14.6kg
Cooling System	Fan Design		
IO Ports			
USB Port	1 x waterproof connector for USB 3.0 (typeA)	Serial Port	1 x M12 waterproof connector for RS232
Video	1 x waterproof connector for HDMI output	Audio	2x Speakers
LAN	1 x waterproof Giga LAN RJ45 connector		
Environment			
Operating Humidity	10% to 90% RH, non-condensing	Operating Temperature	-20°C to 60°C (AC mode), -10°C to 50°C (Battery mode)
Storage Temperature	-30°C to 70°C (-22°F to 158°F)	Shock	MIL-STD-810H Method 516.8 Procedure I
Vibration	MIL-STD-810H Method 514.8 Procedure I	IP rating	IP65

Length	nan
Certification	
Certification	CE, FCC
Control	
Button	2x joystick 3x roller switch 2x 2 band toggle switch 6x button 1x OSD control 1x keyboard and touch pad
Power	
Power Rating	19V DC
Accessory	
Accessory	19V Adapter and Power Cord

DIMENSIONS UNIT:MM



- | | |
|---------------------|-------------------------|
| ① Touch Panel | ⑩ Joysticks |
| ② Speakers | ⑪ Removable Batteries |
| ③ OSD Control Panel | ⑫ Battery Status |
| ④ Fan | ⑬ Keyboard |
| ⑤ HDMI | ⑭ Joystick Storage Area |
| ⑥ COM | ⑮ Touch Pad |
| ⑦ Buttons | ⑯ LAN |
| ⑧ Toggle Switches | ⑰ USB |
| ⑨ Roller Switches | ⑱ Power Input |



NOTE

- 1.This is a simplified drawing and some components are not marked in detail.
- 2.Please contact our sales representative if you need further product information.
- 3.All specifications are subject to change without prior notice.
- 4.The product shown in this datasheet is a standard model.For diagrams that contain customized or optional I / O, please contact the Winmate Sales Team for more information.