

Datasheet

2.5" SATA SSD

3TE7 series

- 2.5" SATA III solution for industrial field
- High IOPS
- iSMART disk health monitoring
- iPower Guard for protecting unstable start up and shut down.
- iData Guard for abnormal power failure



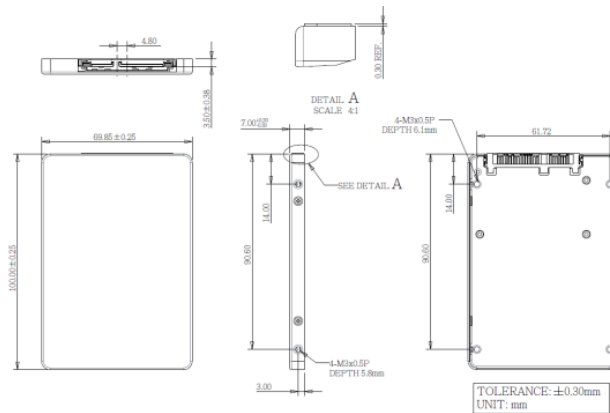
Introduction

Innodisk 2.5" SATA SSD 3TE7 is SATA III 6.0 Gb/s flash based disk, which adopts latest SATA III NAND controller with Innodisk's exclusive L³ FW architecture. The upgraded L³ FW architecture, combining Innodisk signature 4K mapping algorithm L² FW architecture with powerful LDPC technology, makes 3TE7 series have outstanding high IOPS, better data integrity and extended lifespan through reducing the bad block number happening. Built-in thermal sensor, and iData Guard ensure data integrity and reliability of 2.5" SATA SSD 3TE7 for industrial applications.

2.5" SATA SSD

3TE7 series

Diagram



Specifications

Headquarters (Taiwan)

5F., No.237, Sec. 1, Datong Rd.,
Xizhi Dist., New Taipei City,
Taiwan (R.O.C.)
Tel: +886-2-77033000
Email: sales@innodisk.com

Branch Offices:

USA
usasales@innodisk.com
+1-510-770-9421
Europe
eusales@innodisk.com
+31-40-3045-400
Japan
jpsales@innodisk.com
+81-3-6667-0161
China
sales_cn@innodisk.com
+86-755-21673689
www.innodisk.com

© 2024 Innodisk Corporation.
All right reserved. Specifications
are subject to change without
prior notice.

Interface	SATA III
Flash Type	3D TLC
Capacity	64GB~2TB
Max. Channels	4
Sequential R/W (MB/sec, max.)*	550 / 500 MB/s
4KB Random (QD32) R/W (IOPS)*	86,000/73,000
Max. Power Consumption	3.9 W
Thermal Sensor	✓
External DRAM Buffer	-
H/W Write Protect	Optional
ATA Security	✓
S.M.A.R.T.	✓
Dimension (WxLxH)	69.8 X 100.0 X 6.8 mm
Environment	Vibration: 20G @7~2000Hz Shock: 1500G @ 0.5ms Storage Temperature: -40°C ~ +85°C MTBF: 3 million hours
* Sequential performance based on CrystalDiskMark 5.1.2 with file size 1000MB	

20240821

Ordering Information (Please refer to TPS for detail)

Operation Temp.	64GB	128GB	256GB	512GB	1TB	2TB
Standard Grade (0°C ~ +70°C)	DES25-64GDK1KCCSL	DES25-A28DK1KCCDL	DES25-B56DK1KCC&L	DES25-C12DK1KCCQL	DES25-01TDK1KCCQL	DES25-02TDK1KCCQL

&. D: 2 channels; Q: 4 channels

innodisk

www.innodisk.com