

## Features

- Intel Atom® x6000E Series/Pentium®/Celeron® SoC processor Qseven Spec. Rev. 2.1 Compliant
- Onboard Single Channel LPDDR4 4GB Memory Down (8GB for BOM Option) with 3200MT/s
- 1 x Intel® I226LM/IT
- Intel® HD Audio Integrated on CPU
- Onboard eMMC 5.1 64/128GB (Optional)
- Onboard TPM 2.0
- Qseven Size: 2.75" x 2.75" (70mm x 70mm)
- DC in +5V



LPDDR4



USB 3.2 Gen1



2 Display



SD/SDIO

## Specifications

### System Information

Processor	Intel® Atom™ x6000E Series/Pentium®/Celeron® SoC Processor
System Memory	Onboard Single Channel LPDDR4 4GB Memory Down (8GB for BOM Option) with 3200MT/s
I/O Chipset	EC iTE IT5571
Watchdog Timer	H/W Reset, 1Sec. ~ 65535Sec. and 1Sec./Step
BIOS	AMI uEFI BIOS, 256 Mbit SPI Flash ROM
H/W Status Monitor	Monitoring System Temperature, Voltage with Auto Throttling Control
TPM	Onboard TPM 2.0

### Expansion

Expansion	4 x PCIe x1 (Gen 3)
-----------	---------------------

### Storage

Storage	Onboard eMMC 5.1 64GB / 128 GB (Optional)
---------	---

### Display

Graphic Chipset	Intel® SoC Processor Integrated Gen11 LP Graphics
Spec. & Resolution	DP 1.4 Max Resolution 4096x2160 @60Hz or HDMI 2.0b Max Resolution 4096x2160 @60Hz eDP 1.3 Max Resolution 4096x2160 @60Hz Only or LVDS Max Resolution 1920 x 1080 @60Hz Dual Channel 18/24-bits LVDS (Chrontel CH7511A-BF eDP to LVDS) *By BOM Option Via HW/BIOS, Refer to Block Diagram for Detail.
Multiple Display	Up to 2 Independent Display HDMI DP eDP LVDS
LVDS	CH7511B(eDP to LVDS)

### Audio

Audio Interface	Intel® HD Audio Integrated on CPU
-----------------	-----------------------------------

### Ethernet

LAN Chipset	1 x Intel® I226LM/IT
Ethernet Interface	10/100/1000/2500 Base-Tx GbE Compatible

### Software Support

OS	Windows 10, Windows 11 IoT Enterprise (64-bit) Linux
----	---

### Certification

Certification Information	CE, FCC Class, RoHS Compliant
---------------------------	-------------------------------

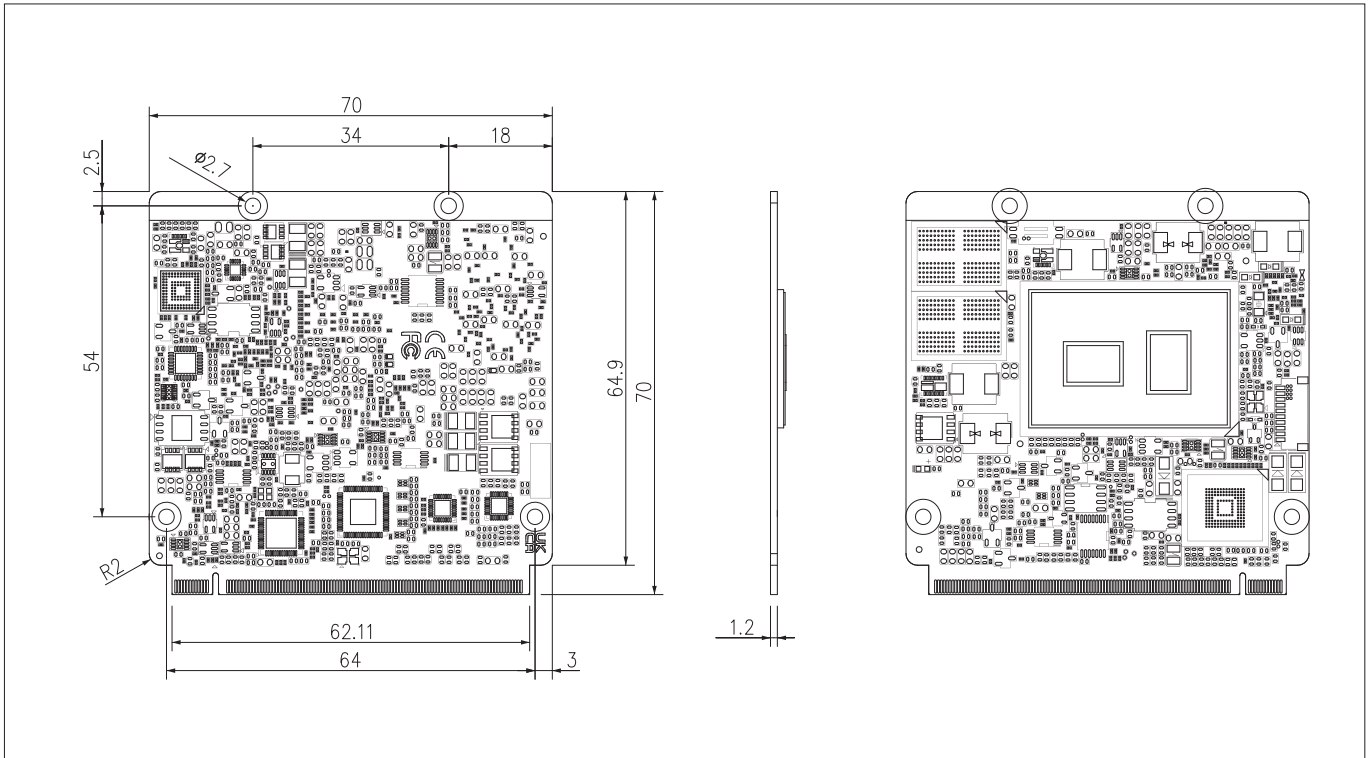
### I/O

USB	1 x USB 3.2 Gen1 8 x USB2.0
COM Port	1 x UART
PCIe	4 x PCIe x1 (Gen 3)
SATA	2 x SATA III
MIO	1 x SMBus 1 x LPC 1 x I2C 1 x SDIO 1 x SD 1 x SPI

### Mechanical & Environmental

Operating Temp.	Standard 0°C ~ 60°C (32°F ~ 140°F) Extended -40°C ~ 85°C (-40°F ~ 185°F)
Storage Temp.	-40°C ~ 85°C (-40°F ~ 185°F)
Operating Humidity	40°C @ 95% Relative Humidity, Non-condensing
Weight	0.095lbs (0.043Kg)
Power Requirement	+5V
Power Mode	ATX
Dimension (L x W)	2.75" x 2.75" (70mm x 70mm)

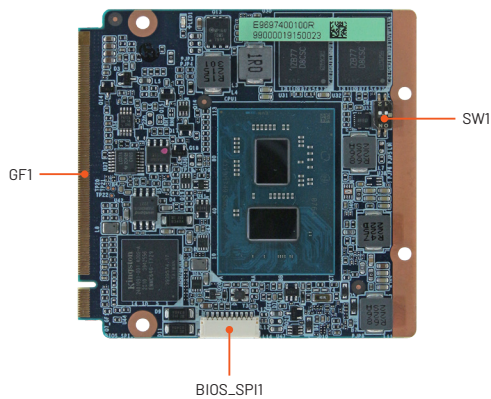
## Mechanical Drawing



## Ordering Information

P/N	CPU	PCH	LVDS/eDP	TPM	Memory	Storage	Operating Temp.	Thermal Solution
EQM-EHL-N11-A1-1R	Intel® Celeron® SoC Processor N6211	NA	LVDS	Onboard TPM 2.0	Onboard Single Channel LPDDR4	eMMC 5.1 64/128GB (Optional)	0°C ~ 60°C (32°F ~ 140°F)	ACC-EQMEHL-SK-1R W/O FAN H=20mm
EQM-EHL-N15-A1-1R	Intel® Pentium® SoC Processor N6415	NA	LVDS	Onboard TPM 2.0	Onboard Single Channel LPDDR4	eMMC 5.1 64/128GB (Optional)	0°C ~ 60°C (32°F ~ 140°F)	ACC-EQMEHL-SK-1R W/O FAN H=20mm
EQM-EHL-X11E-A1-1R	Intel® Atom® SoC Processor X6211E	NA	LVDS	Onboard TPM 2.0	Onboard Single Channel LPDDR4	eMMC 5.1 64/128GB (Optional)	-40°C ~ 85°C (-40°F ~ 185°F)	ACC-EQMEHL-CL-1R W/ FAN H=42mm
EQM-EHL-X13E-A1-1R	Intel® Atom® SoC Processor x6413E	NA	LVDS	Onboard TPM 2.0	Onboard Single Channel LPDDR4	eMMC 5.1 64/128GB (Optional)	-40°C ~ 85°C (-40°F ~ 185°F)	ACC-EQMEHL-CL-1R W/ FAN H=42mm

## I/O Overview



## Block Diagram

