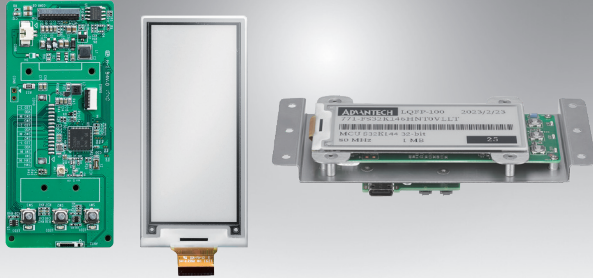


EPD-023B 1AG-NTC01

2.9" ePaper display module with UART

NEW



Module

Open-Frame

Features

- 2.9" Black and White ePaper Panel Display
- An Open Frame Design with Flexible Embedded ePaper Display Module
- Fast Data Transmission and Panel Refresh
- Bi-stable and wide view angle
- Supported Temperature Range: 0 ~ 50 °C
- RS-485 data transmission
- Ready driver and easy startup agent

Introduction

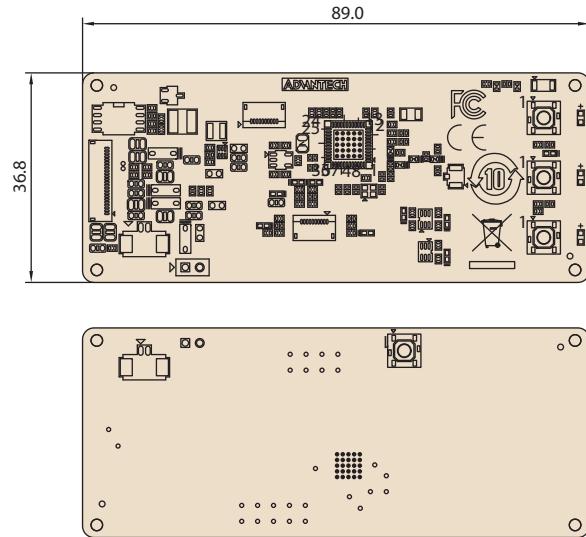
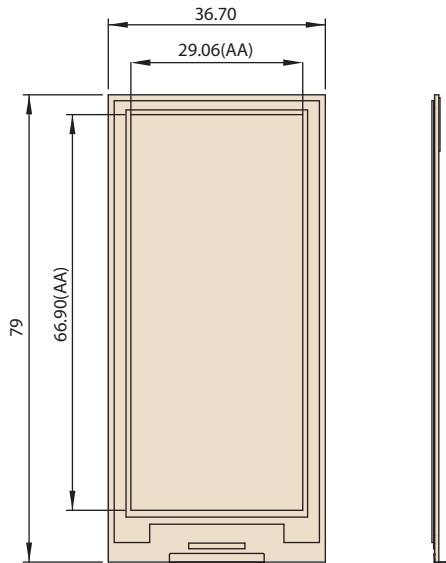
The EPD-023B leverages an open-frame design that enable customers to add their own ID design easily. With 2.9" display panel, the EPD-023B is outstanding to integrate into any system and refresh in short time.

Specifications

| | | |
|--------------------------|--------------------------|---|
| Display | Screen Size | 2.9" (79 x 36.7 mm) |
| | Resolution | 296 x 128 pixels |
| | Color | Black & White |
| Storage | Internal | Flash: 128 KB |
| | External | SPI Flash: 256 KB |
| I/O Interface | RS-485 (USB-C connector) | 1 |
| | USB | 1 |
| | Reset Button | 0 |
| | GPIO | 6 |
| Power | | Power Input: USB-C (5V/0.2A) One to Multiple ePaper: USB-C |
| Physical Characteristics | Outline Dimension | 117 x 52.7 x 16.9 mm |
| Environment | Operating Temperature | 0 ~ 50 °C |
| | Storage Temperature | -25 ~ 60 °C |
| | Operating Humidity | 5 ~ 80% Relative Humidity, non-condensing |
| Certifications | | FCC/NCC/CE/Tele |

Dimensions

Unit: mm



Ordering Information

| Model Name | Description |
|-------------------|--|
| EPD-023B1AG-NTC01 | 2.9" Wireless ePaper open frame display module |

Ordering Information

| Model Name | Description |
|---------------|--|
| 1700035232-01 | M cable USB-C 24P(M)/D-SUB 9P(F) 20cm |
| 1700032990-01 | M cable USB-C 24P(M)/USB-C 24P(M) 25cm |
| 1700033249-01 | M cable USB-C 24P(M)/USB-A 4P(M) 180cm |
| 9696550DA01 | IO board |

* All E Ink Panel inspection criteria refer to E Ink CAS & Inspection standard document.

* Note: E Ink Recommend condition for storage:

Temperature: 20 ±10 degree C

Humidity : 60% RH±10%RH, Non-condensing

* Note: If panel module have been put in low temperature between 0--25 degree C for a while, we recommend to leave it between 20 to 30 degree C for 4 days before assembly.

* Note: WISE-3240 industrial grade supports wider range of operation temperature and storage temperature. Please request WISE-3240 specification for the reference