

## VEGA-X110

### MXM 3.1 Intel® Arc™ A-Series A370M Embedded GPU Card

#### Packing List

Before you start installing your card, please make sure that the following items have been shipped:

- 1 x VEGA-X110 GPU card
- 1 x Startup Manual
- 1 x China RoHS

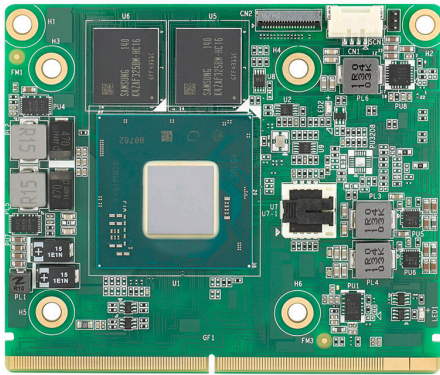
Optional: Thermal Kit

- 1 x Fansink or 1 x Heat spreader attachment  
(Based on the customer's order requirement)

**Note:** Regarding OpenVINO, you can go to:  
<https://www.intel.com/content/www/us/en/developer/tools/openvino-toolkit/overview.html>  
to download the latest version.

If any of these items are missing or damaged, please contact your distributor or sales representative immediately.

#### Product Picture



For more information on this and other Advantech products, please visit our website at:

<http://www.advantech.com>

For technical support and service, please visit our support website at:

<http://support.advantech.com>

This manual is for VEGA-X110.

Part No. 2046X11000  
Printed in Taiwan

Edition 1  
July 2023

#### Specifications

Product	VEGA-X110-00A1	
Form Factor	Mobile PCI Express Module (MXM 3.1 Type-A)	
GPU	Intel® Arc™ A370M	
Memory	GDDR6 4GB	
Dimensions (W x D)	82 x 70 mm	
Signal Interface	MXM 3.1 PCI Express Gen 4 x8 with 3.0 Backwards Compatibility	
Temperature	0~60 °C (Depends on the GPU and cooler)	
Max. Power Consumption	Up to 40 watts	
Thermal Solution	Fansink (optional)	Heat spreader (optional)
Power Range	9-20V (Fan control: 12V only)	
Display I/O Ports	Reserved 4 x DisplayPort 1.4a, 7680 x 4320 @60Hz, 8K	
Graphics Engine	DirectX 12, OpenGL 4.6, OpenCL 3.0 HW Encoding: H.264/H.265(HEVC)/AV1 HW Decoding: H.264/H.265(HEVC)/ AV1/VP9	

#### Motherboard Requirements

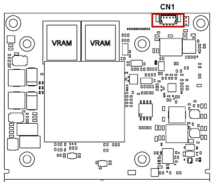
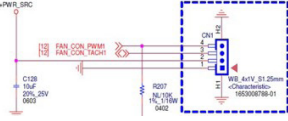
- Above 4G decoding enabled
- Resizable (Re-Size) BAR support enabled
- Compatibility Support Module (CSM) or Legacy Mode must be disabled and UEFI boot mode must be Enabled.

**Notes:** The procedure to enable resizable BAR may be different for each system manufacturer. Please check with your system manufacturer for specific instructions as necessary.

The Resizable BAR option may be described as Re-Size BAR, Smart Access Memory, or Clever Access Memory.

Visit the Intel website to get more information:  
<https://www.intel.com/content/www/us/en/support/articles/000091128/graphics.html>

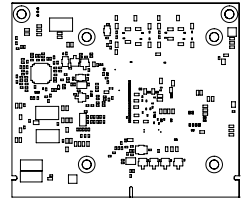
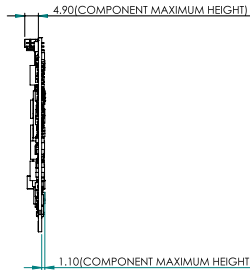
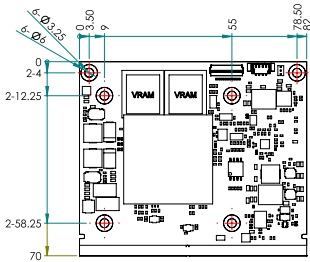
# Connectors

Connector Location	Connector	Description	Pin Definitions	Symbol
	CN1	4-Pin Fan Connector	PIN1: GND PIN2: +12V PIN3: FAN TACH PIN4: FAN PWM	

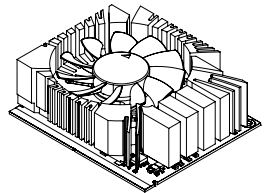
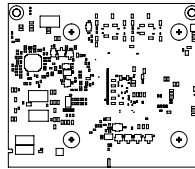
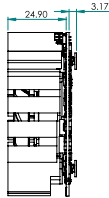
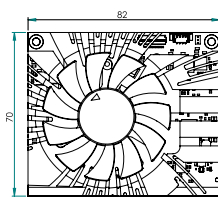
Notes: Insert the fan plug into the fan connector on the VEGA-X110 GPU card.

# Dimensions

## VEGA-X110



## VEGA-X110 with Fansink (optional)



## VEGA-X110 with Heat Spreader (optional)

