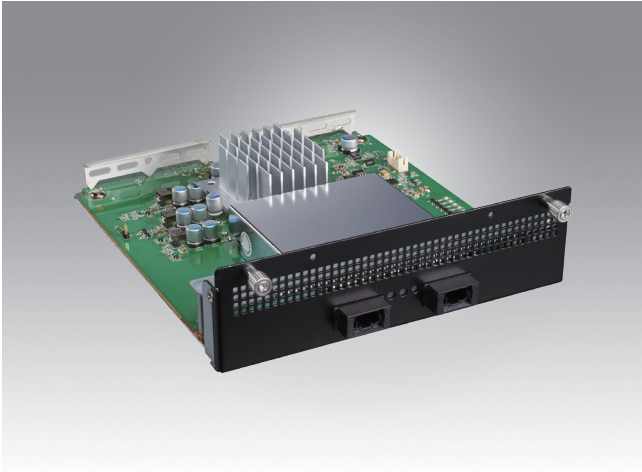


NMC-6004FBD

2 Port 100GBase-SR4 Bypass Network Mezzanine Card



Features

- 1 x NVIDIA ConnectX-6
- 2 ports 100GBase-SR4
- PCIe x16, Gen 4
- CE/ FCC, RoHS compliant



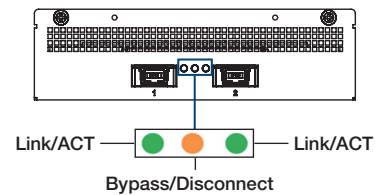
Specifications

Controller	NVIDIA ConnectX-6
Interface	PCIe x16, Gen4
Speed	100GbE
I/O Port	2 x MPO-MT
Reach Distance	70 /100m (OM3/OM4)
Multi Mode Fiber	Available in 50/125µm
Optical Receiver Sensitivity	-4.2 dBm
LAN LED definition	Link/Act/Bypass LED: Link: Green on Activity: Green Blinking LAN Bypass: Amber on Disconnect: Amber blinking
Advanced Software Features	Support: IEEE 802.1Q, 802.1P VLAN tags and priority IEEE 802.1Qaz (ETS) IEEE 802.1Qbb (PFC) IEEE 1588v2
OS support	Linux (CentOS, Red Hat, Ubuntu), Windows server
Operating Temperature (Air flow 0.7 m/sec)	0°C ~ 40°C (23°F~113°F) with system
Storage Temperature	-20°C ~ 65°C (-4°F~149°F)
Storage Humidity	5 ~ 85 % @ 60 °C (140 °F)
Dimension (W x H x D)	149.6 x 42.4 x 174.7 mm
Weight	0.5 kg
Certification	CE/FCC, RoHS

Ordering Information

Part Number	Description
NMC-6004FBD-02A1	2-ports 100GBase-SR4 Fiber Bypass Module

Front Panel Diagram



Dimensions

Unit: mm

