

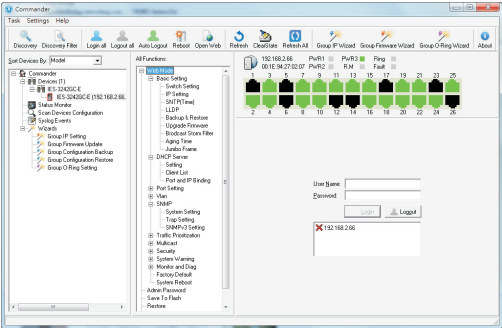
Quick Installation Guide

Industrial Managed Gigabit PoE Switch

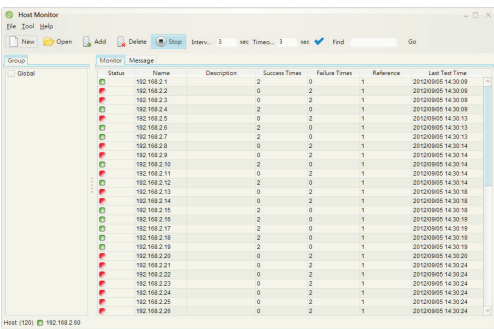
Open-Vision

ORing's switches are intelligent switches. Different from other traditional redundant switches, ORing provides a set of Windows utility (Open-Vision) for user to manage and monitor all of industrial Ethernet switches on the industrial network

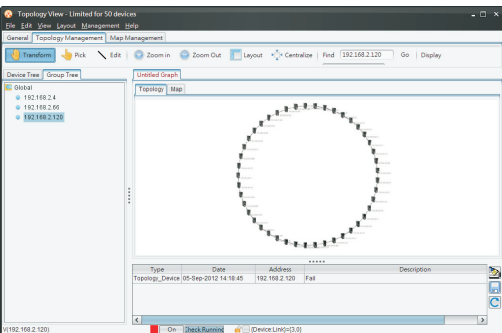
Commander



Host Monitor



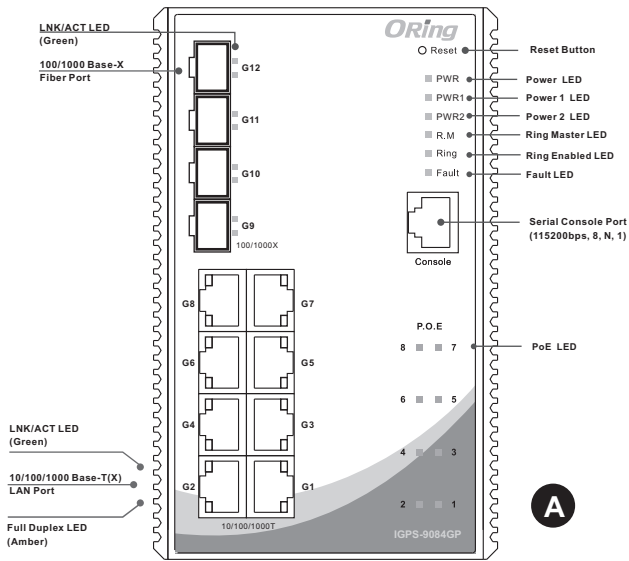
Topology View



Packing list

Model name	Front Panel	Model Description	Accessory
IGPS-9084GP	A	Industrial 12-port managed Gigabit PoE Ethernet switch with 8x10/100/1000Base-T(X) P.S.E. ports and 4x100/1000Base-X, SFP socket	① X 1, ② X 8, ③ X 4, ④ X 6, ⑤ X 1, ⑥ X 1, ⑦ X 2, ⑧ X 1, ⑨ X 1

Front Panel

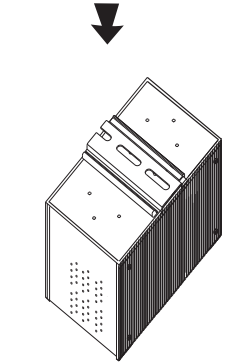
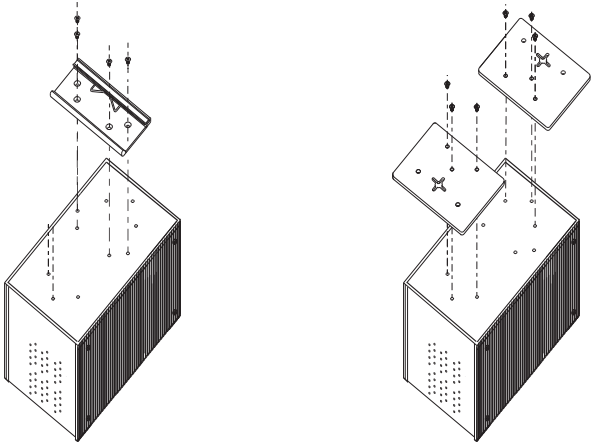


Accessory

- ① 6-Pin Terminal block
- ② Dust Cover (RJ-45)
- ③ Dust Cover (SFP)
- ④ Flat Screw (M3 X5)
- ⑤ CD
- ⑥ QIG
- ⑦ Wall-mounted kit
- ⑧ Console Cable
- ⑨ 88mm DIN-Rail kit

Installation

- DIN-Rail Install Step
- Wall-mounted Install Step



Power Connection Guide

