



User Manual



Please go to SUNIX or Realtek official website to download latest driver.
SUNIX (www.sunix.com), keyword: LAN1425
Realtek (www.realtek.com), keyword: RTL8125

Regulatory Compliance

FCC Class B Declaration

This equipment has been tested and found to comply with the limits for a Class B digital device, pursuant to part 15 of the FCC rules. These limits are designed to provide reasonable protection against harmful interference when the equipment is operated in a commercial environment. This equipment generates, uses and can radiate radio frequency energy and, if not installed and used in accordance with the instruction manual, may cause harmful interference to radio communications.

Operation of this equipment in a residential area is likely to cause harmful interference in which case the user will be required to correct the interference at his own expense. Modifications not authorized by the manufacturer may void users authority to operate this device.

CE

This equipment meets the requirements of EC Electromagnetic Compatibility Directive (2004/108/EC and 2014/30/EC)

WEEE Information

For EU (European Union) member users: According to the WEEE (Waste electrical and electronic equipment) Directive, do not dispose of this product as household waste or commercial waste. Waste electrical and electronic equipment should be appropriately collected and recycled as required by practices established for your country. For information on recycling of this product, please contact your local authorities, your household waste disposal service or the shop where you purchased the product.

Contact Information

Customer satisfaction is our number one concern, and to ensure that customers receive the full benefit of our products, SUNIX services has been set up to provide technical support, driver updates, product information, and user's manual updates.

Copyright - Copyright© 2019 SUNIX Co., Ltd. All Rights Reserved. No part of this publication may be reproduced, transcribed, stored in a retrieval system, translated into any language, or transmitted in any form or by any means, photocopying, manual, or otherwise, without prior written permission from SUNIX Co., Ltd. Disclaimer - SUNIX Co., Ltd. Shall not be liable for any incidental or consequential damages resulting from the performance or use of this equipment. SUNIX Co., Ltd. makes no representations or warranties regarding the contents of this manual. Information in this manual has been carefully checked for reliability; however, no guarantee is given as to the correctness of this content. In the interest of continued product improvement, this company reserves the right to revise the manual or include change in the specifications of the product described within it at any time without notice and without obligation to notify any person of such revision or changes. The information contained in this manual is provided for general use by the customers. Trademarks - SUNIX is a registered trademark of SUNIX Co., Ltd. Other registered marks used herein are for identification purposes only and may be trademarks of their respective owners. BSMI聲明 - 限用物質含有情況標示資訊網站請參考下列網址: https://www.sunix.com.tw 操作說明: 選擇頁面之產品/型號/文件下載區(RoHS文件)。

PCI Express 2.5G BASE-T Network Card

Introduction

SUNIX LAN1425 PCI Express Network card adds a 2.5G R-J45 Ethernet port to provide cost-effective network connectivity for high bandwidth PC desktops, workstations and servers. It's designed to support 10/100/1000/2500 Mbps network speed Auto-Negotiation, 802.3x flow control and Wake-on-LAN technology. The card increases 250% data rate than Gigabit Ethernet without having to overhaul your existing infrastructure cable wiring. SUNIX LAN1425 lowers the cost and effort for customers to upgrade their Gigabit to 2.5G Ethernet ecosystem. Users can get the benefits of network speed improving productivity, including video streaming, and esports gaming.

Applications

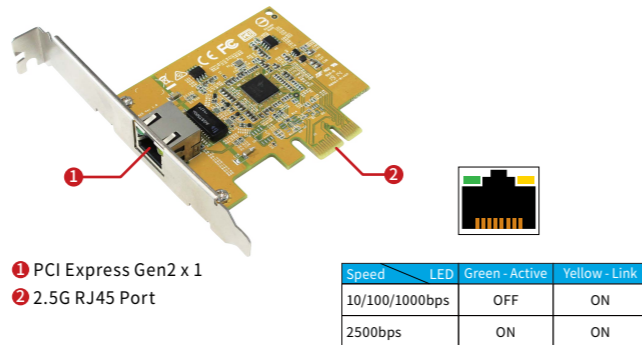
- Upgrade your PC server or workstation to provide enhanced performance.
- Upgrade a 10/100/1000 Ethernet port on your computer to 2.5 GbE networking.
- Add networking capabilities to an old system with no Ethernet port.

Package Checklist

Please check if the following items are present and in good condition upon opening your package. Contact your vendor if any item is damaged or missing.

1. LAN1425 - PCI Express 2.5G BASE-T Network Card
2. Driver CD
3. User's Manual (this document)

Hardware Guide

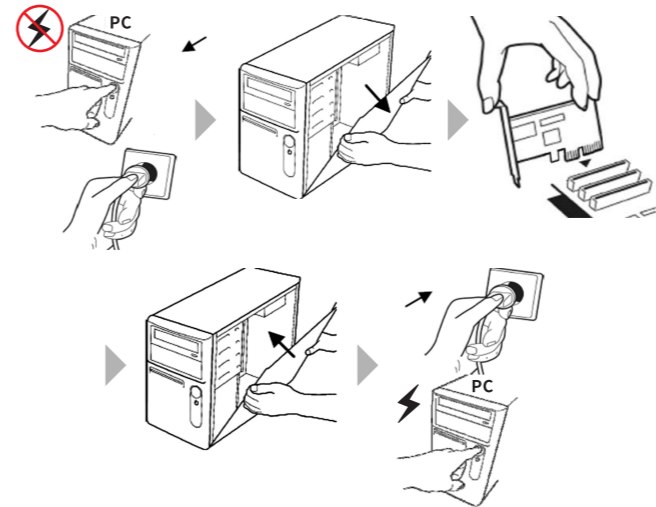
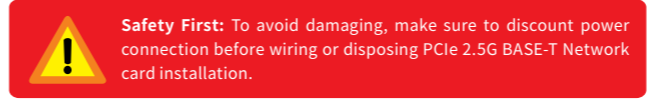


- 1 PCI Express Gen2 x 1
- 2 2.5G RJ45 Port

Hardware Installation

Follow the instruction given below to install the PCI Express Card:

1. Turn your computer off and remove the power plug from the plug socket.
2. Remove the cover from the computer case.
3. Remove the metal cover plate on the rear of a free PCI Express slot (e.g. PCIe16).
4. Insert the card into one free PCI Express slot and screw it firmly on the bracket side.
5. Place the cover back onto the computer.
6. Insert the plug into the plug socket.



Features

- PCI Express Base Specification Revision 2.0 single-lane (x1).
- Supports network data transfer rate of 2.5G/1G/100/10 Mbps.
- RJ-45 Port offer high speed 2.5Gbps transmission over CAT 5e or 6 cable
- Supports jumbo frame sizes up to 9K bytes
- Plug-n-Play, I/O address and IRQ assigned by BIOS.
- Compliant Full High and Low Profile PCIe bracket (Optional Accessory).
- Driver supports for Microsoft Windows and Linux operation systems.
- Certified by Electromagnetic Compatibility (CE, FCC, VCCI, BSMI) & RoHS approval.

Specification

| | |
|----------------------|---|
| Model | LAN1425 |
| Description | PCI Express 2.5G Network Card |
| Chipset | Realtek RTL8125AG |
| Interface | PCI Express Gen2 x1 |
| Port | RJ45 (2.5GbE) x 1 |
| Standard | IEEE 802.3, IEEE 802.3u, IEEE 802.3x, IEEE 802.3ab/az/bz IEEE 802.1Q VLAN Tagging, IEEE 802.1ad Double VLAN |
| Network Media | 10BASE-T: UTP category 3, 4, 5 cable (maximum 100m) 100BASE-TX: UTP category 5, 5e cable (maximum 100m) 1000Base-T: UTP category 5e, 6 cable (maximum 100m) |
| Data Rates | 10/100/1000/2500Mbps |
| LED Indicator | 2500Mbps Link/Act, 1000Mbps Link/Act, 100Mbps Link/Act |
| O.S Support | Windows XP / Vista / 7 / 8.x / 10 (X86/X64) Windows Server 2008 / 2008R2 / 2012 (X64) Linux kernel 2.6.x ~ 4.15 |
| Environment | Operation temp. 0 °C ~ 60 °C (32-104°F) Operation humidity: < 85% non-condensing Storage temp. -10 °C ~ 85 °C (14-176°F) |
| PCB Dimension | 71.5*56*1.6mm |
| Bracket | Standard 120 mm (Low Profile 80mm) |
| Regulatory Approvals | CE, FCC, VCCI, BSMI, RoHS |

Driver Installation

Please go to SUNIX or Realtek official website to download latest driver.
 SUNIX (www.sunix.com), keyword: LAN1425
 Realtek (www.realtek.com), keyword: RTL8125

SUNIX LAN1425 PCI Express 2.5G Network card supports Windows and Linux operation system. Users can install the driver via the attached CD or download the latest driver from official SUNIX website.

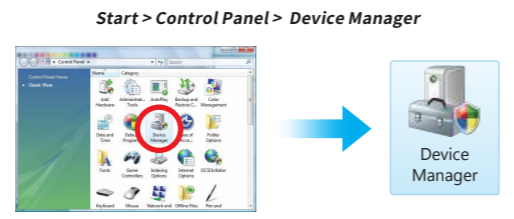
- (1) Please click **Setup.exe** to install windows driver.
- (2) Click **"Next"** to continue driver installation process until **"Finish"**.



Hardware Verify

To mark sure network card installed ready, user can verify in the device manager.

- (1). Click on the **"Device Manager"** tab in the Windows Control Panel



- (2). Please entry **"Network adapters"** catalog, and **"Realtek Gaming 2.5GbE Family Controller"** shows in the device manager.

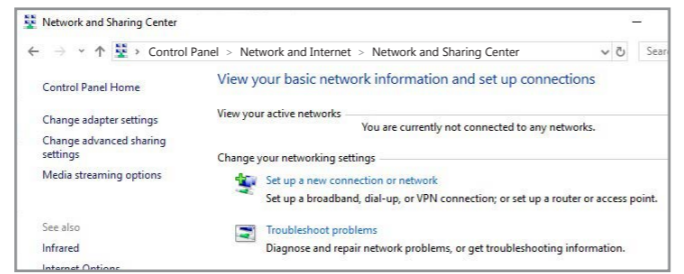
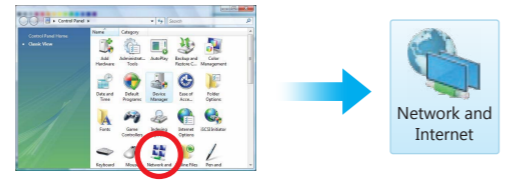


Network Setting

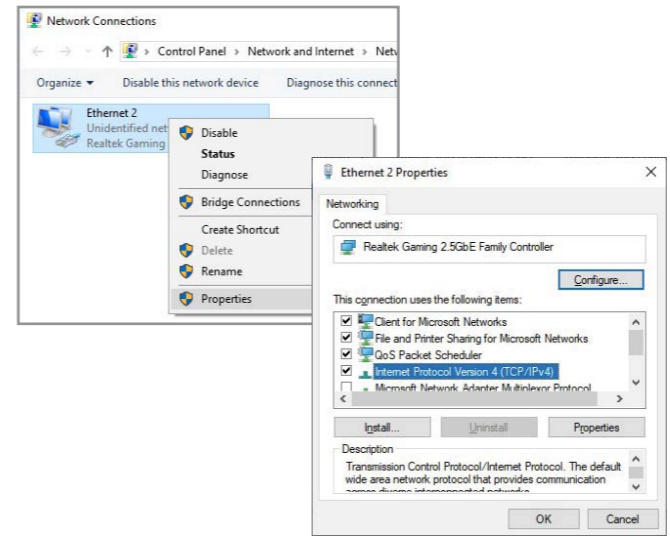
User can set 2.5G networking setting from the following instructions.

- (1). Click on the **"Network and Internet"** tab in the Windows Control Panel

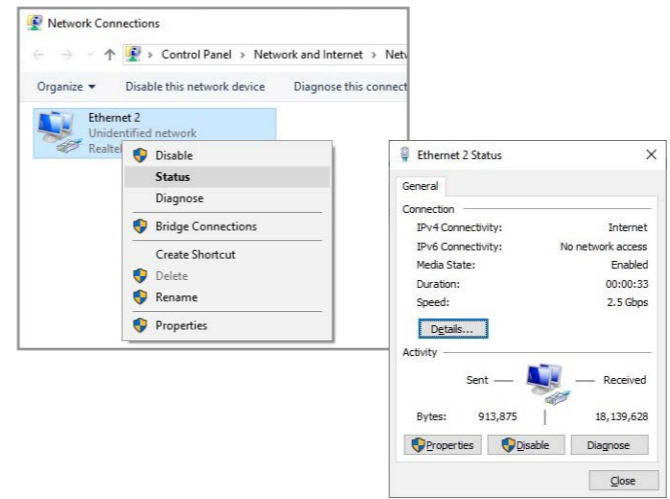
Start > Control Panel > Network and Internet > Network and Sharing Center



- (2). Right click the **"Ethernet"** adapter and select **"Properties"** to set network settings.



- (3). Right click the **"Ethernet"** adapter used by the network card, and select **"Status"** from the menu to affirm network settings.

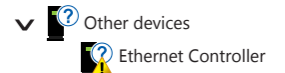


Troubleshooting

Q 1. My computer can NOT detect Network Ethernet card.

- Ans:a. Make sure the network card is correctly plugged into PCI Express slot.
 If not, turn off your computer and try another PCI Express slot.
 b. If the network card is plugged correctly, please check card's golden connectors (finger) is clean; if not, clean golden connectors (finger) surface by eraser.
 c. Please upgrade your motherboard BIOS to the latest version.
 d. If above operations are useless, please try another PC desktop to check board itself is workable or not.

Q 2. How to deal with yellow exclamation mark on Ethernet Controller?



Ans: If there's an Ethernet Controller shows yellow exclamation mark in the device manager, please try to re-install driver again by following driver installation guide. If problem still happens, please try install network card into another PCI Express slot.

Q 3. I cannot get 2.5G Ethernet transfer performance.

Ans: Please make sure your networking environment supporting 2.5G hardware infrastructure, including Ethernet Switch and category 5e or higher level cable.

Q 4. How to configure 10/100/1000/2500 Ethernet settings?

Ans: PCIe Networking card is able to automatically sense and operate on either speed without manual reconfiguration. Just connect the correct Ethernet cable between PCIe card and Networking Switch or router, and then user would get the best performance.



Copyright© by SUNIX Co., Ltd. All brand names and trademarks are the registered property of their respective owners.
 E-mail for technical support: info@sunix.com
 Website for product information: www.sunix.com
 Tel: +86-2-8913-1987
 Fax: +86-2-8913-1986

771-LAN142500-S01
 Made in China

