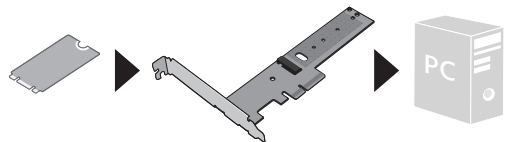




Quick Installation Guide



Please visit <https://www.sunix.com> for latest manual update.

PCIe x4 to NVMe M.2 Key-M Card support PCIe #CLK_REQ

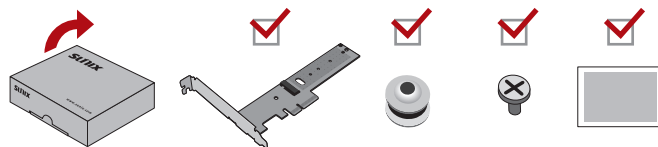
Introduction

SUNIX P2M04M01 PCI Express x4 card expands a M.2 module (Key-M) into desktop or server PC, allowing user accesses new generation NVM Express interface (Non-Volatile Memory Host Controller Interface Specification) to capitalize on the low latency and internal parallelism of solid-state storage devices. It supports M.2 NVMe SSD storage module in 2280, 2260, 2242, or 2230 format with driver free feature. To maximum the highest performance of M.2 NVMe SSD, this card ensures the PCBA layout routing length less than 1.5inch between PCI Express and M.2 slot. It is the best M.2 NVMe SSD adapter card solution for desktop, server, gaming, or industrial applications.

Package

Please check if the following items are present and in good condition upon opening your package. Contact your vendor if any item is damaged or missing.

1. Hardware:
 - 1). P2M04M01 - PCIe x4 to NVMe M.2 Key-M Card x1pcs
 - 2). Standoff Holder x1pcs
 - 3). Fixing Screw x1pcs
 - 4). Low Profile Bracket (Optional Accessory)
2. Quick installation guide (This document)



Features

- Maximum bandwidth up to PCIe Gen3 x4 specification.
- Compliant with PCI Express M.2 specification 1.0.
- Supports M.2 modules in format 2280, 2260 2242, and 2230 with Key-M or Key-B+M based on PCI Express communication.
- PCBA layout routing length less than 1.5inch between PCIe and M.2 slot.
- Compliant Full High and Low Profile PCIe bracket (Optional Accessory).
- Plug-n-Play, I/O address and IRQ assigned by BIOS.
- Certified by CE, FCC, VCCI, BSMI, and RoHS approval.
- Driver free under Windows, Linux, or other operation systems.
- Support PCIe #CLK_REQ pin to M.2 slot.

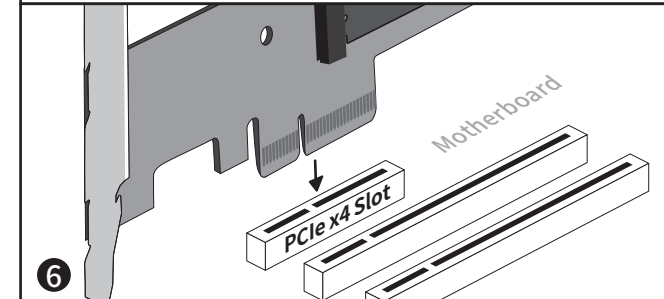
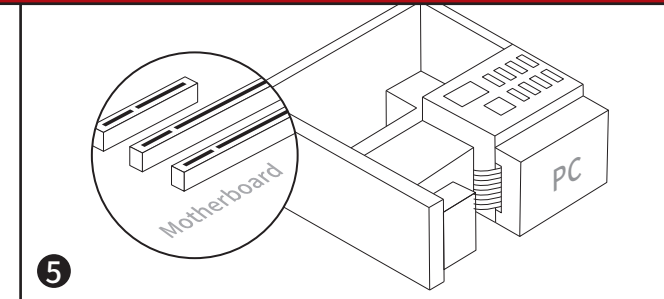
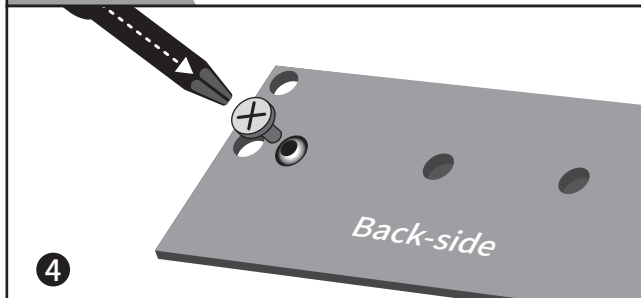
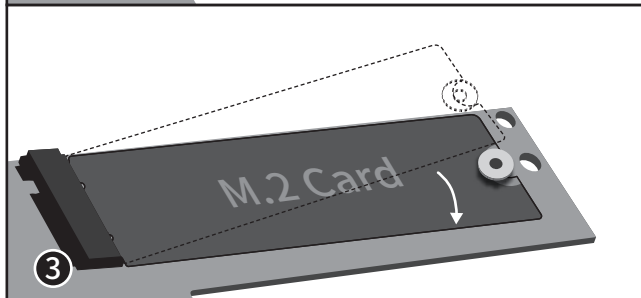
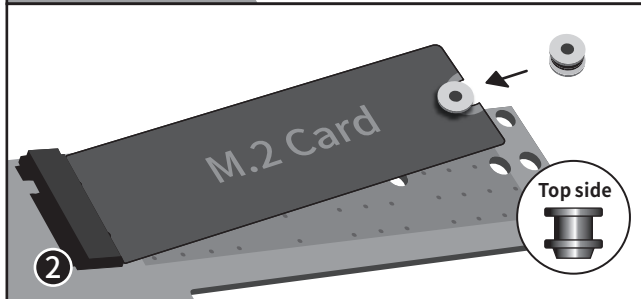
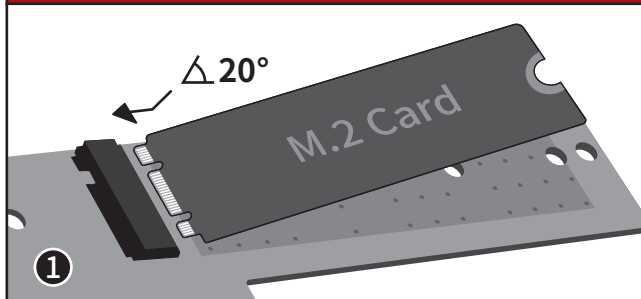
Note: SUNIX P2M04M01 card is NOT compatible with a M.2 SATASSD with Key-B, nor M.2 SATA SSD with Key-B+M module.

Specification

Model	P2M04M01
Description	PCIe x4 to NVMe M.2 Key-M Card
M.2 Interface	1 x 67 pin M.2 Key-M slot
PCIe Interface	PCI Express x4 Ve3.0
Regulatory Approvals	EUR: CE, EN55032 Class B, EN55035 TAIWAN: BSMI: CNS13438 US: FCC Part 15 Class B JAPAN: VCCI
Green Environment	RoHS, CRoHS, WEEE
Operation Temperature	0 °C ~ 40 °C (32-104°F)
Operation Humidity	< 85% non-condensing
Storage Temperature	-10 °C ~ 85 °C (14~176°F)
Weight	40g
Dimension	156.1(L)x40.8(W)x1.6(H)mm

Hardware Installation

Safety First To avoid damaging your system and boards, make sure your PC's power is turned off before installing add-on card.



Copyright - Copyright© 2020 SUNIX Co., Ltd. All Rights Reserved. No part of this publication may be reproduced, transcribed, stored in a retrieval system, translated into any language, or transmitted in any form or by any means, photocopying, manual, or otherwise, without prior written permission from SUNIX Co., Ltd. Disclaimer - SUNIX Co., Ltd. Shall not be liable for any incidental or consequential damages resulting from the performance or use of this equipment. SUNIX Co., Ltd. makes no representations or warranties regarding the contents of this manual. Information in this manual has been carefully checked for reliability; however, no guarantee is given as to the correctness of this content. In the interest of continued product improvement, this company reserves the right to revise the manual or include change in the specifications of the product described within it at any time without notice and without obligation to notify any person of such revision or changes. The information contained in this manual is provided for general use by the customers. Trademarks - SUNIX is a registered trademark of SUNIX Co., Ltd. Other registered marks used herein are for identification purposes only and may be trademarks of their respective owners. BSMI 聲明 - 限用物質含有情況標示資訊網站請參考下列網址: <https://www.sunix.com.tw> 操作說明: 選擇頁面之產品/型號/文件下載區(RoHS文件)。

E-mail for technical support: info@sunix.com
Website for product information: www.sunix.com
Tel: +886-2-8913-1987
Fax: +886-2-8913-1986

Made in China
771-QP2M00001-S01

