

SUNIX | PCIe Gen3 drive Quad Adapter Card

Quick Installation Guide

Ver.1

Please visit <https://www.sunix.com> with product model for detail and latest manual update

Introduction

SUNIX P2M16M40 PCI Express x16 card expands four M.2 modules (Key-M) into desktop or server PC, allowing user accesses new generation NVMe Express interface (Non-Volatile Memory Host Controller Interface Specification) to capitalize on the low latency and internal parallelism of solid-state storage devices. It supports up to four M.2 NVMe SSD storage modules in 2280, 2260, or 2242 format with driver free feature. To maximum the highest performance of M.2 NVMe SSD, this card ensures the PCB layout routing length less than 1.5inch between PCIe Express and M.2 slot. It is the best M.2 quad NVMe SSD adapter card solution for desktop, server, gaming, or industrial applications.

Features

- Maximum bandwidth up to PCIe Gen3 x16 specification.
- Compliant with PCI Express M.2 specification 1.0.
- Supports M.2 modules in format 2280, 2260 and 2242 with Key-M or Key-B+M based on PCIe communication.
- PCBA layout routing length less than 1.5inch between PCIe and M.2 slot.
- Compliant Full High Profile PCIe bracket.
- Plug-n-Play, I/O address and IRQ assigned by BIOS.
- Certified by CE, FCC, VCCI, BSMI, and RoHS approval.
- Driver free under Windows, Linux, or other operation systems.
- Support PCIe #CLK_REQ pin to M.2 slot.

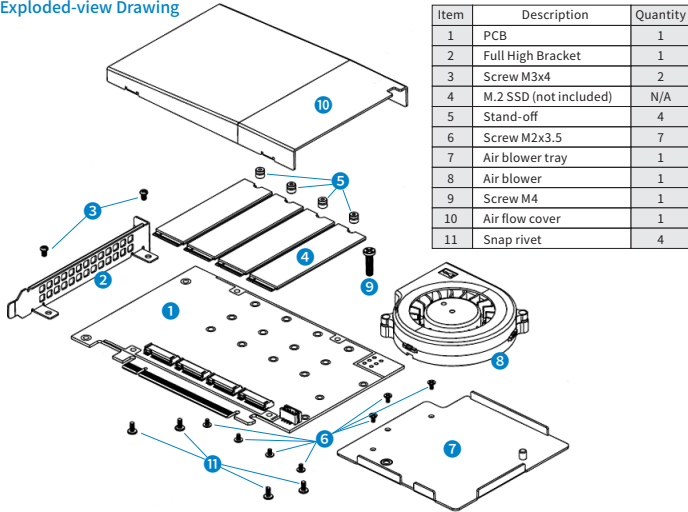
Note:

- SUNIX P2M16M40 card is **neither** compatible **M.2 SATA SSD Key B**, nor **M.2 SATA SSD Key B+M**.
- Motherboard should be compatible **PCIe Bifurcation** and BIOS should also have an option to enable PCIe Bifurcation **x4x4x4x4**.
- P2M16M40 this card is installed on system which has PCIe Gen3 x16 slot.
- When it installs 4 SSD of PCIe Gen3x4 and no limited SSD capacities and system BIOS supports PCIe Bifurcation **x4x4x4x4**.
- When this card runs above condition within the operation temperature 0~40°C, it is defined as full load.

Specifications

Description	PCIe Gen3 drive Quad Adapter Card		
Model	P2M16M40	Operation Temp.	0 °C ~ 40 °C (32~104°F)
M.2 Interface	M.2 Key-M slot x4	Operation Humidity	< 85% non-condensing
PCIe Interface	PCI Express x16 Gen3	Storage Temp.	-10 °C ~ 85 °C (14~176°F)
Green Environment	RoHS, CRoHS, WEEE	Weight	250g
Regulatory Approvals	FCC, CE, BSMI, VCCI	Mechanical	260(L)x104.85(W)x58.97(H)mm

Exploded-view Drawing



Package

Please check if the following items are present and in good condition upon opening your package.

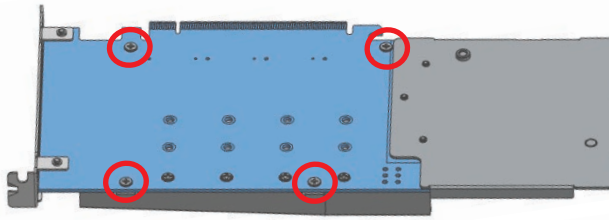
Contact your vendor if any item is damaged or missing.

- P2M16M40 / PCIe Gen3 drive Quad Adapter Card x1
- Thermal pads (2.8mm/PN: 695-E000000579) x4 (for single side SSD)
- Thermal pads (1.8mm/PN: 695-E000000580) x4 (for double side SSD)
- Metal screw standoff (M2*4.8mm) x5 (for fixing SSD)
- Metal screw cross recess (I2*3.5MM) x5 (for fixing SSD standoff)
- Quick Installation Guide (This document)

Copyright - Copyright© 2022 SUNIX Co., Ltd. All Rights Reserved. No part of this publication may be reproduced, transcribed, stored in a retrieval system, translated into any language, or transmitted in any form or by any means, photocopying, manual, or otherwise, without prior written permission from SUNIX. Disclaimer - SUNIX shall not be liable for any incidental or consequential damages resulting from the performance or use of this equipment. SUNIX makes no representations or warranties regarding the contents of this manual. Information in this manual has been carefully checked for reliability; however, no guarantee is given as to the correctness of this content. In the interest of continued product improvement, this company reserves the right to revise the manual or include change in the specifications of the product described within it at any time without notice and without obligation to notify any person of such revision or changes. The information contained in this manual is provided for general use by the customers. Trademarks - SUNIX is a registered trademark of SUNIX Group. All other trademarks or registered marks in this manual belong to their respective owners. BSMI 聲明 - 限用物質含有情況標示資訊網站請參考下列網址: <http://www.sunix.com.tw> 操作說明: 選擇頁面之產品/型號/文件下載區(RoHS文件)

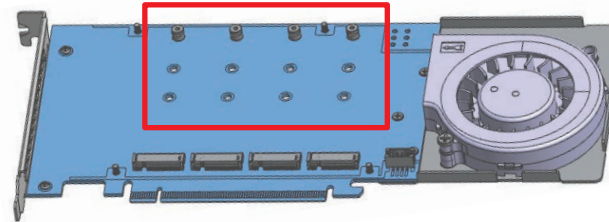
SSD Installation

1. Remove Air Flow Cover - Flip to the back, release the snap rivet of the Adapter

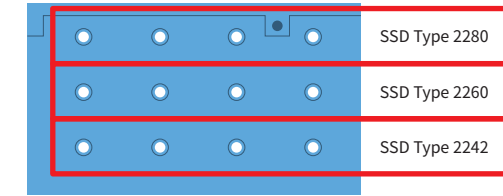


Air Flow Cover

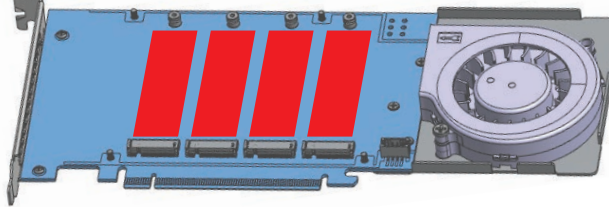
2. Placing Stand-off - Move the Stand-off to appropriate location (depends on your SSD)



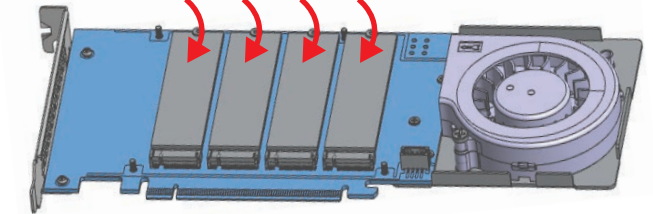
M.2 Module Support



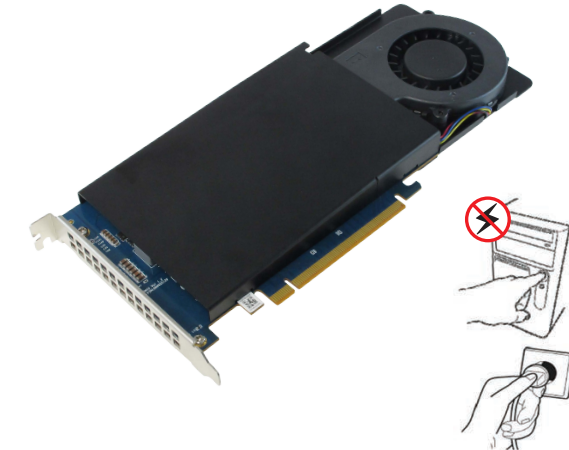
3. Placing Thermal Pad - Stick the Thermal Pad on the PCB (trim the thermal pad by the size of your SSD)



4. Install your SSD - Place the SSDs into the M.2 slots orderly



5. Placing Air Flow Cover - Put back Air Flow Cover, and secure it to the PCB by the snap rivet

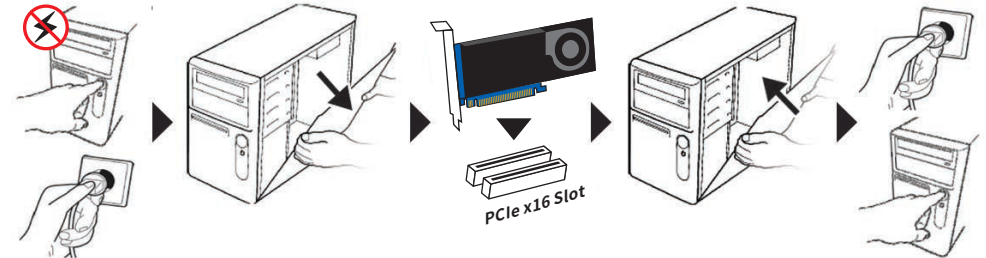


PCI Express Installation

- Step 1:** Turn your PC's power off, and shut off the power to any peripheral.
- Step 2:** Remove the power plug from the plug socket.
- Step 3:** Remove the cover from the computer case.
- Step 4:** If fitted, Remove the metal cover plate on the rear of a free PCIe slot.
- Step 5:** Insert PCI Express Industrial I/O Control Board into the free PCIe slot and screw it firmly on the bracket side.
- Step 6:** Place the cover back onto the computer.
- Step 7:** Insert the plug into the plug socket.

SAFETY FIRST

To avoid damages, please make sure to remove any power connection before card installation, and follow the detailed steps given below before inserting the card into your computer. Do NOT Touch when the FAN is rotating.



E-mail for technical support: info@sunix.com
Website for product information: www.sunix.com
Tel: +886-2-8913-1987
Fax: +886-2-8913-1986 771-QP2M16M41-S04



SUNIX | PCIe 轉 4 埠 M.2 (NVMe)SSD轉接卡

快速安裝指南

Ver.1

請前往 <https://www.sunix.com> 並使用產品型號搜尋更多資訊與最新的使用手冊

介紹

SUNIX P2M16M40 PCI Express x16 為一款適用桌上型電腦、伺服器擴充 M.2 模組 (Key-M) SSD 固態硬碟擴充的最佳擴充卡方案，讓用戶可充分發揮新世代 NVM Express 面 (Non-Volatile Memory Host Controller Interface Specification) 的優點，進而利用低延遲與固態儲存裝置其中的平行處理優勢。P2M16M40 最高可擴充至四埠 2280, 2260, 或 2242 規格尺寸的 M.2 NVMe SSD 儲存裝置，且無須驅動程式。為了追求 NVMe SSD 固態硬碟於電腦內傳輸效能極大化，SUNIX P2M16M40 線路佈局設計符合每一 PCI Express 信號傳輸路徑必須小於 1.5 英寸的最短路徑設計要求。此擴展具效能與穩固的四埠 M.2 擴充卡，特別適用於桌上型電腦、伺服器、電競電腦、工業電腦等應用場景。

特性

- 可達 PCIe Gen3 x16 規範最高傳輸頻寬。
- 相容於 PCI Express M.2 規範 1.0 版本。
- 支援 2280, 2260, 2242 三種規格尺寸的 M.2 擴充模組，符合 PCI Express 通訊標準。
- 符合每一 PCI Express 信號傳輸路徑必須小於 1.5 英寸的最短路徑要求。
- 相容標準機箱 PCIe 檔板配件選擇。
- 擴充卡即插即用，BIOS 自動指派 I/O 位址與 IRQ。
- 取得歐盟 CE、美加 FCC、日本 VCCI 與臺灣 BSMI 安規認證確保安全質量。
- Windows, Linux, 或其他作業系統免驅動程式。
- 支援 PCIe #CLK_REQ 引腳連接到 M.2 插槽。

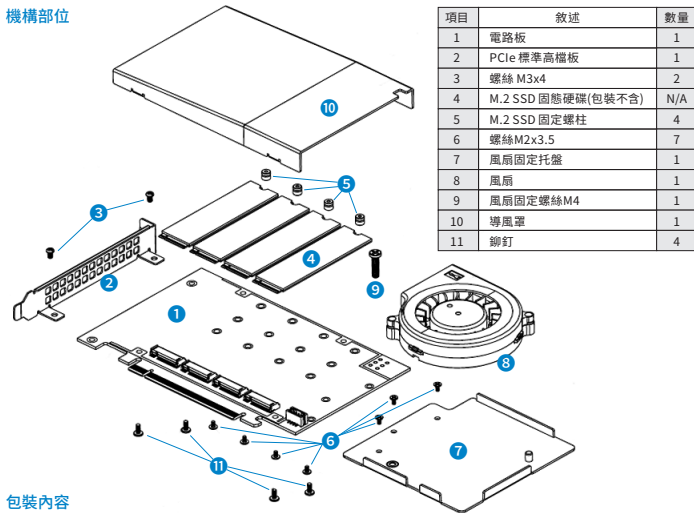
備註：

- SUNIX P2M16M40 擴充卡不支援透過 SATA (Serial-ATA) 介面傳輸的 M.2 快閃記憶體的儲存模組，包括 M.2 SATA SSD Key B，與 M.2 SATA SSD Key B+M。
- 主機板需相容 PCIe 信號折分，且 BIOS 亦須具有啟用 PCIe Bifurcation x4x4x4x4 的選項。
- P2M16M40 此卡安裝在具有 PCIe Gen3 x16 插槽的系統上。
- 當它安裝 4 個 PCIe Gen3x4 SSD 並且沒有限制 SSD 容量和系統 BIOS 支持 PCIe Bifurcation x4x4x4x4。
- 本卡在工作溫度 0~40°C 以上條件下運行時，定義為滿載。

規格

產品敘述	PCIe 轉 4 埠 M.2 (NVMe)SSD轉接卡		
產品型號	P2M16M40	工作溫度	0 °C ~ 40 °C (32-104°F)
M.2 介面	M.2 Key-M 插槽 x4	工作濕度	< 85% non-condensing
PCIe 介面	PCI Express x16 Gen3	儲存溫度	-10 °C ~ 85 °C (14~-176°F)
綠色環保	RoHS, CrRoHS, WEEE	重量	250g
安規認證	FCC, CE, BSMI, VCCI	尺寸	260(L)x104.85(W)x58.97(H)mm

機構部位



包裝內容

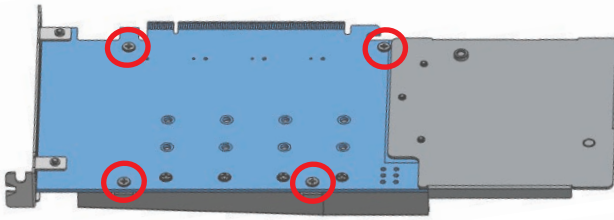
請在打開包裝時檢查以下物品是否存在且狀況良好。若有任何物品損壞或丟失，請聯繫您的供應商。

- P2M16M40 / PCIe 轉 4 埠 M.2 (NVMe)SSD轉接卡 x1
- 散熱片 (2.8mm/PN: 695-E000000579) x4 (適用於單面尺寸之SSD)
- 散熱片 (1.8mm/PN: 695-E000000580) x4 (適用於雙面尺寸之SSD)
- M.2 SSD 固定螺柱 (M2*4.8mm) x5 (用於固定 SSD)
- 風扇固定螺絲 (I2*3.5MM) x5 (用於固定 SSD 固定螺柱)
- 快速安裝指南 (此份文件)

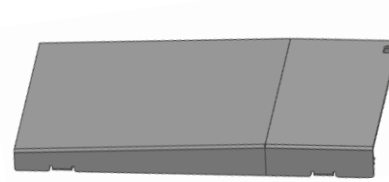
Copyright: Copyright© 2022 SUNIX Co., Ltd. All Rights Reserved. No part of this publication may be reproduced, transcribed, stored in a retrieval system, translated into any language, or transmitted in any form or by any means, photocopying, manual, or otherwise, without prior written permission from SUNIX. Disclaimer - SUNIX shall not be liable for any incidental or consequential damages resulting from the performance or use of this equipment. SUNIX makes no representations or warranties regarding the contents of this manual. Information in this manual has been carefully checked for reliability; however, no guarantee is given as to the correctness of this content. In the interest of continued product improvement, this company reserves the right to revise the manual or include change in the specifications of the product described within it at any time without notice and without obligation to notify any person of such revision or changes. The information contained in this manual is provided for general use by the customers. Trademarks - SUNIX is a registered trademark of SUNIX Group. All other trademarks or registered marks in this manual belong to their respective owners. BSMI 聲明 - 限用物質含有情況標示資訊網站請參考下列網址: <http://www.sunix.com.tw> 操作說明: 選擇頁面之產品/型號/文件下載區(RoHS文件)

SSD組裝說明

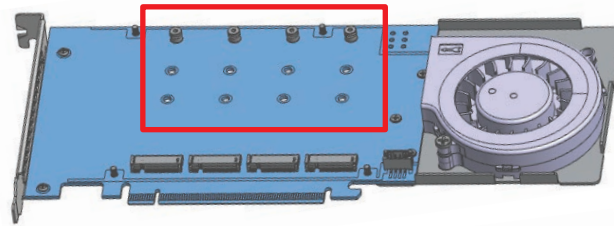
- 取下導風罩 - 翻至背面，取下導風罩螺絲，將導風罩放取下



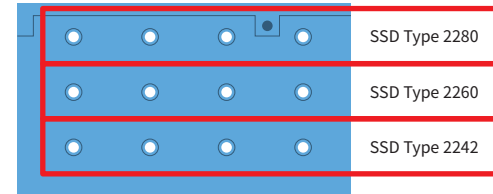
導風罩



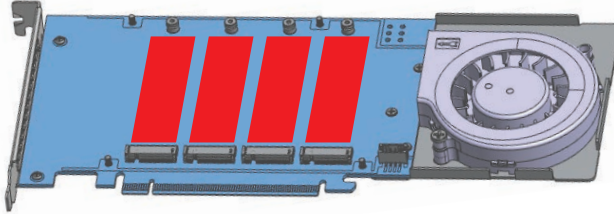
- 安裝固定螺柱 - 將SSD固定螺柱安裝於PCB適當位置上(位置依照您的SSD之規格而定)



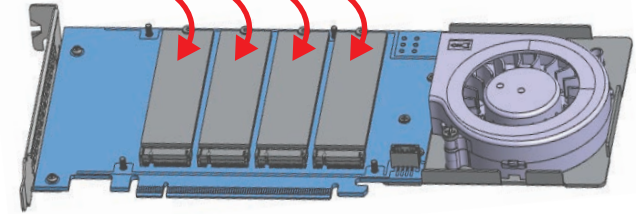
SSD規格與螺柱位置說明



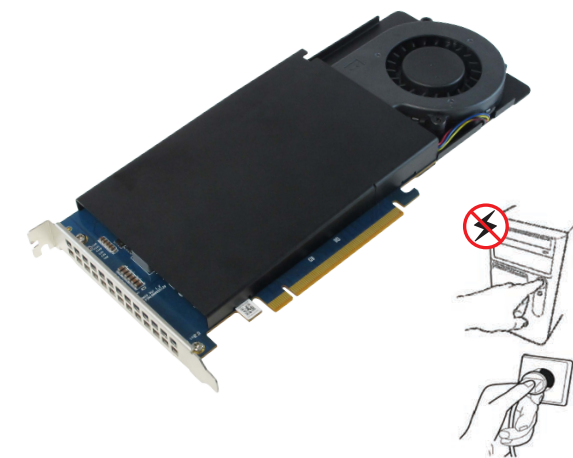
- 黏貼散熱片 - 將散熱片貼於PCB上方(散熱片可依照SSD尺寸自行剪裁)



- 安裝SSD卡 - 將SSD依序安裝於M.2插槽中



- 安裝導風罩 - 放置導風罩並將PCB背面之導風罩螺絲鎖上，即完成組裝



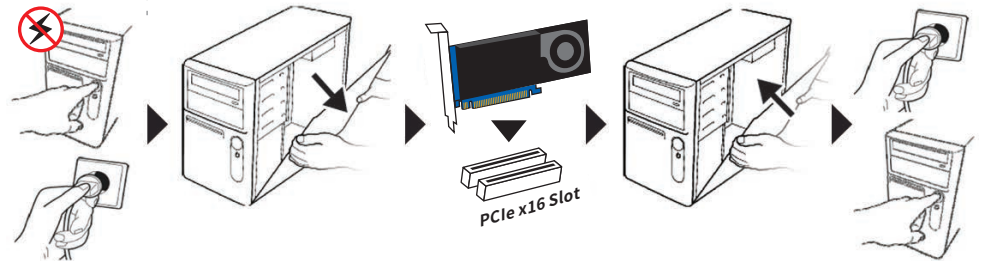
PCI Express 安裝步驟

- 步驟 1: 將您的PC開機並關閉所有周邊裝置的電源
- 步驟 2: 將插頭由電源插座移除
- 步驟 3: 卸下電腦主機外殼
- 步驟 4: 若尺寸相符，請移除電腦後方開置的PCIe插槽鐵片
- 步驟 5: 將本PCIe卡插入開置的PCIe插槽，並將後方鐵片鎖緊
- 步驟 6: 裝回電腦主機外殼
- 步驟 7: 將插頭插入電源插座



安全第一

為了避免產生觸電危險，以及損害電腦設備，請務必
先行關閉電腦並拔除電源線之後才可以進行擴充卡
的安裝步驟。請勿觸碰旋轉中的風扇！



E-mail for technical support: info@sunix.com
Website for product information: www.sunix.com
Tel: +886-2-8913-1987
Fax: +886-2-8913-1986 771-QP2M16M41-S04

