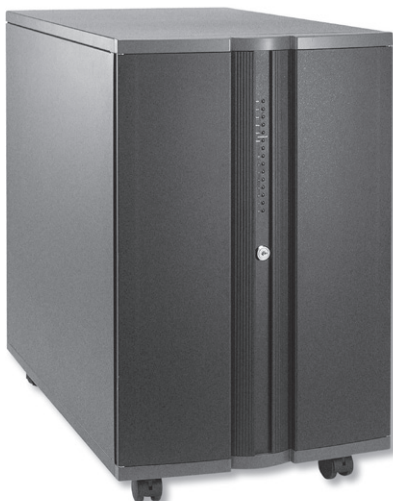


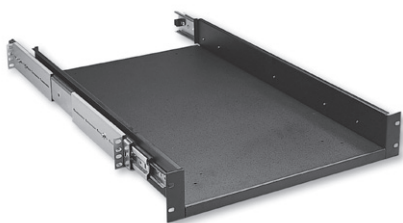
GHS-2000

Server Case



Specifications

- **Server / RAID case or 19" Rack Mounted**
- **Construction:** Heavy Duty Cold Rolled Electroplated Steel
- **Color:** Black or Custom Design
- **Support EATX M/B(Max. to 16"x13")**
- **Support 20-slot Passive Backplane**
- **Drive Capacity:** 23x 5.25"CD-ROM
- **Power Supply(Optional):** PS/2 Size Single up to 700W or Redundant 300~600W P/S or Triple Redundant 800+400W P/S
- **Cooling:** 8x (90mm = 51CFM ea.) Fans & 2x (120mm = 108CFM ea.) Fans
- **Indicators:** LEDs for Power ON/OFF, HDD Activity, Fan, Temperature
- **Switch:** Power ON/OFF, System Reset, Buzzer Reset
- **Thermal Management Card Installed**
- **Lockable Security Access and Lockable Casters**
- **Dimensions(WxHxD):** 410 x 600 x 710mm(16.2" x 23.6" x 28")
- **Cuft:** 12.2
- **GW:** 44 kgs / 97 lbs
- **Carton Size(cm):** 54.8 x 73.6 x 85.7(21.6" x 29" x 33.7")



GHA-1520

GHS-1500,GHS-2000 Rackmount Tray (Optional)