



NEW PRODUCT SPEC SHEET

Model Number: K6

- Supports Intel® 6th. Generation Core™ i3 / i5 / i7 Desktop Processors, Socket LGA1151
Previous Generations Core™ i3 / i5 / i7 Desktop Processors, Socket LGA1155 & 1156
- An Active Cooler Recommended for 1U Chassis & up

Overall Specification:

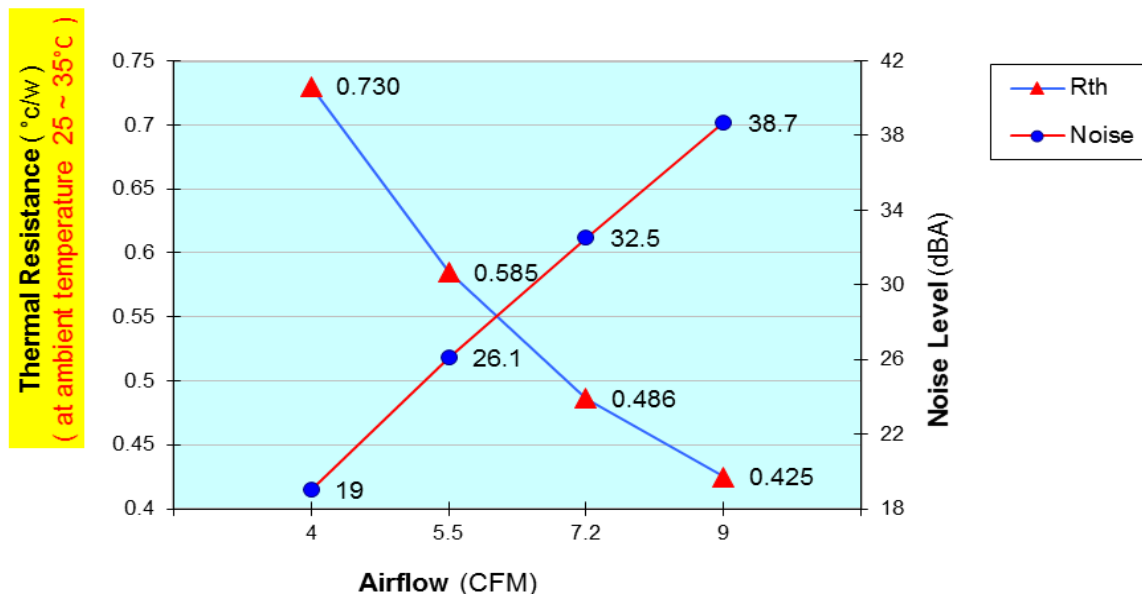
- Dimension: 83 x 81x 27.8 mm
- Weight: 200g ± 5g
- Material: Aluminum 6061 Skived Fins Heat Sink
- Plastic Frame 8015 Blower with PWM Function
- Screw Fastener Captive Mounting
- Motherboard Interference-Free Mounting Back Strips Included
- Pre-Printed Shin Etsu 7762 Thermal Grease
- Support CPU Power up to 55 Watts

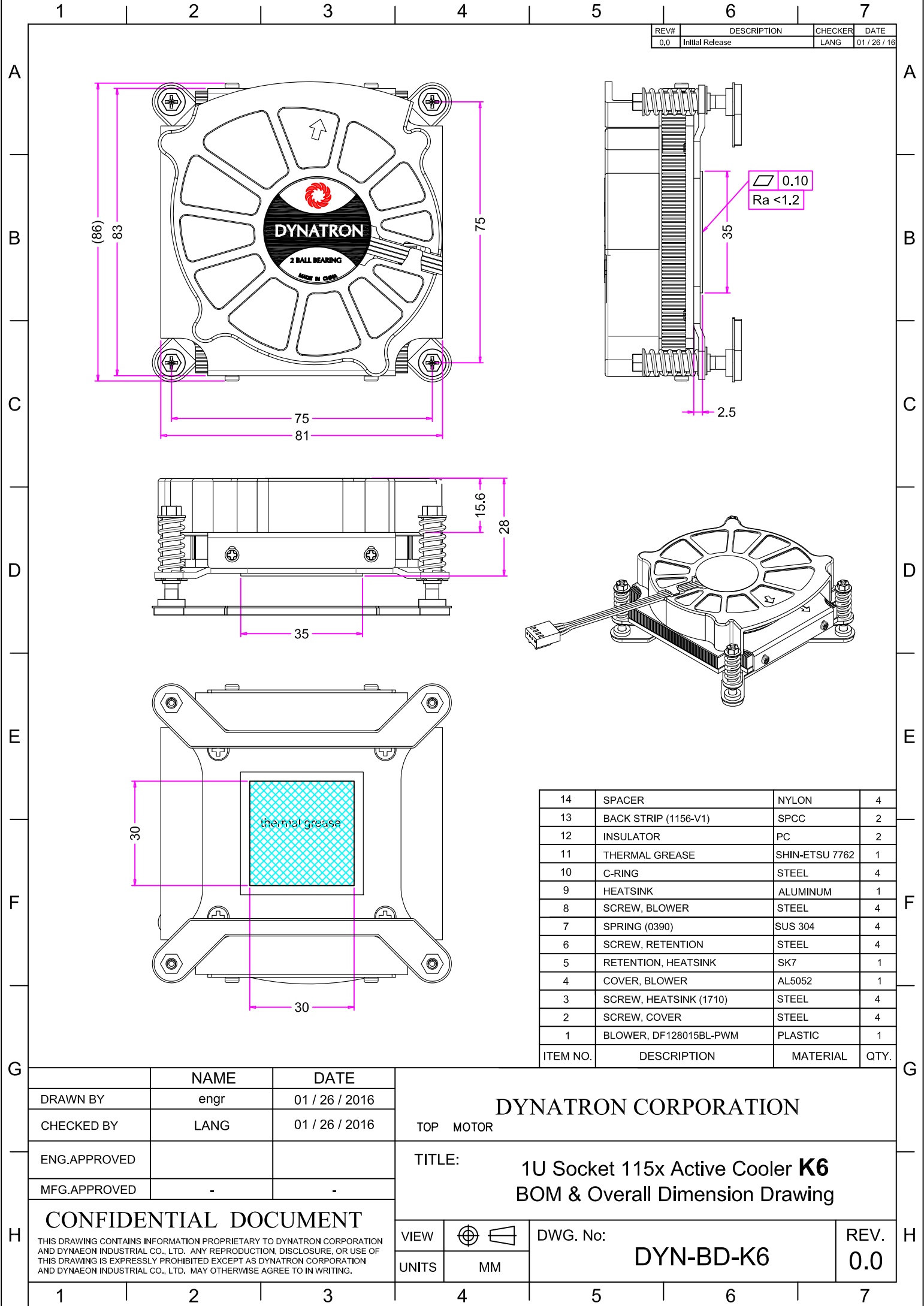
Blower Specification:

- Model Number DB128015BL-PWM (PPS)
- Dimension: ø80 x 15 mm
- Bearing: Ball
- Rated Voltage: 12V
- Rated Speed:
 - At Duty Cycle 0~20%: 1200 ± 150RPM
 - At Duty Cycle 50%: 1700 ± 10% RPM
 - At Duty Cycle 100%: 3000 ± 10% RPM

- Power Consumed :
 - At Duty Cycle 0~20%: 0.96 W
 - At Duty Cycle 50%: 1.20 W
 - At Duty Cycle 100%: 5.04 W
- Maximum Airflow :
 - At Duty Cycle 0~20%: 3.6 CFM
 - At Duty Cycle 50%: 5.1 CFM
 - At Duty Cycle 100%: 9.0 CFM
- Static Air Pressure :
 - At Duty Cycle 0~20%: 0.083 inch-H2O
 - At Duty Cycle 50%: 0.167 inch-H2O
 - At Duty Cycle 100%: 0.52 inch-H2O
- Acoustical Level :
 - At Duty Cycle 0~20%: 18.8 dBA
 - At Duty Cycle 50%: 26.3 dBA
 - At Duty Cycle 100%: 38.7 dBA
- Lead Wire Pin Out:
 - Pin#1-Black(-)
 - Pin#2- Yellow(+)
 - Pin#3- Green(Tachometer/ Signal Output)
 - Pin#4- Blue (PWM)

Model K6 Performance Chart





REV#	DESCRIPTION	CHECKER	DATE
0,0	Initial Release	LANG	01 / 26 / 16

0.10
Ra <1.2

14	SPACER	NYLON	4
13	BACK STRIP (1156-V1)	SPCC	2
12	INSULATOR	PC	2
11	THERMAL GREASE	SHIN-ETSU 7762	1
10	C-RING	STEEL	4
9	HEATSINK	ALUMINUM	1
8	SCREW, BLOWER	STEEL	4
7	SPRING (0390)	SUS 304	4
6	SCREW, RETENTION	STEEL	4
5	RETENTION, HEATSINK	SK7	1
4	COVER, BLOWER	AL5052	1
3	SCREW, HEATSINK (1710)	STEEL	4
2	SCREW, COVER	STEEL	4
1	BLOWER, DF128015BL-PWM	PLASTIC	1
ITEM NO.	DESCRIPTION	MATERIAL	QTY.

	NAME	DATE
DRAWN BY	enr	01 / 26 / 2016
CHECKED BY	LANG	01 / 26 / 2016
ENG. APPROVED		
MFG. APPROVED	-	-

CONFIDENTIAL DOCUMENT
THIS DRAWING CONTAINS INFORMATION PROPRIETARY TO DYNATRON CORPORATION AND DYNAEON INDUSTRIAL CO., LTD. ANY REPRODUCTION, DISCLOSURE, OR USE OF THIS DRAWING IS EXPRESSLY PROHIBITED EXCEPT AS DYNATRON CORPORATION AND DYNAEON INDUSTRIAL CO., LTD. MAY OTHERWISE AGREE TO IN WRITING.

DYNATRON CORPORATION			
TOP MOTOR			
TITLE: 1U Socket 115x Active Cooler K6 BOM & Overall Dimension Drawing			
VIEW		DWG. No:	REV.
UNITS	MM	DYN-BD-K6	0.0